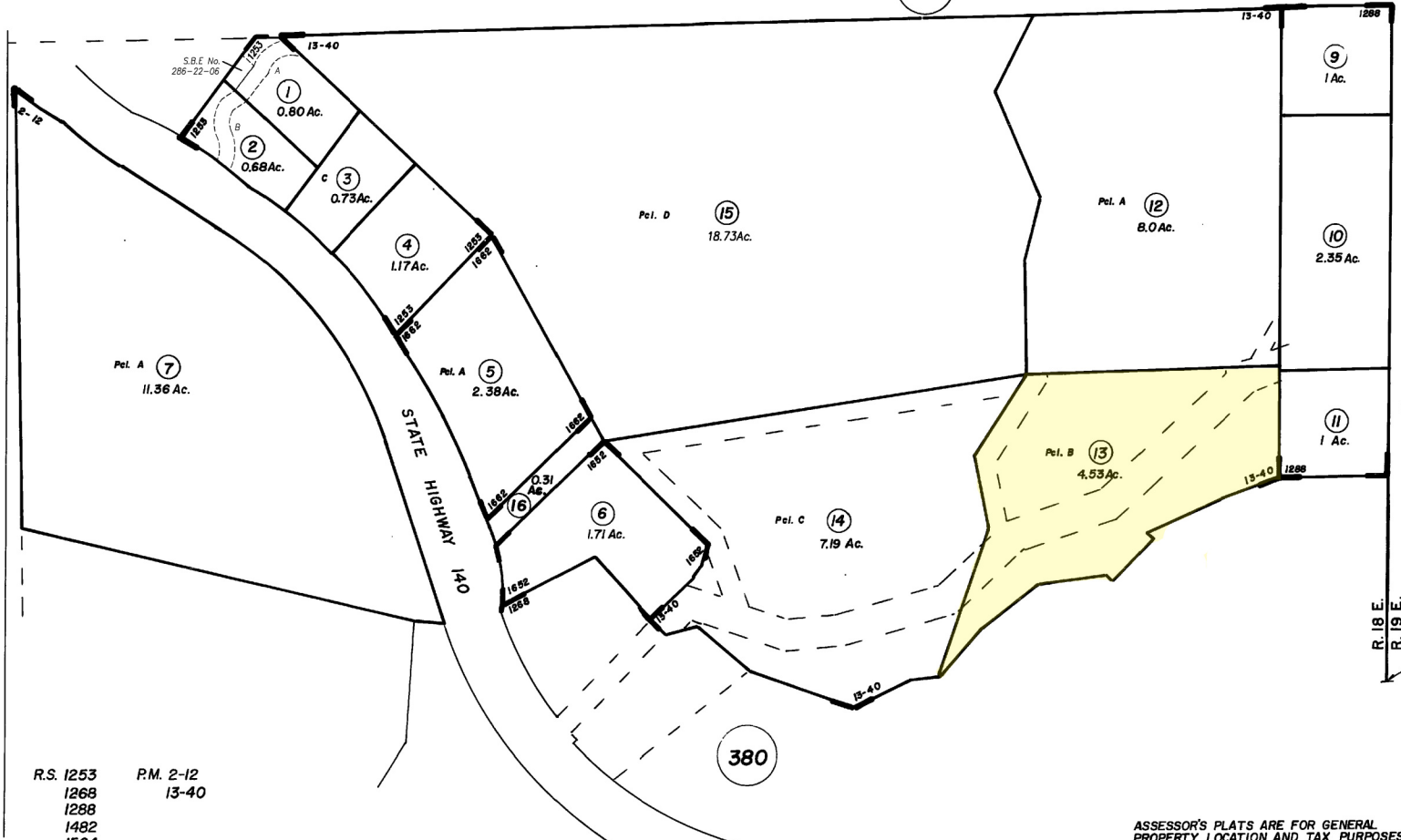


360

410

380



R.S. 1253
1268
1288
1482
1564
1632
1662

P.M. 2-12
13-40

ASSESSOR'S PLATS ARE FOR GENERAL
PROPERTY LOCATION AND TAX PURPOSES
ONLY. THEY MAY NOT BE USED AS A BASIS
FOR LEGAL PROPERTY DESCRIPTIONS.

Assessor's Map Bk.08 - Pg.370

County of Mariposa, Calif.
2022

NOTE-Assessor's Parcel Numbers Shown in Small Circles.