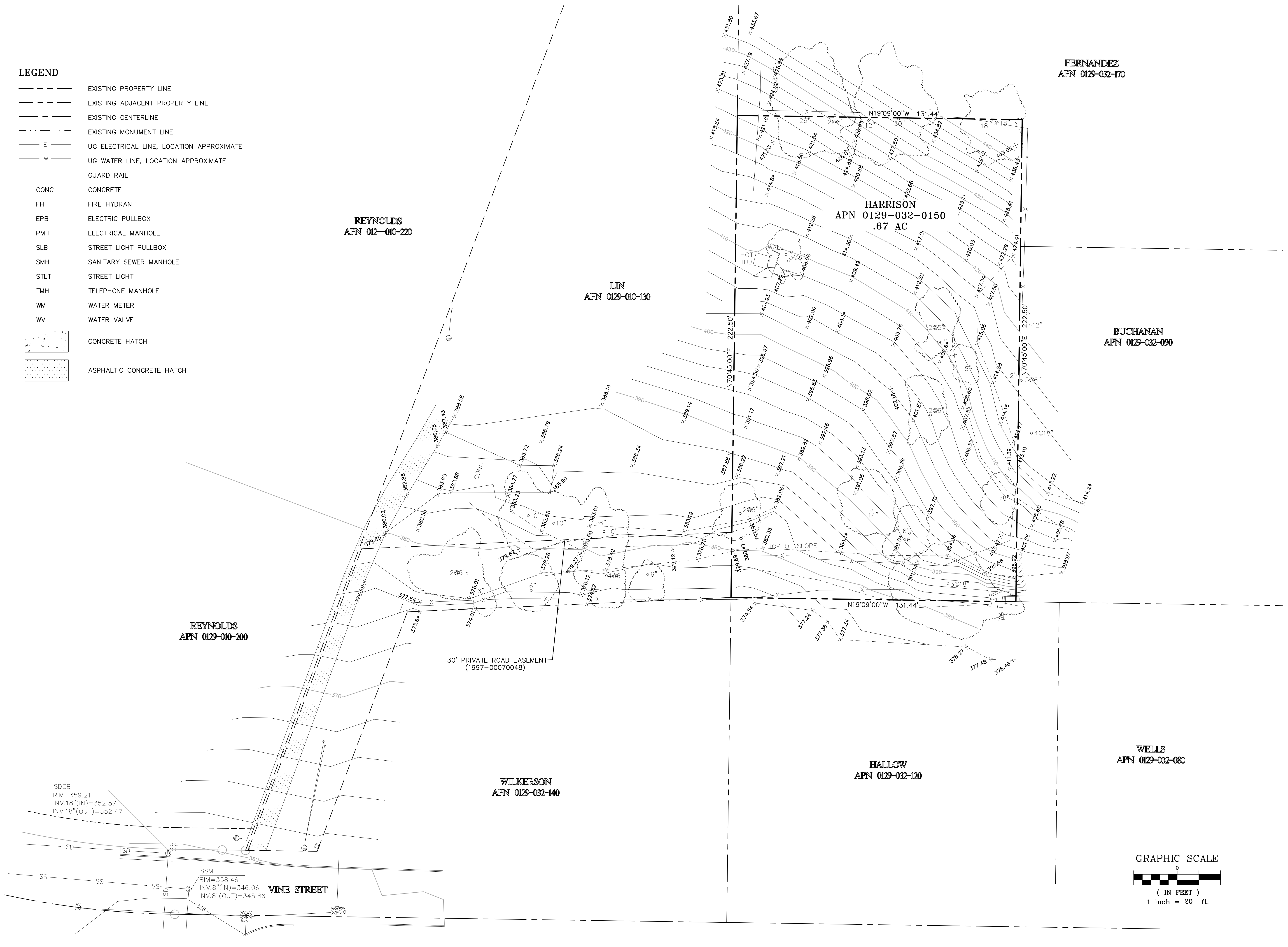


LEGEND

- EXISTING PROPERTY LINE
- EXISTING ADJACENT PROPERTY LINE
- EXISTING CENTERLINE
- EXISTING MONUMENT LINE
- E UG ELECTRICAL LINE, LOCATION APPROXIMATE
- W UG WATER LINE, LOCATION APPROXIMATE
- GUARD RAIL
- CONC CONCRETE
- FH FIRE HYDRANT
- EPB ELECTRIC PULLBOX
- PMH ELECTRICAL MANHOLE
- SLB STREET LIGHT PULLBOX
- SMH SANITARY SEWER MANHOLE
- STLT STREET LIGHT
- TMH TELEPHONE MANHOLE
- WM WATER METER
- WV WATER VALVE
- [CONCRETE HATCH] CONCRETE HATCH
- [ASPHALTIC CONCRETE HATCH] ASPHALTIC CONCRETE HATCH



SDCB
RIM= 359.21
INV.18"(IN)= 352.57
INV.18"(OUT)= 352.47

SSMH
RIM= 358.46
INV.8"(IN)= 346.06
INV.8"(OUT)= 345.86

VINE STREET

30' PRIVATE ROAD EASEMENT
(1997-00070048)

REYNOLDS
APN 012-010-220

LIN
APN 0129-010-130

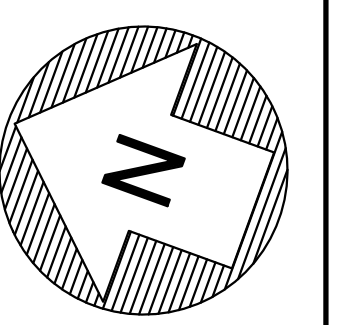
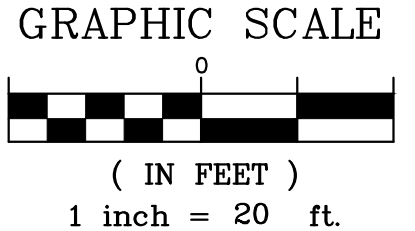
HARRISON
APN 0129-032-0150
.67 AC

FERNANDEZ
APN 0129-032-170

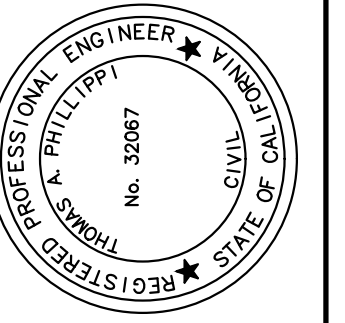
BUCHANAN
APN 0129-032-090

HALLOW
APN 0129-032-120

WELLS
APN 0129-032-080



SCALE:
1" = 20'



PHILLIP ENGINEERING
PHILLIP ENGINEERING, INC.
1000 BROADWAY
VACAVILLE, CA 94988
P.O. BOX 6556
OFFICE (707) 451-6556
FAX (707) 451-6555

PEI
DESIGNED BY: ST
DRAWN BY: CDL
CHECKED BY: ST

HARRISON PROPERTY
CALIFORNIA
VACAVILLE
DRAWING TITLE:
BOUNDARY / TOPOGRAPHIC SURVEY

REVISIONS:	NO.	DATE	DESCRIPTION

DRAWING FILE:
20180810T
ISSUE DATE:
01/10/2020
PROJECT NO.:
20180810
SHEET NO.:
1
OF 1