
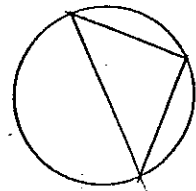


NO SCALE


 TEST PIT LOCATION

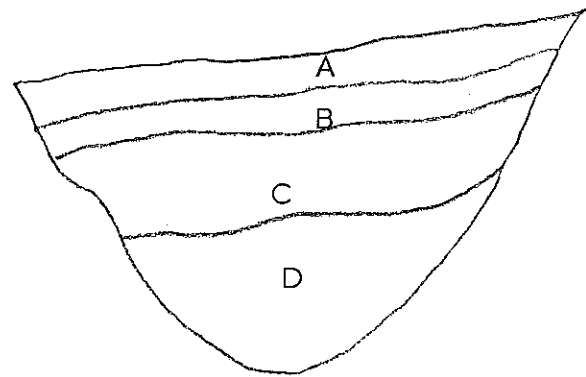


GIBLIN ASSOCIATES CONSULTING GEOTECHNICAL ENGINEERS		
Job No. 518.1	Appr: <i>[Signature]</i>	Date 1-29-87

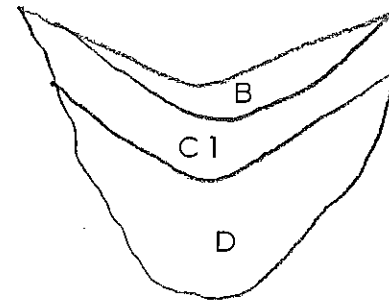
TEST PIT LOCATION SKETCH
 Wikiup Estates Lot 12
 Sonoma County, California

PLATE
1

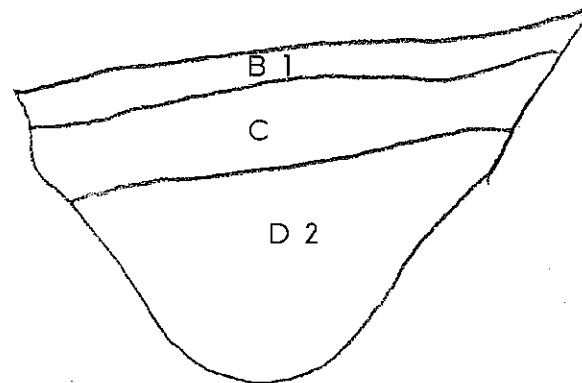
TEST PIT No. 1



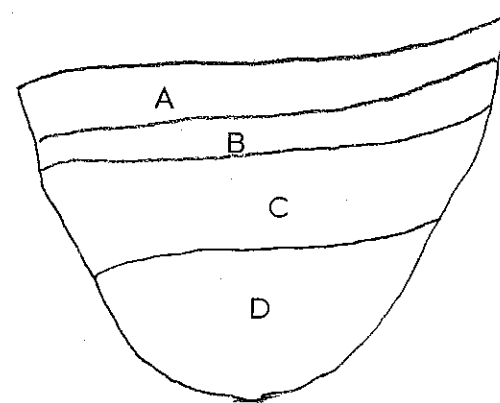
TEST PIT No. 2



TEST PIT No. 3



TEST PIT No. 4



KEY

- A = BROWN SANDY CLAY (CL)
soft to medium stiff, wet (fill)
- B = DARK BROWN SANDY CLAY (CL)
medium stiff, wet, with root fibers
- C = LIGHT BROWN SANDY CLAY (CH)
medium stiff, wet
- D = LIGHT BROWN CLAYSTONE
friable, plastic, highly weathered
bedrock of the Glen Ellen or
Petaluma formation
(decomposed to consistency of very
stiff clayey soil)
- 1 = large roots
- 2 = zones of Red-Brown Sandy Clay (SC)

scale: 1 inch = 5 feet, horizontal and vertical

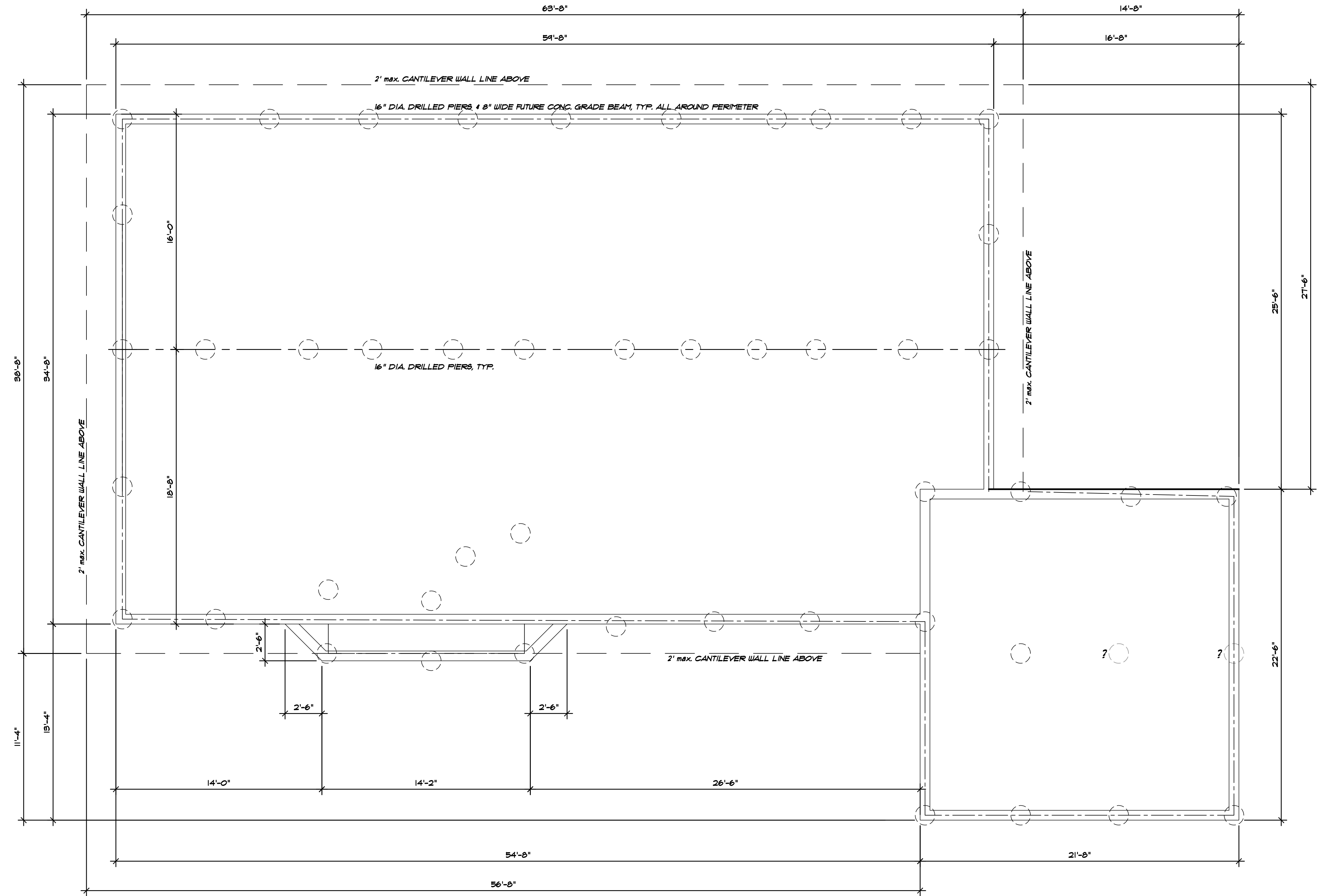
GIBLIN
ASSOCIATES
CONSULTING
GEOTECHNICAL
ENGINEERS

Job No. 518.1 Appr: *[Signature]* Date 1-29-87

LOG OF TEST PITS 1 through 4

Wikiup Estates Lot 12
Sonoma County, California

PLATE
2



FLOOR PLAN - EXISTING DRILLED PIERS
 SCALE: 1/4" = 1' - 0"