

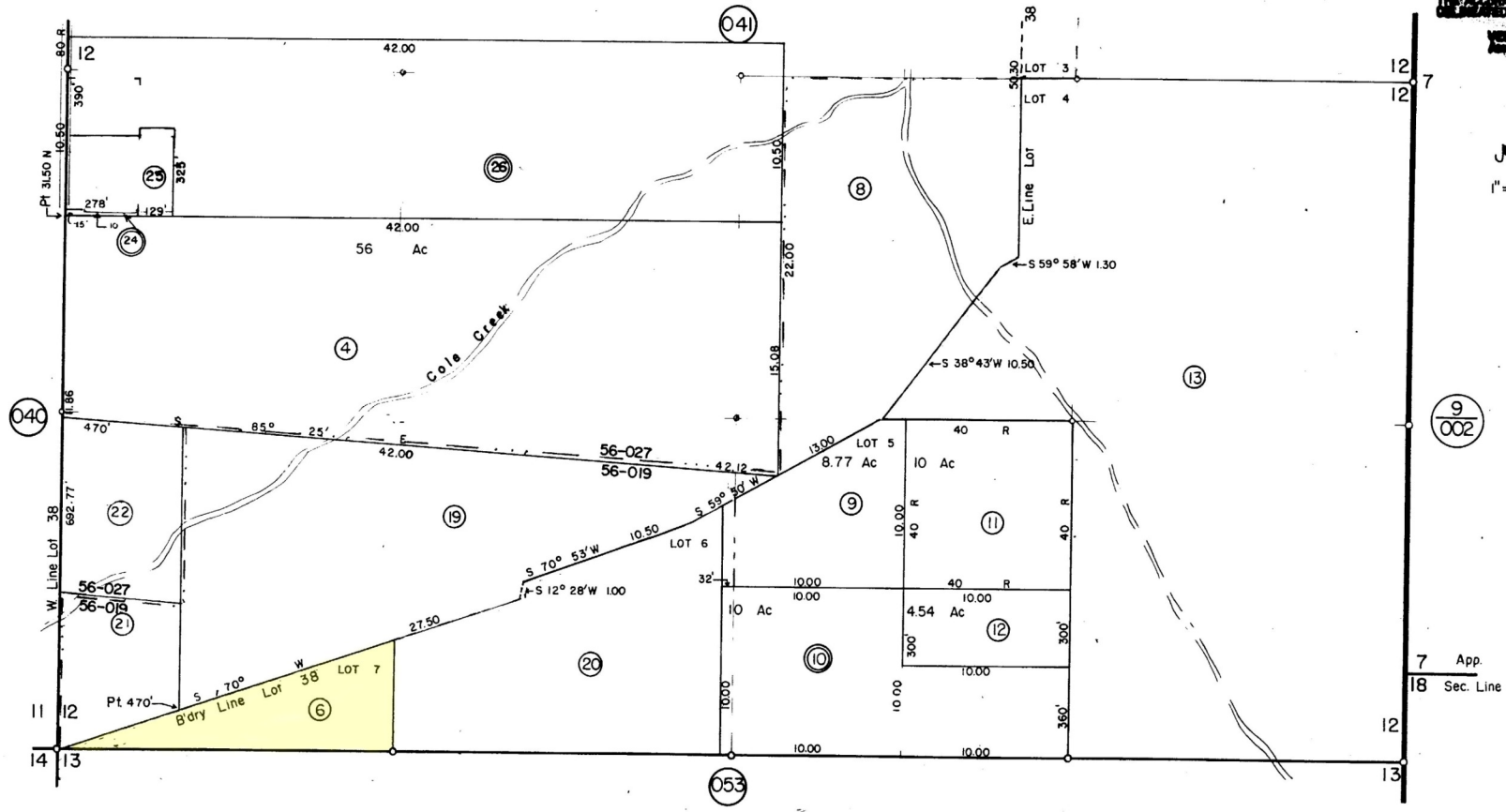
S 1/2 Sec. 12 T13 N R9 W

T.R.A.  
56-019  
56-027

8-042

THIS MAP WAS PREPARED FOR  
ASSESSMENT PURPOSES ONLY  
NO WARRANTY IS MADE FOR  
THE ACCURACY OF THE DATA  
OR THE FIELD RECORD.

VERNON L. STROUD  
Assessor, Lake County



7 App.  
18 Sec. Line