

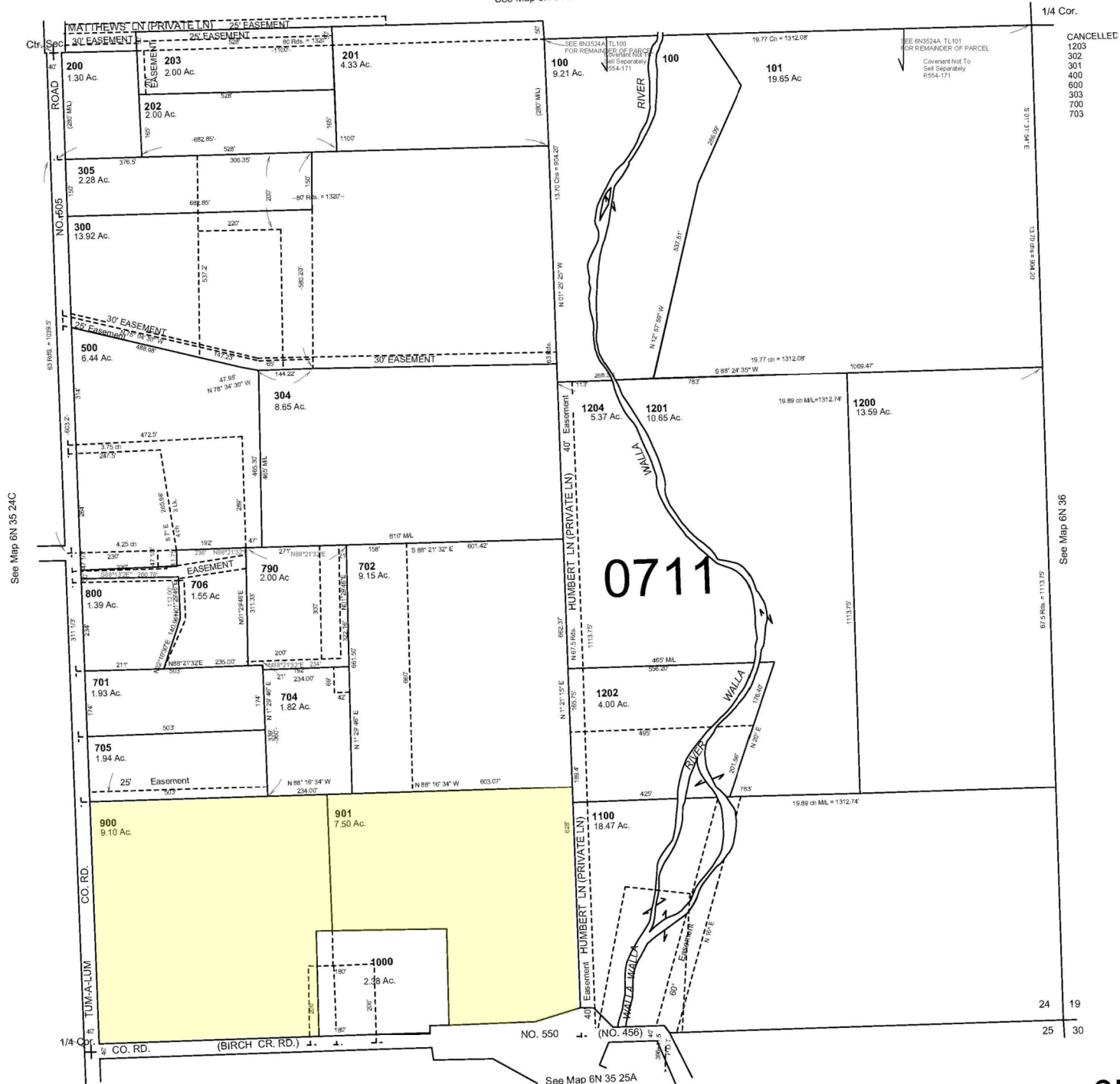
This map was prepared for Assessment & Taxation purposes only and was NOT prepared nor is it suitable for legal, engineering or survey purposes.

SE1/4 SEC 24 T6NR35E WM UMATILLA COUNTY SCALE 1"=200'

6N3524D

AERIAL PHOTO NO. NZ 6P-17

See Map 6N 35 24A



CANCELLED
1203
302
301
400
600
303
708
703

See Map 6N 36

Revised: 06-11-19

6N3524D