

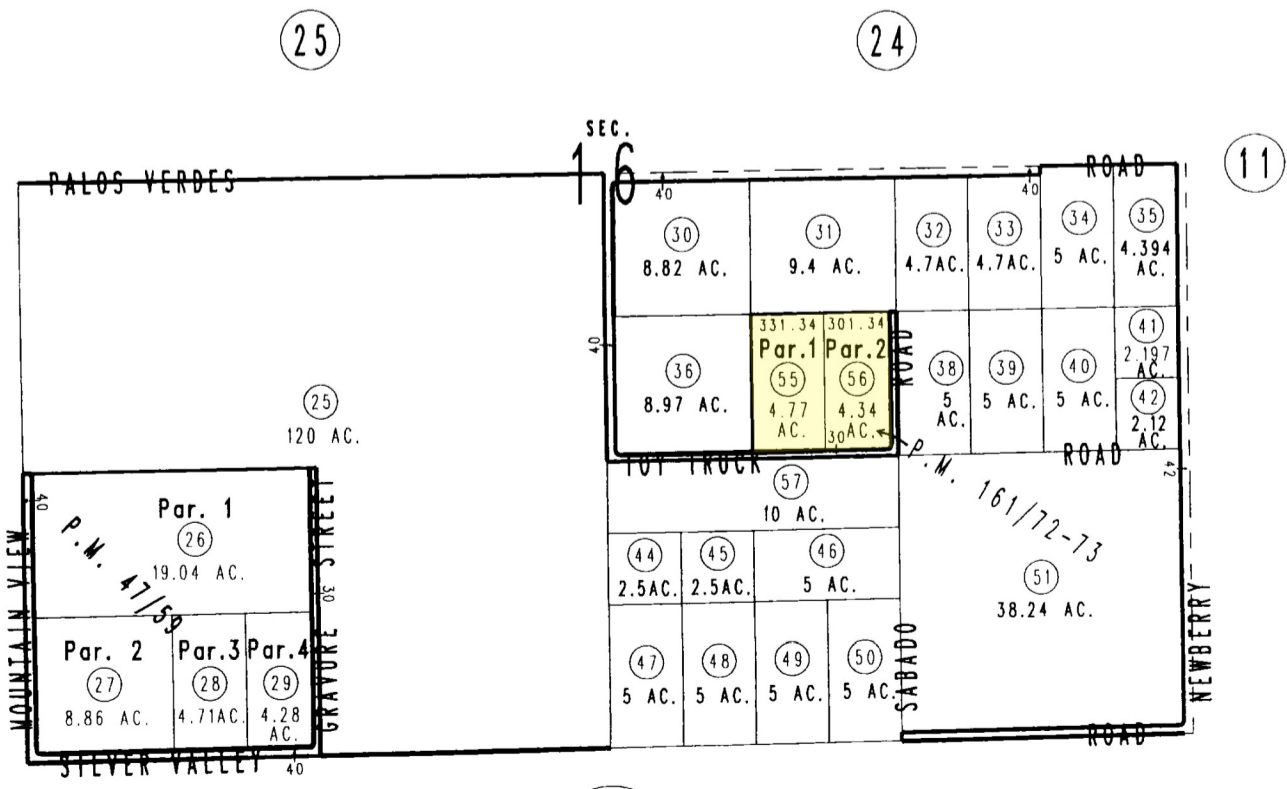
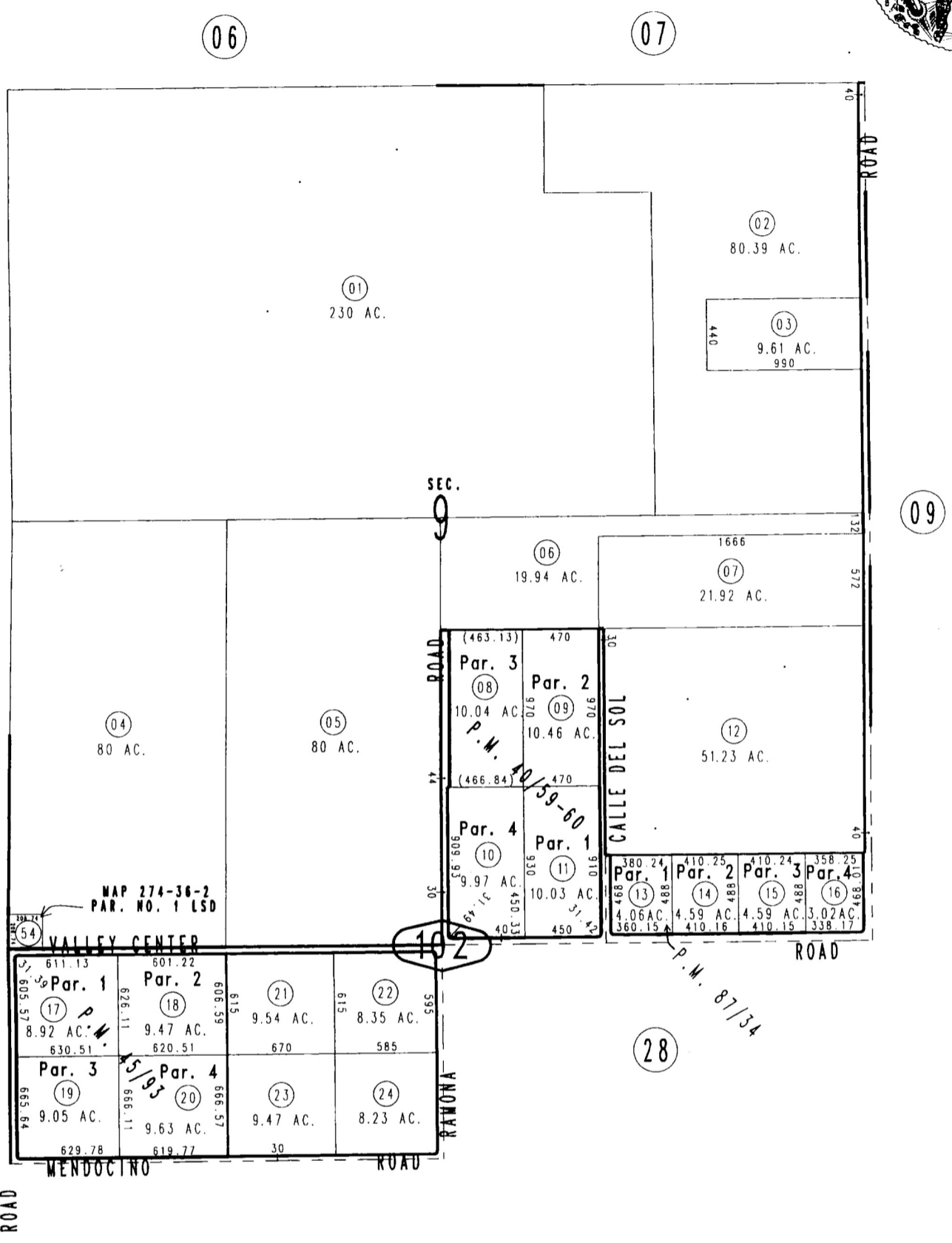
THIS MAP IS FOR THE PURPOSE OF AD VALOREM TAXATION ONLY.

BILL POSTMUS, Assessor

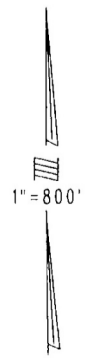


Sec. 9 & Ptn. Sec. 16, T. 9N., R. 3E., S.B.B.&M.

Silver Valley Unified 0532-10  
Tax Rate Area 109043



0531  
23



Parcel Map No. 11840, P.M. 161/72-73  
Parcel Map No. 4935, P.M. 47/59  
Parcel Map No. 8195, P.M. 87/34  
Parcel Map No. 4707, P.M. 45/93  
Parcel Map No. 4036, P.M. 40/59-60

Assessor's Map  
Book 0532 Page 10  
San Bernardino County

JUL 08 2008

REVISED  
11/20/07 KC  
06/26/08 TY

June 2005