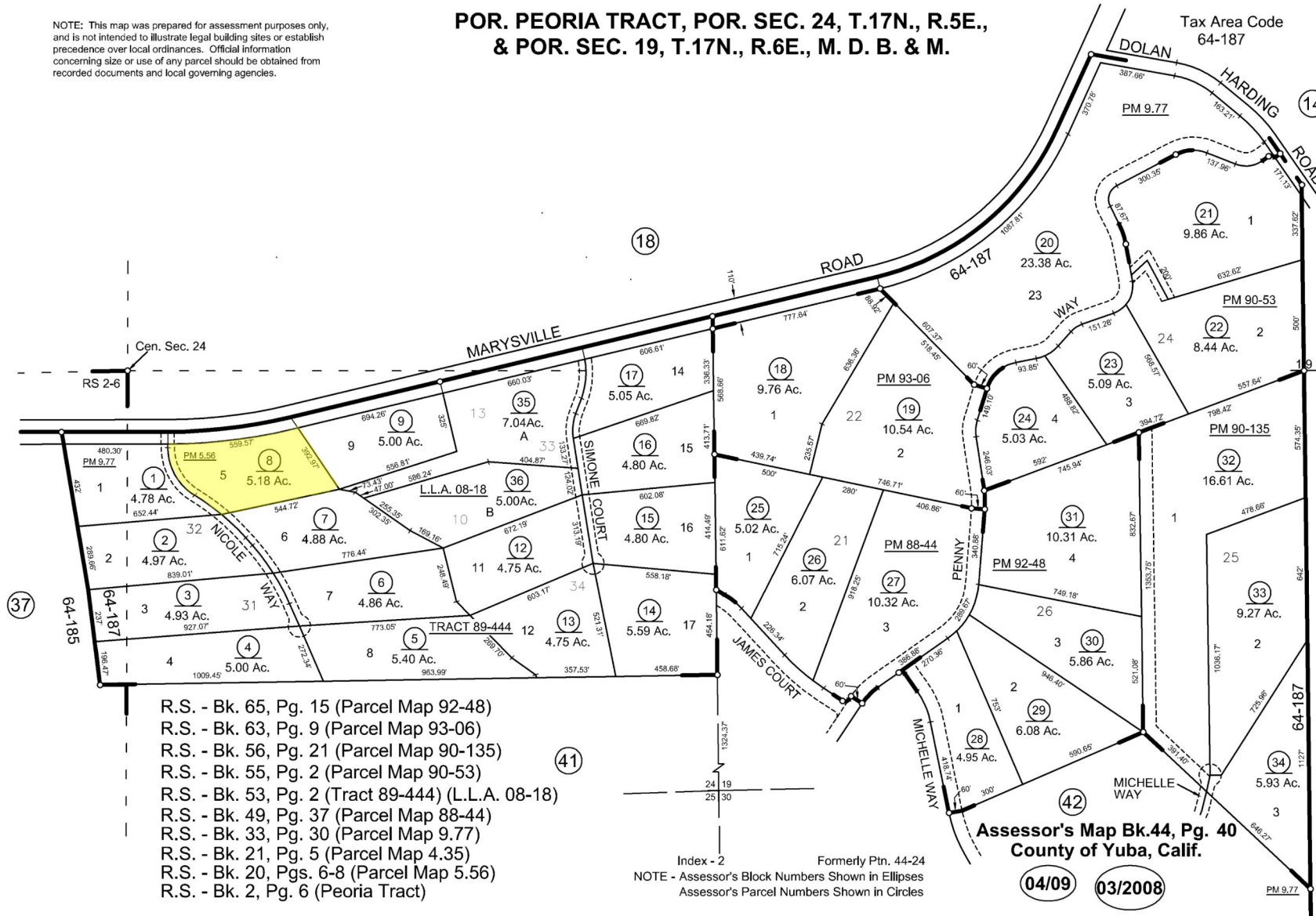
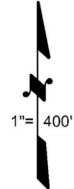


NOTE: This map was prepared for assessment purposes only, and is not intended to illustrate legal building sites or establish precedence over local ordinances. Official information concerning size or use of any parcel should be obtained from recorded documents and local governing agencies.

**POR. PEORIA TRACT, POR. SEC. 24, T.17N., R.5E.,
& POR. SEC. 19, T.17N., R.6E., M. D. B. & M.**

Tax Area Code
64-187

44-40



- R.S. - Bk. 65, Pg. 15 (Parcel Map 92-48)
- R.S. - Bk. 63, Pg. 9 (Parcel Map 93-06)
- R.S. - Bk. 56, Pg. 21 (Parcel Map 90-135)
- R.S. - Bk. 55, Pg. 2 (Parcel Map 90-53)
- R.S. - Bk. 53, Pg. 2 (Tract 89-444) (L.L.A. 08-18)
- R.S. - Bk. 49, Pg. 37 (Parcel Map 88-44)
- R.S. - Bk. 33, Pg. 30 (Parcel Map 9.77)
- R.S. - Bk. 21, Pg. 5 (Parcel Map 4.35)
- R.S. - Bk. 20, Pgs. 6-8 (Parcel Map 5.56)
- R.S. - Bk. 2, Pg. 6 (Peoria Tract)

Index - 2 Formerly Ptn. 44-24
NOTE - Assessor's Block Numbers Shown in Ellipses
Assessor's Parcel Numbers Shown in Circles

**Assessor's Map Bk.44, Pg. 40
County of Yuba, Calif.**

04/09 03/2008