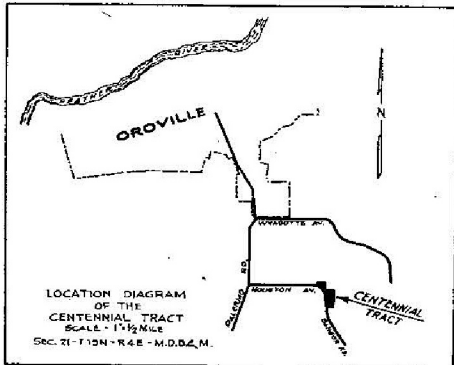
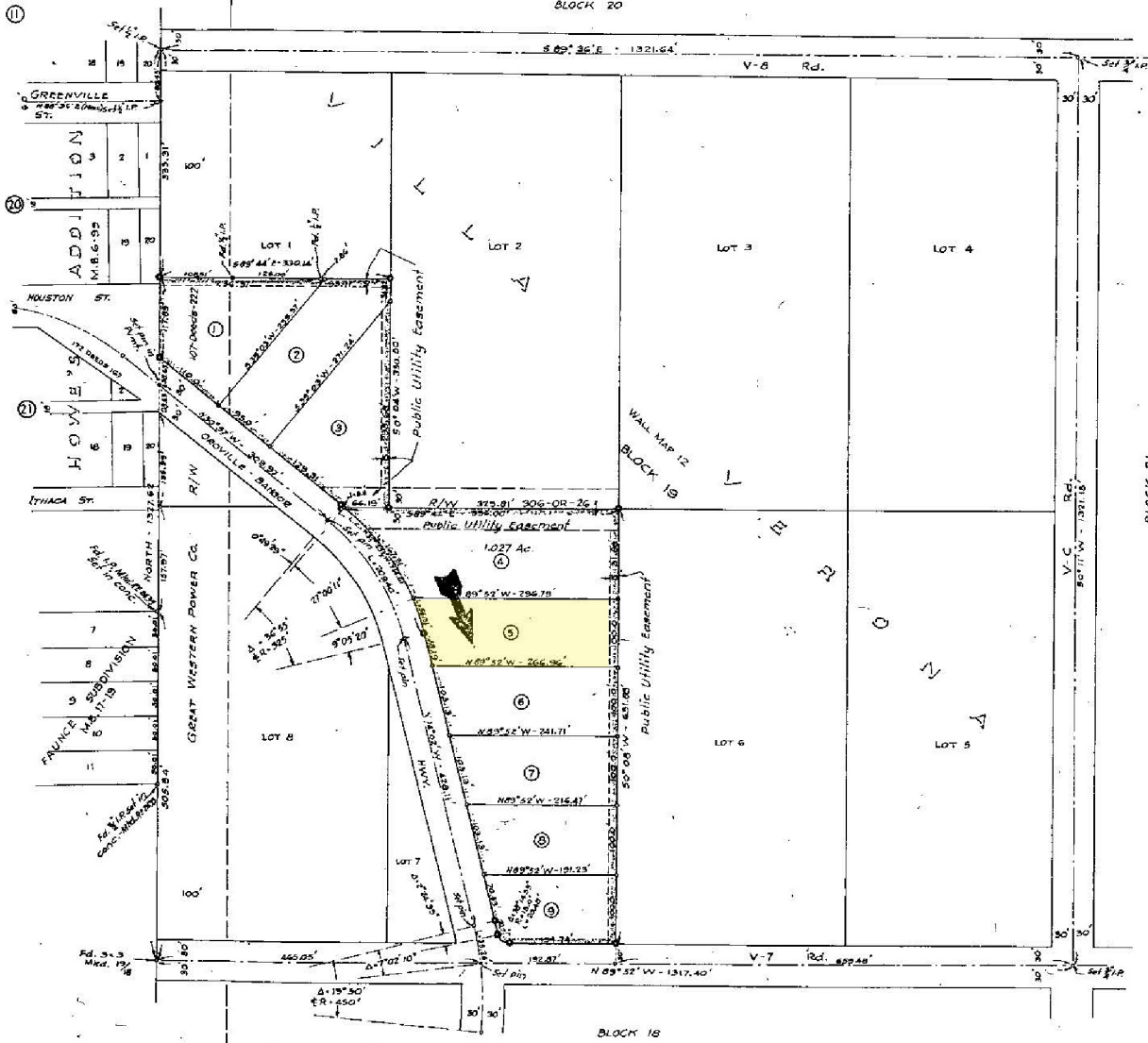


BLOCK 20



CENTENNIAL TRACT

IN 2 SHEETS
BEING A RESUBDIVISION OF PORTIONS OF
LOTS 1, 6 & 7 OF BLOCK 19 - VILLA VERONA

BUTTE COUNTY CALIFORNIA
MARCH 1950 SCALE 1"=100'

SURVEYED FOR
W.B. HENGY
BY
K.E. SOULE L.S. 2513

Basis of Bearing for this survey is the west line of blocks 18 and 20 of Villa Verona having a bearing of North.

NOTE - Concrete cylinder with copper center set at all tract corners and shown thusly. 2" iron pipe marked L.S. 2513 set at all other lot corners not so marked.

BLOCK 18