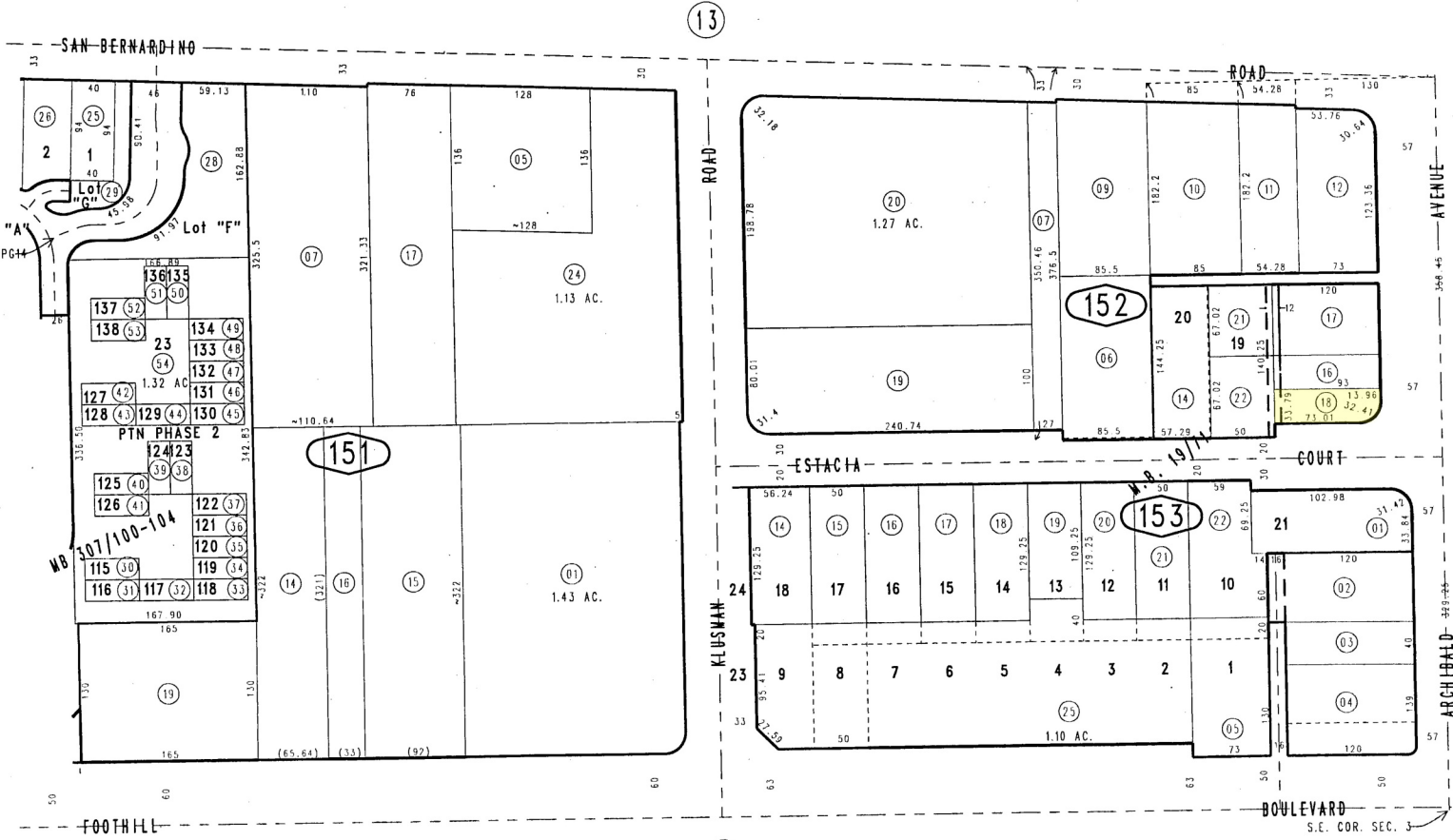


THIS MAP IS FOR THE PURPOSE
OF AD VALOREM TAXATION ONLY.

Ptn. S.E.1/4 Sec.3, T.1S.,R.7W., S.B.B.&M.

City of Rancho Cucamonga 0208-15
Tax Rate Area
15049



1077
15

14

13

26

JAN 06 2015

August 2004

Pln. Tract No. 16567, M.B. 307/100-104, Condo Plan 06-0157434, Ptn Phase 2
Lucas & Ward Sub., M.B. 19/71

Assessor's Map
Book 0208 Page 15
San Bernardino County

REVISED
06/09/14 RM
12/16/14 GW
12/17/14 GW