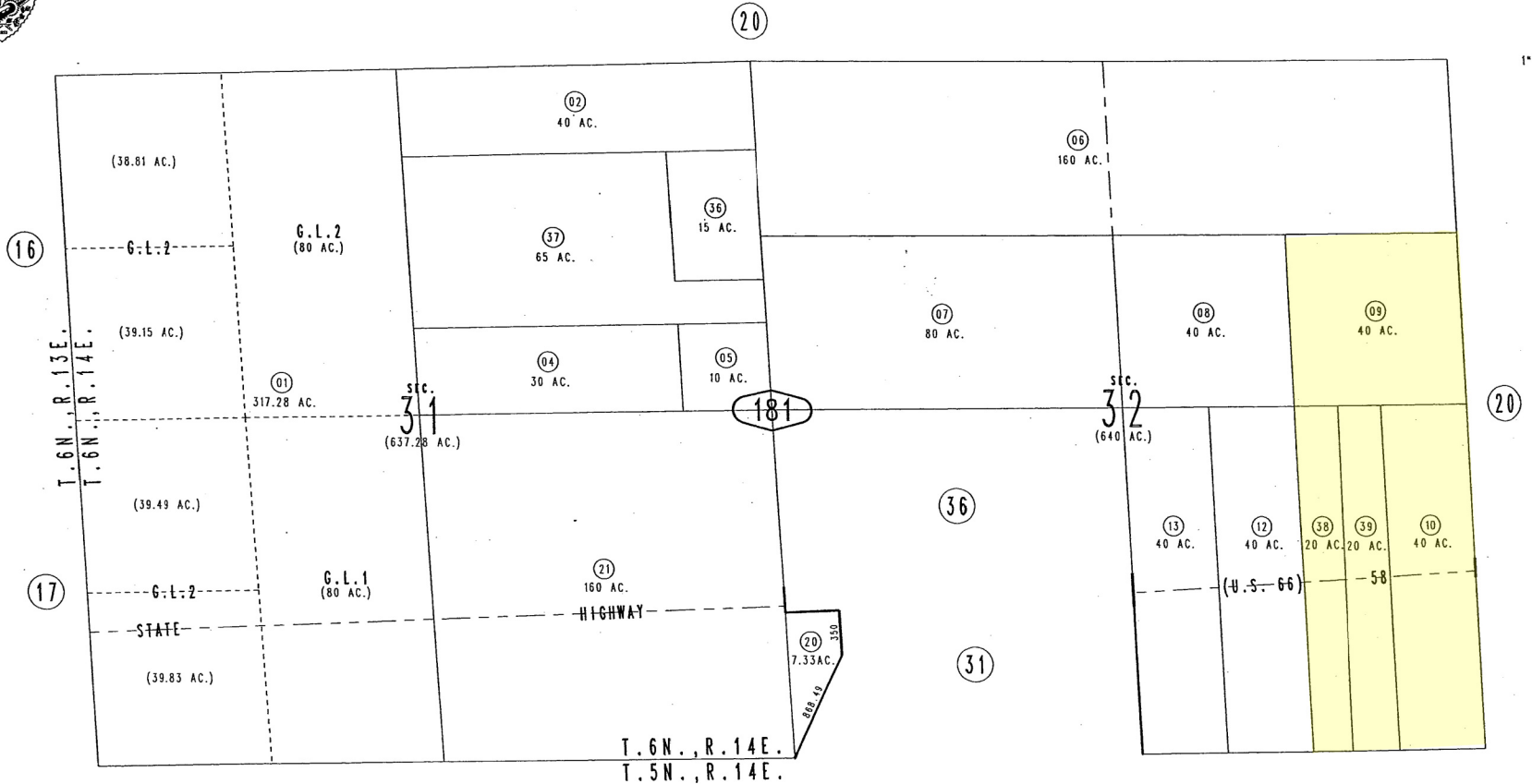
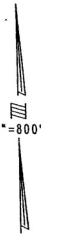


THIS MAP IS FOR THE PURPOSE
OF AD VALOREM TAXATION ONLY.

Fractional Sec.31 & Ptn. Sec.32, T.6N.,R.14E., S.B.B.&M.

Needles Unified
Tax Rate Area
96008

0558-18



0556
28

OCT 12 2005

REVISED

Assessor's Map
Book 0558 Page 18
San Bernardino County

July 2005