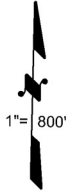
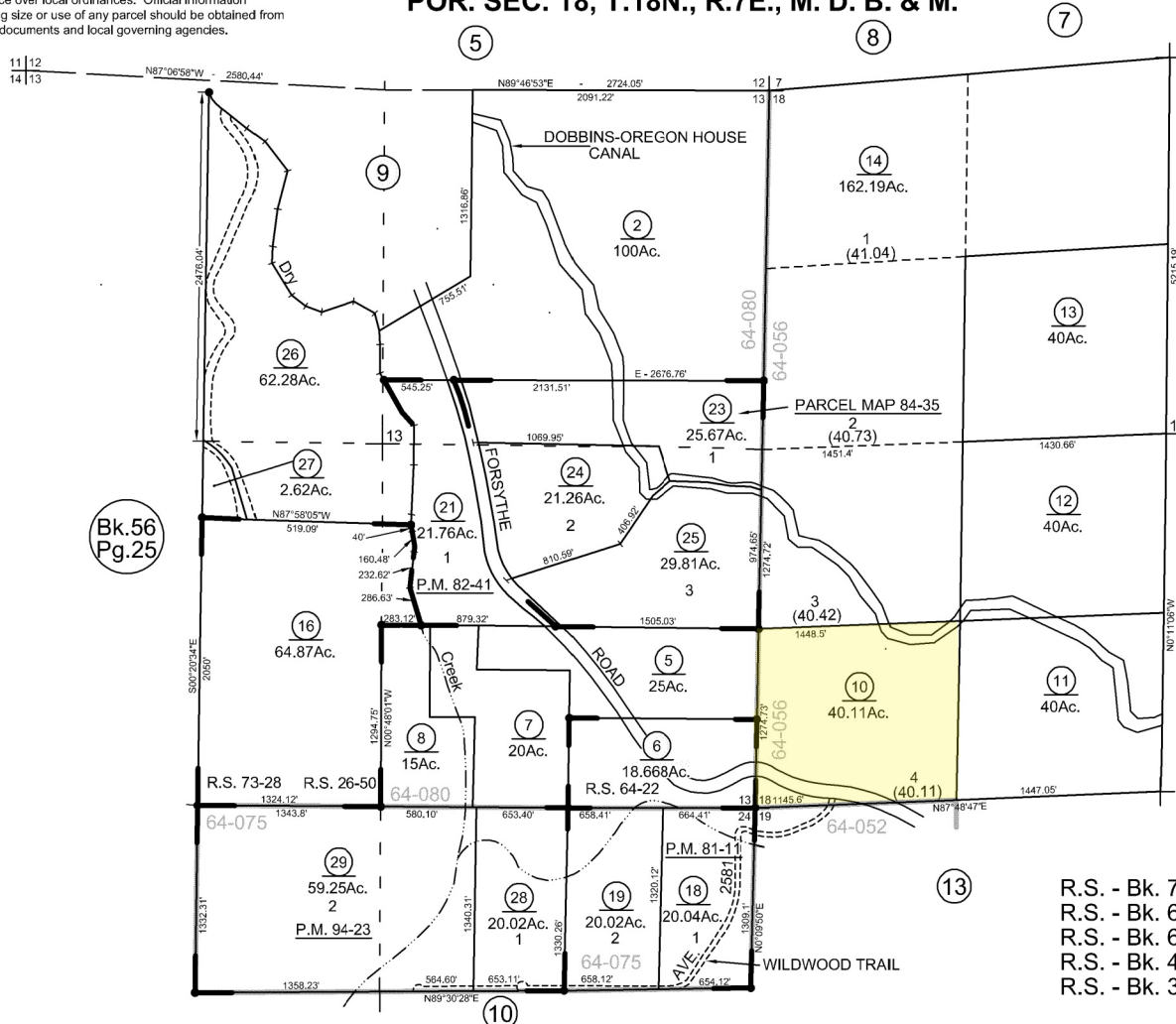


NOTE: This map was prepared for assessment purposes only, and is not intended to illustrate legal building sites or establish precedence over local ordinances. Official information concerning size or use of any parcel should be obtained from recorded documents and local governing agencies.

**POR. SEC. 13 & 24, T.18N., R.6E., M. D. B. & M.,
POR. SEC. 18, T.18N., R.7E., M. D. B. & M.**

Tax Area Code
64-075
64-080
64-056

60-11



Bk.56
Pg.25

R.S. - Bk. 14, Pg. 41 (Sec.13)
R.S. - Bk. 9, Pg. 1 (Sec.18)
R.S. - Bk. 8, Pg. 50 (Sec.13)

R.S. - Bk. 36, Pg. 22 (Parcel Map 81-11)
R.S. - Bk. 26, Pg. 50 (Sec.13)
R.S. - Bk. 20, Pg. 34 (Sec.13 & 24)

Index - 1 Formerly Ptn. 2-22
NOTE - Assessor's Block Numbers Shown in Ellipses
Assessor's Parcel Numbers Shown in Circles

R.S. - Bk. 73, Pg. 28 (R.O.S. 02-01)
R.S. - Bk. 65, Pg. 38 (Parcel Map 94-23)
R.S. - Bk. 64, Pg. 22 (R.O.S. 94-08)
R.S. - Bk. 42, Pgs. 41,42 (Parcel Map 84-35)
R.S. - Bk. 38, Pg. 12 (Parcel Map 82-41)

Assessor's Map Bk.60, Pg. 11
County of Yuba, Calif.
Year-2/79