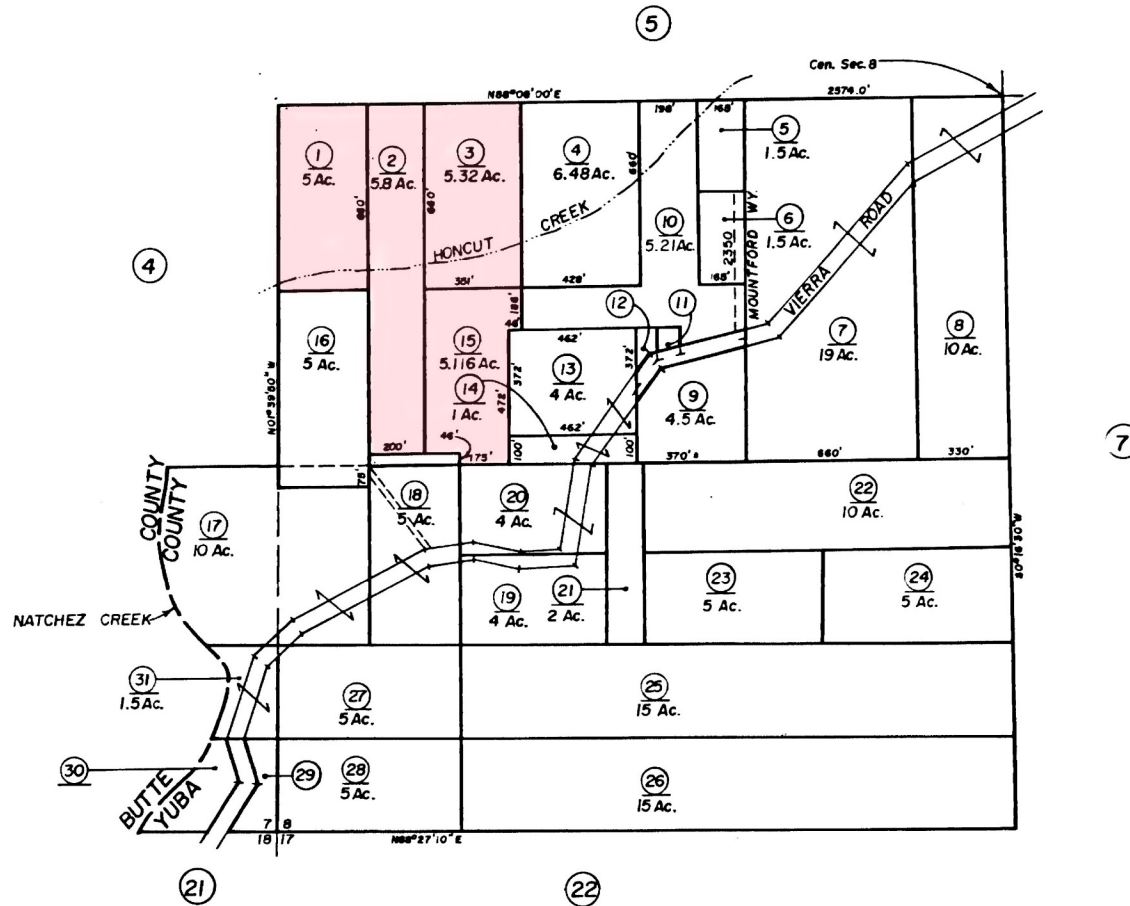
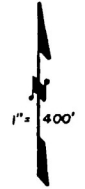


SW 1/4 SEC. 8, & POR. SEC. 7, T.18N., R.6E., M.D.B.&M.

Tax Area Code
64-091
64-092

56-6



Formerly 2-50
Index-1
NOTE - Assessor's Block Numbers Shown in Ellipses
Assessor's Parcel Numbers Shown in Circles

Assessor's Map Bk.56, Pg.6
County of Yuba, Calif.
Year-2/79

JUL 16 2003