

S 1/2 SEC. 27 T13N R9W

THIS MAP WAS PREPARED FOR
ASSESSMENT PURPOSES ONLY.
NO LIABILITY IS ASSUMED FOR
THE ACCURACY OF THE DATA
DELINEATED HEREON.

TRA
56-019
56-027

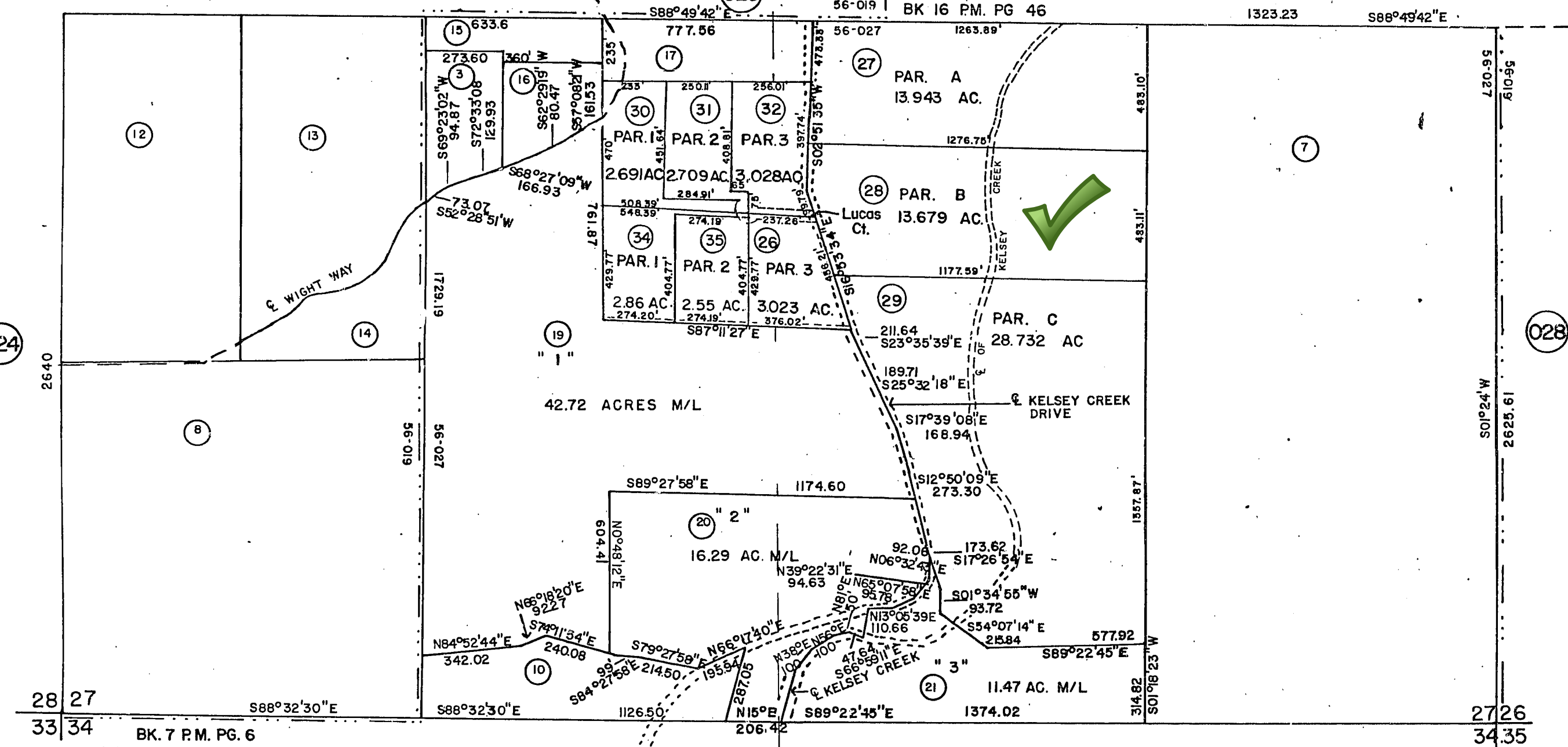
7-026

BK 15 PM. PG 48
BK 16 PM. PG 24

BK 17 PM. PG 14

CENTER
SEC. 27-13-9

DAN L. IRWIN
Assessor, Lake County



024

025

028

037

28 27
33 34

BK. 7 P.M. PG. 6

27 26
34 35