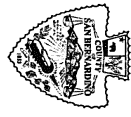
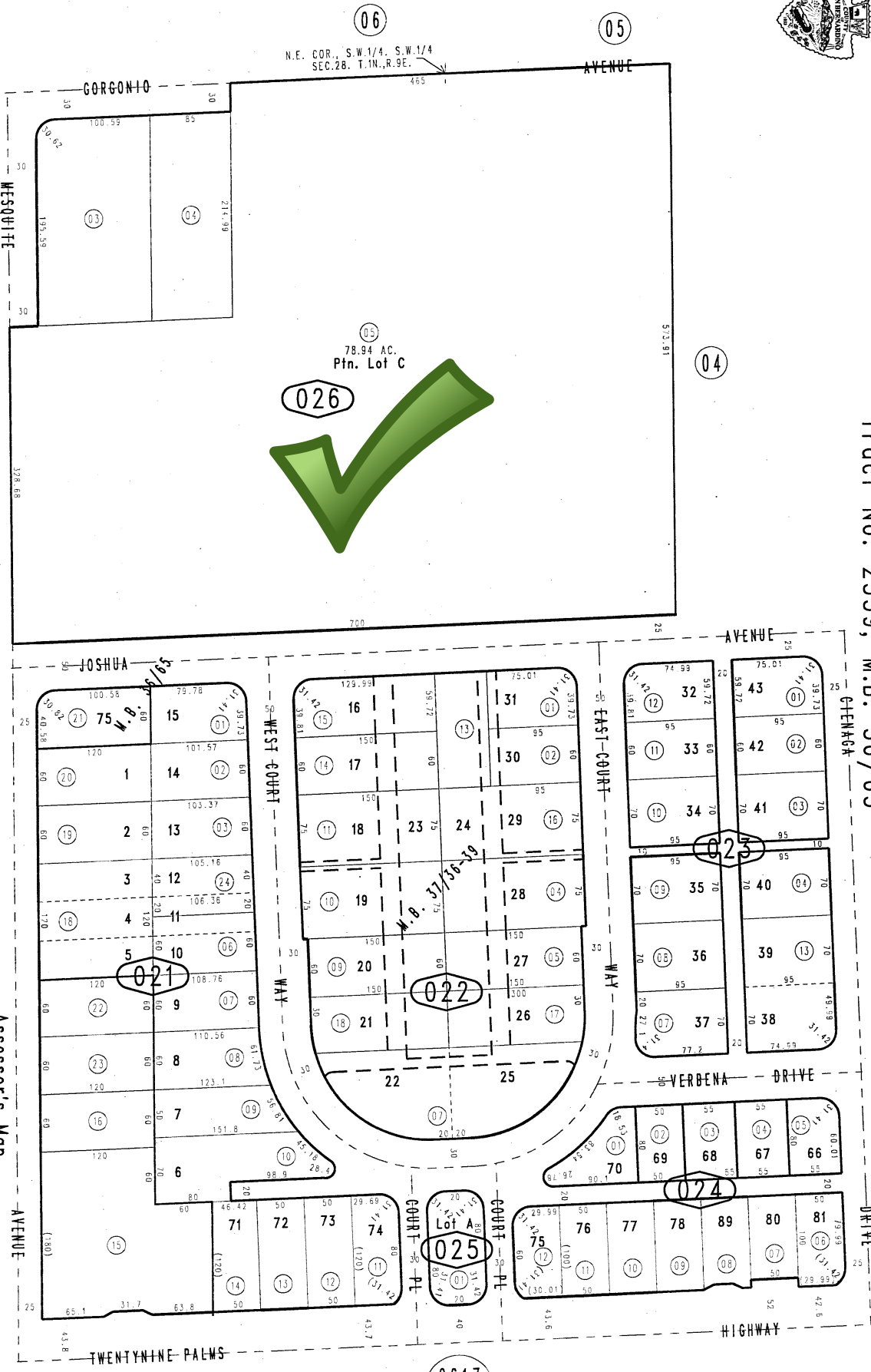


THIS MAP IS FOR THE PURPOSE OF AD VALOREM TAXATION ONLY.



Ptn. S.W.1/4, S.W.1/4, Sec.28, T.1N.,R.9E., S.B.B.&M.
Ptn. Tract No. 2613, M.B. 37/36-39
Tract No. 2559, M.B. 36/65

City of Twentynine Palms 0623-02
Tax Rate Area
19015



06
N.E. COR., S.W.1/4, S.W.1/4
SEC.28, T.1N.,R.9E.

05

05
78.94 AC.
Ptn. Lot C
026

04

01

03

0617
23

March 2005

Assessor's Map
Book 0623 Page 02
San Bernardino County

APR 06 2015
REVISED
03/23/15 KC