

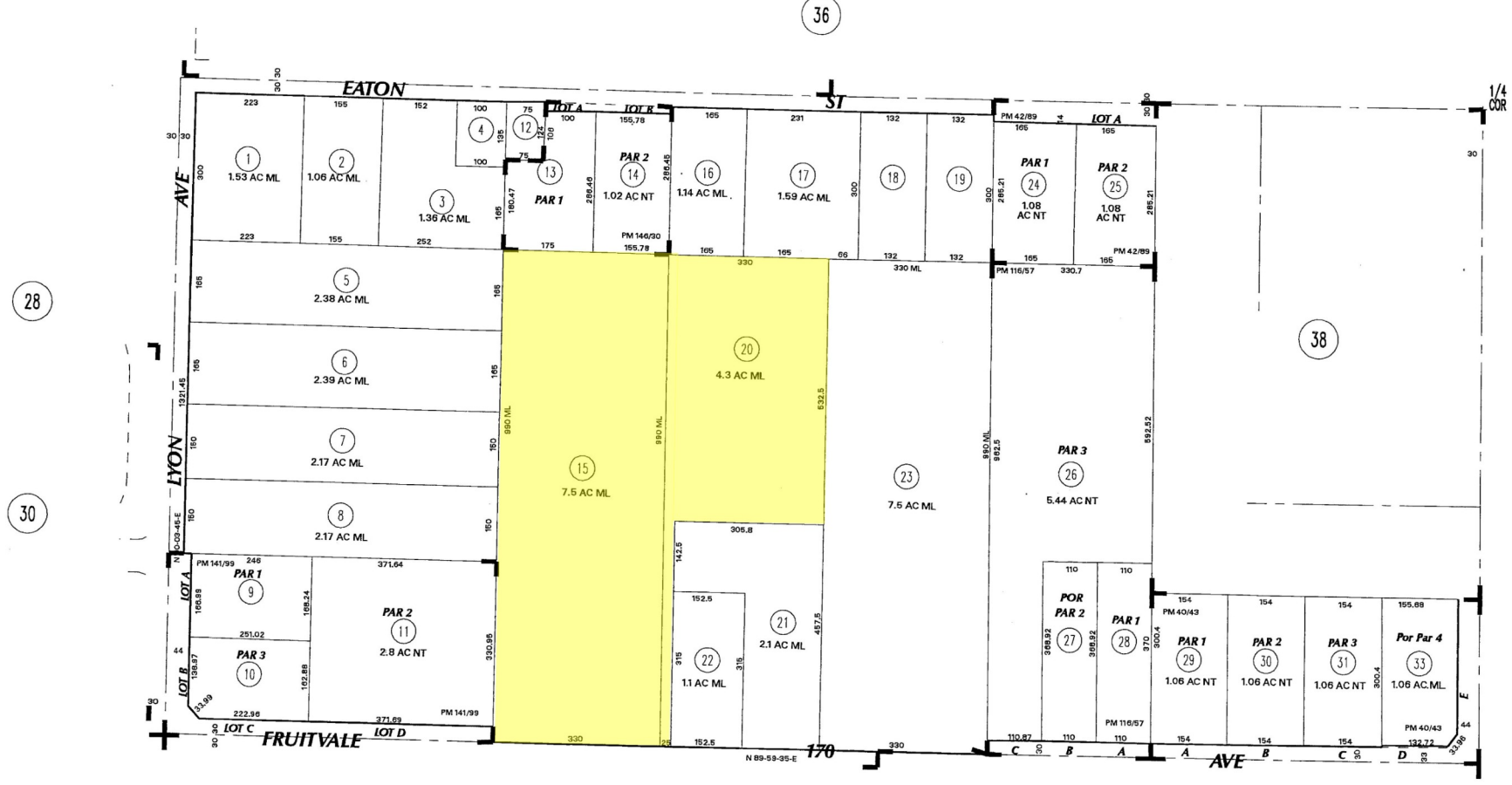
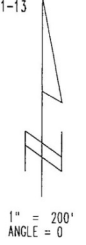
THIS MAP WAS PREPARED FOR ASSESSMENT PURPOSES ONLY. NO LIABILITY IS ASSUMED FOR THE ACCURACY OF THE DATA SHOWN. ASSESSOR'S PARCEL MAY NOT COMPLY WITH LOCAL LOT-SPLIT OR BUILDING SITE ORDINANCES.

FEB 23 2006

POR. E 4 T. 5S., R. 1W
CITY OF HEMET

T.R.A. 006-222

444-37
441-13



DATA: RS 24/84, RS 48/59

ASSESSOR'S MAP BK444 PG.37
Riverside County, Calif.

cm

PM 116/57-58 PARCEL MAP NO. 19248
PM 40/43 PARCEL MAP NO. 9228
PM 42/89 PARCEL MAP NO. 9956
MB 8/357 S.D. SAN JACINTO LAND ASSOCIATION
PM 141/99-100 PARCEL MAP NO. 21513
PM 146/30-31 PARCEL MAP NO. 21401

MAP 0 8 2006

DATE	OLD NUMBER	NEW NUMBER
02/05	32	33, ST.

Feb 2006