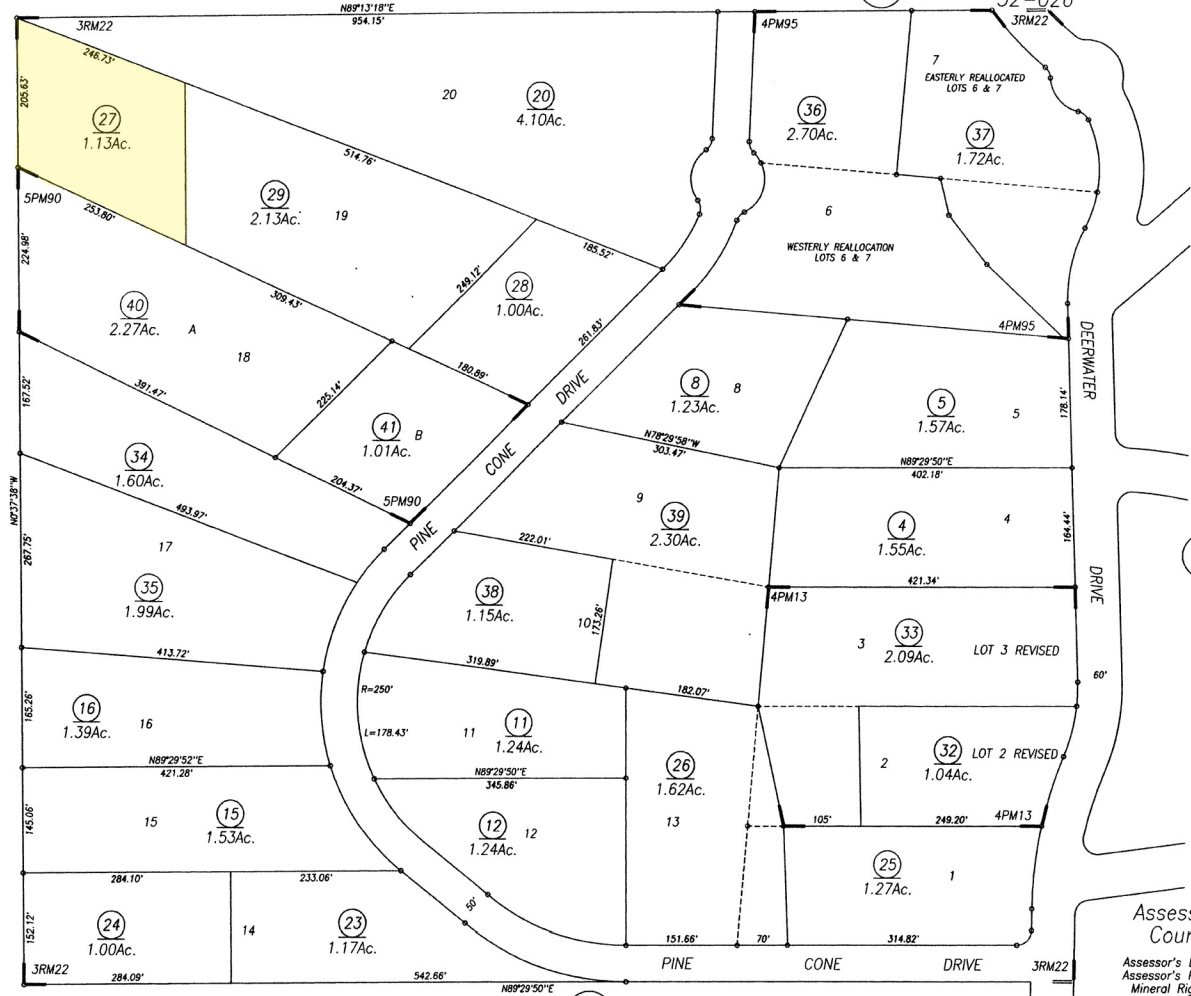


01



14

Assessor's Bk.23, Pg.13
County of Sierra, CA

Assessor's Block Numbers Shown in Ellipses.
Assessor's Parcel Numbers Are Shown in Circles.
Mineral Right Parcels Are Shown Hatched.

NOTE
This map was prepared for assessment purposes only, and is not intended to illustrate legal building sites or supersede local ordinances. Official information concerning size or use of any parcel should be obtained from recorded documents and local governing agencies.

VERDI-SIERRA PINES SUBDIVISION UNIT No. 1

DRAWN	tew 6-20-2001	REVISED
REVISED	EJ 01/04/2012	REVISED
REVISED		REVISED
REVISED		REVISED
Copyright © 2000, Sierra County Assessor's Office, All Rights Reserved		