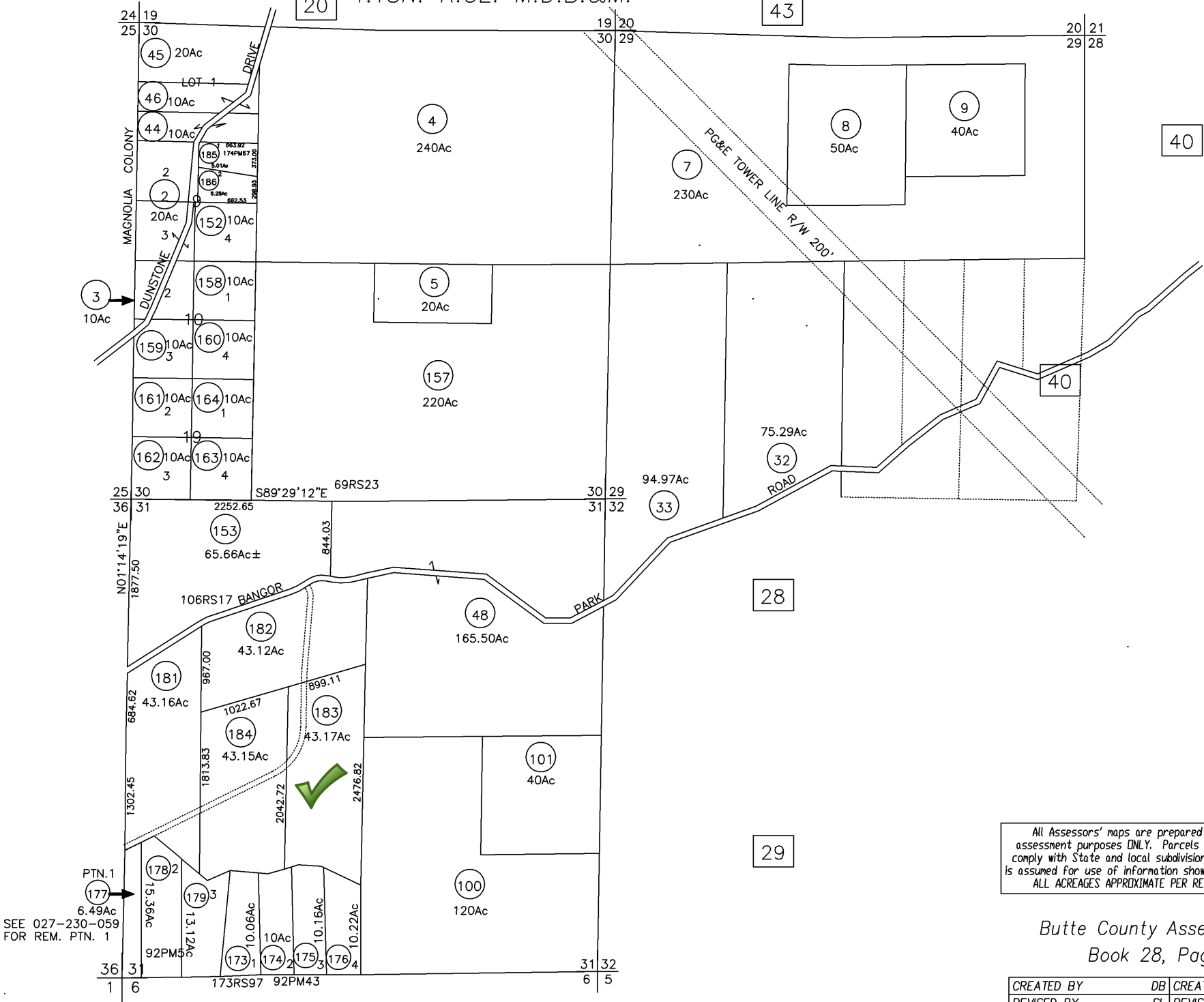


T.18N. R.5E. M.D.B.&M.

1"=1200'



All Assessors' maps are prepared for local property assessment purposes ONLY. Parcels shown thereon may not comply with State and local subdivision ordinances. No liability is assumed for use of information shown on any Assessors' map. ALL ACREAGES APPROXIMATE PER RECORDED INFORMATION.

Butte County Assessor's Map
Book 28, Page 27

CREATED BY	DB	CREATED ON	10-24-2008
REVISED BY	SL	REVISED ON	10-28-2008
FILE NAME	28-27	EFFECTIVE	2009-10 ROLL

Compiled By The Butte County Assessor's Office

SEE 027-230-059 FOR REM. PTN. 1