

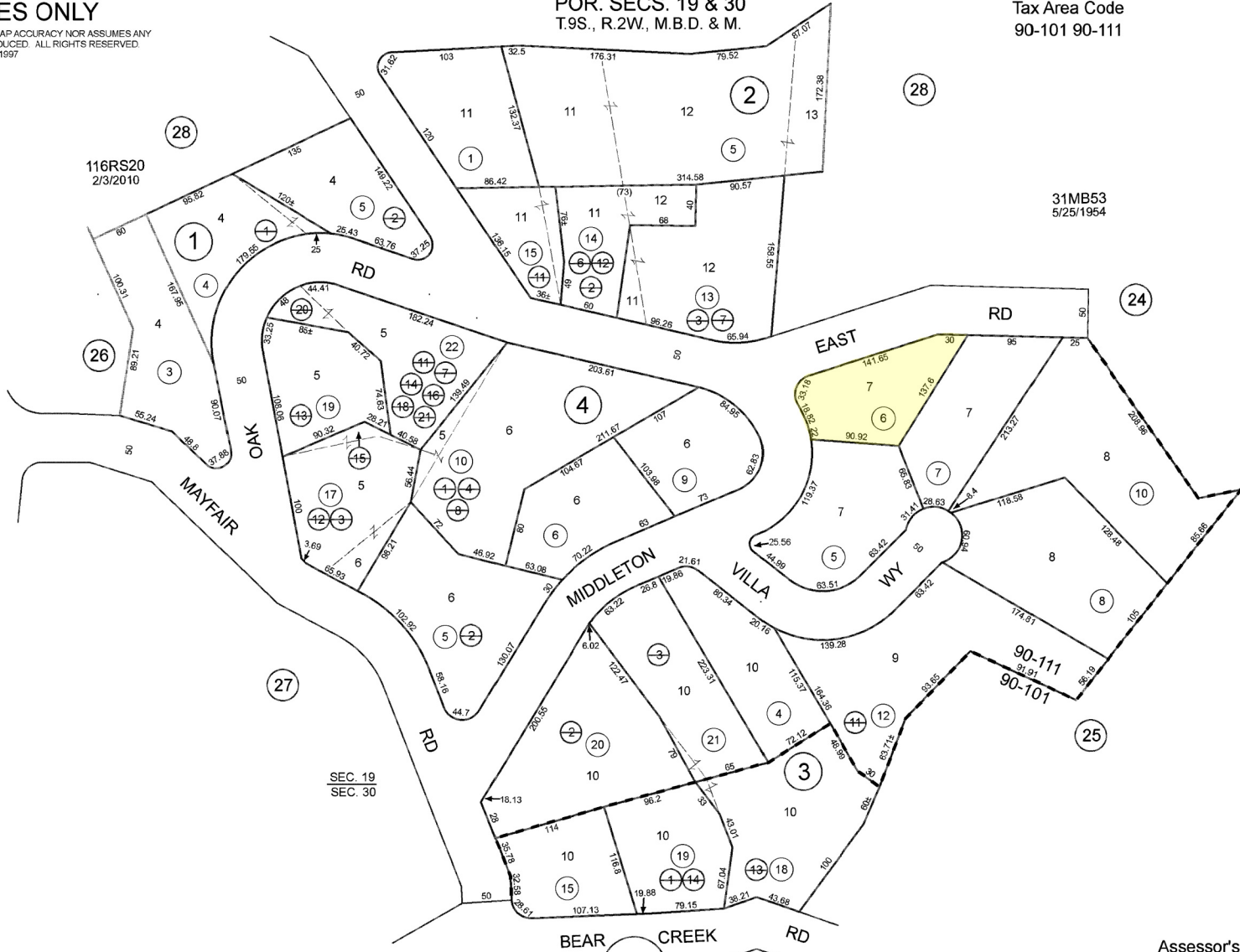
FOR TAX PURPOSES ONLY

THE ASSESSOR MAKES NO GUARANTEE AS TO MAP ACCURACY NOR ASSUMES ANY LIABILITY FOR OTHER USES. NOT TO BE REPRODUCED. ALL RIGHTS RESERVED.
© COPYRIGHT SANTA CRUZ COUNTY ASSESSOR 1997

POR. SECS. 19 & 30
T.9S., R.2W., M.B.D. & M.

Tax Area Code
90-101 90-111

82-29



116RS20
2/3/2010

31MB53
5/25/1954

SEC. 19
SEC. 30

90-111
91-91
90-101

Bk.81
09

Note - Assessor's Parcel & Block Numbers Shown in Circles.

Assessor's Map No. 82-29
County of Santa Cruz, Calif.
Jan. 1997

Electronically Redrawn 1/11/07 by
Rev 6/3/98 CB (TCA Consolidation)
Rev 6/24/98 CB (For to pg 62-25)
Rev 5/20/99 CB (Tax Consolidation)
Rev 1/2/01 CB (For to pg 62-25)
Rev 6/23/01 CB (Change to pg 62-25)
Rev 6/23/02 DC (For to pg 24)
Rev 3/27/11 CB (116RS20)