

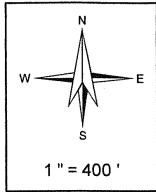
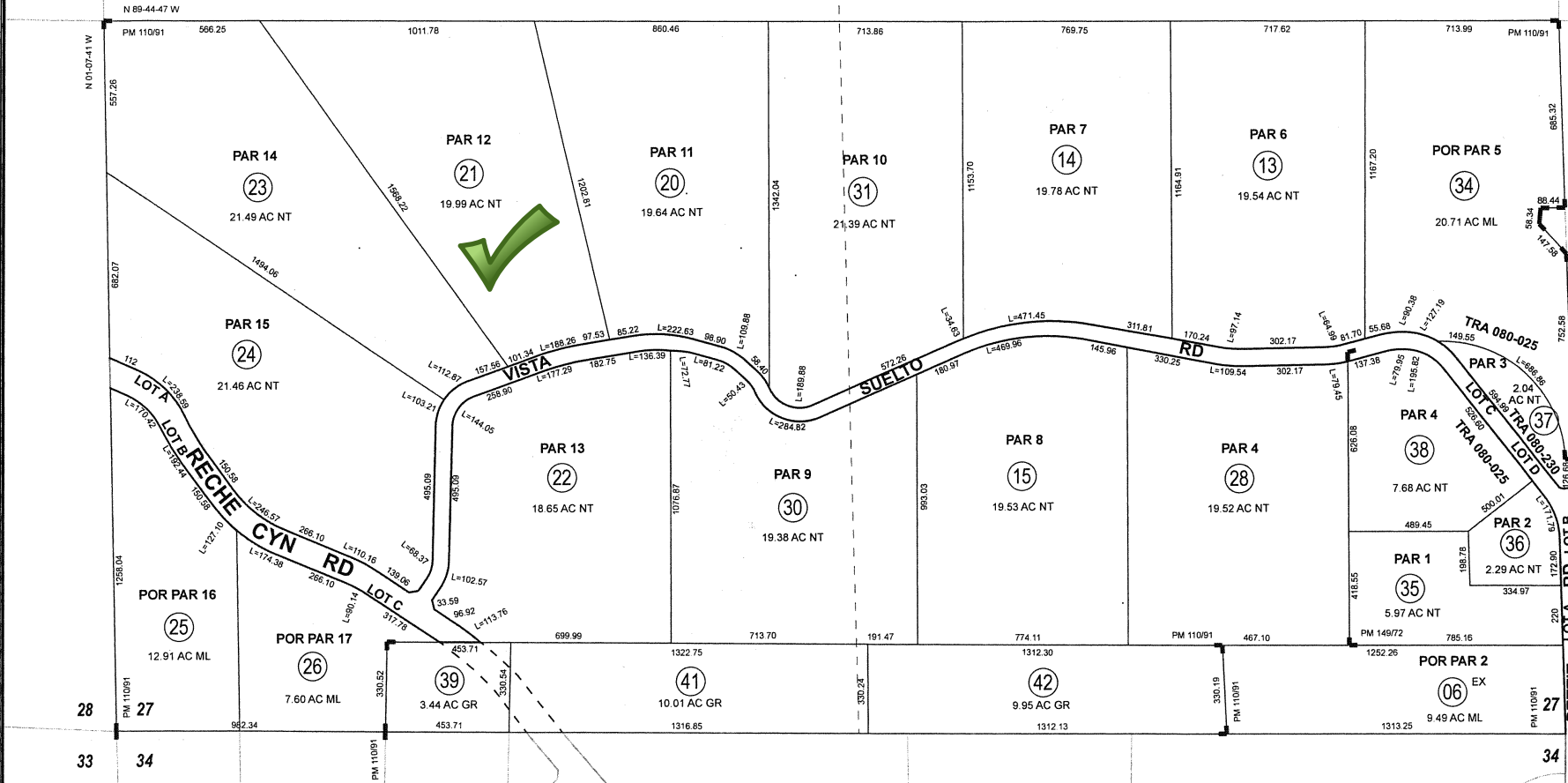
THIS MAP WAS PREPARED FOR ASSESSMENT PURPOSES ONLY. NO LIABILITY IS ASSUMED FOR THE ACCURACY OF THE DATA SHOWN. ASSESSOR'S PARCEL MAY NOT COMPLY WITH LOCAL LOT-SPLIT OR BUILDING SITE ORDINANCES.

MAY 09 2014

SEC. 26, 27 T.2S, R.3W

TRA 080-025
080-230

473-10
12-42



Legend

- Lot Lines
- Right-Of-Way
- Old Lot Lines
- Reference R.O.W
- Other Easements
- Lease Areas
- Subdivision Tie Mark

Data

RS 12/96, 15/19
159/11 Dds. 6/10/1892

Bk 474 Pg 04	Pg 09	Pg 11
	Pg 10	Pg 42
Bk 474 Pg 21	Pg 15	Pg 25

Map Reference

PM 110/91 - 96 PARCEL MAP NO. 18349
PM 149/72 - 74 PARCEL MAP NO. 21423

Date	Old Number	New Number
12/1/1972	1	4-5
1/1/1983	3	6-9
1/1/1983	5	10-17
1/1/1983	4	18-26
1/1/1983	7, 10	27
1/1/1983	8, 11	28
1/1/1983	9, 12	29
1/1/1983	16, 18	30
1/1/1983	17, 19	31
1/1/1984	28	32, 120-32
1/1/1988	27, 32	33, 34
1/1/1988	33	35-38
4/8/2014	2	39-40
4/8/2014	40	41-42

JUN 03 2014

Apr 2014



ASSESSOR'S MAP BK473 PG. 10
Riverside County, Calif.

mihillig