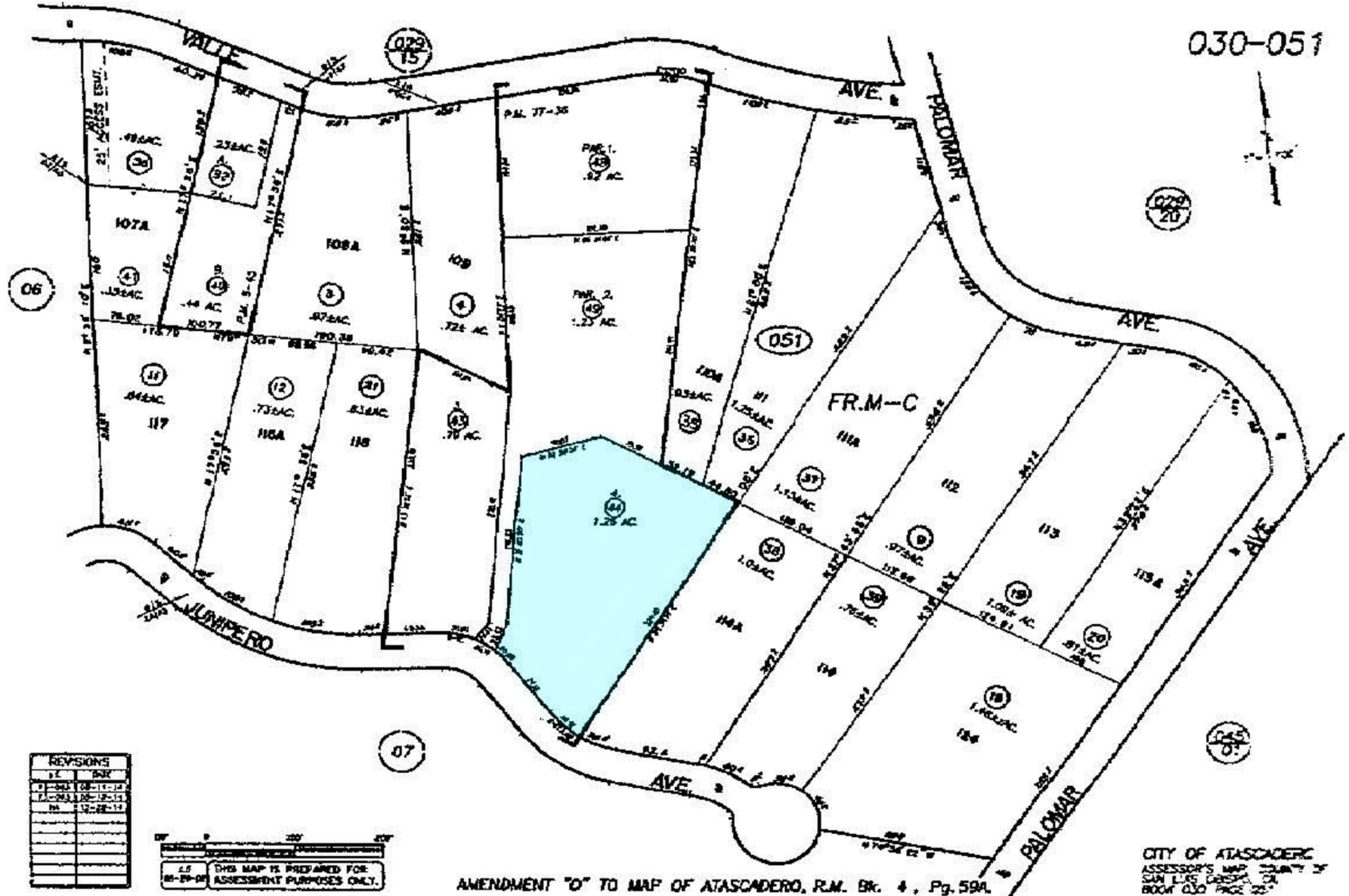


030-051



06

023
15

023
20

051

07

045
07

REVISIONS	
DATE	BY
12-15-11	
12-15-11	
12-15-11	
12-15-11	
12-15-11	
12-15-11	
12-15-11	
12-15-11	
12-15-11	
12-15-11	

THIS MAP IS PREPARED FOR
ASSESSMENT PURPOSES ONLY.

AMENDMENT "O" TO MAP OF ATASCADERO, P.M. Bk. 4, Pg. 59A.

CITY OF ATASCADERO
ASSESSOR'S MAP COUNTY OF
SAN LUIS OBISPO
BOOK 030 PAGE 25