

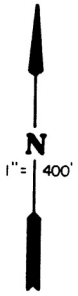
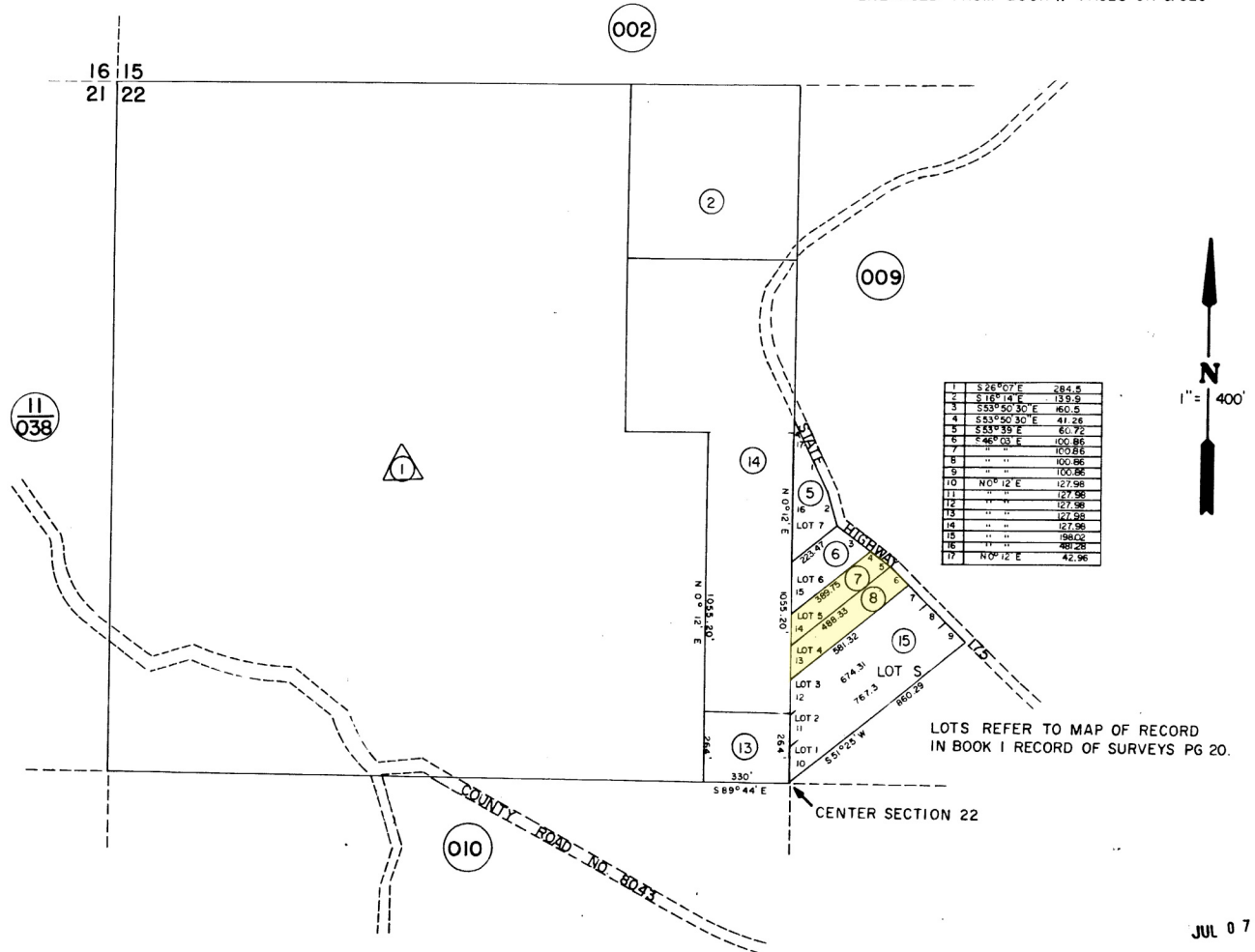
PORTION OF N1/2 OF SECTION 22 T12N R8W

T.R.A.
56-066

115-008

THIS MAP WAS PREPARED FOR
 ASSESSMENT PURPOSES ONLY.
 NO LIABILITY IS ASSUMED FOR
 THE ACCURACY OF THE DATA
 DELINEATED HEREON.
 DAN L. IRWIN
 Assessor, Lake County

ENLARGED FROM BOOK II PAGES 011 & 029



JUL 07 1994