

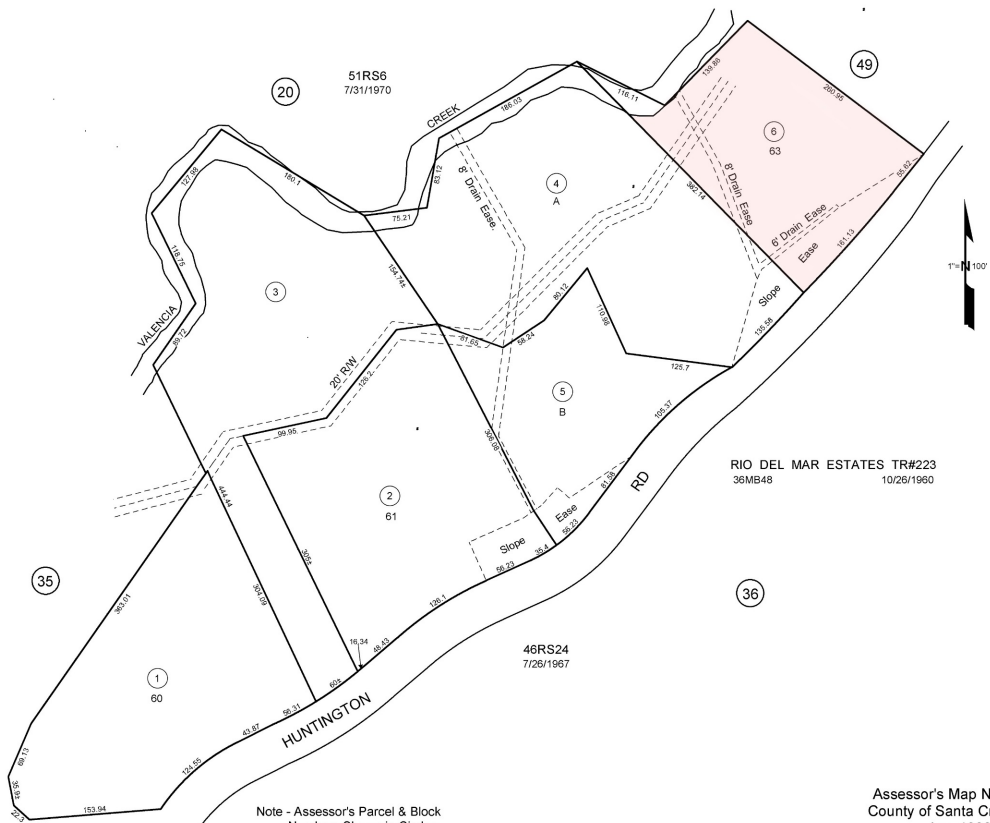
**FOR TAX PURPOSES ONLY**

THE ASSESSOR MAKES NO GUARANTEE AS TO MAP ACCURACY NOR ASSUMES ANY LIABILITY FOR OTHER USES. NOT TO BE REPRODUCED. ALL RIGHTS RESERVED. © COPYRIGHT SANTA CRUZ COUNTY ASSESSOR 1999

**POR. APTOS RANCHO  
SEC. 9 T.11S., R.1E., M.D.B. & M.**

Tax Area Code  
69-280

**41-67**



Electronically Redrawn 11/4/99 by  
Rbr 1070714 031 (COP Information 1-04 & 60)

Note - Assessor's Parcel & Block  
Numbers Shown in Circles.

Assessor's Map No. 41-67  
County of Santa Cruz, Calif.  
Jan. 1999