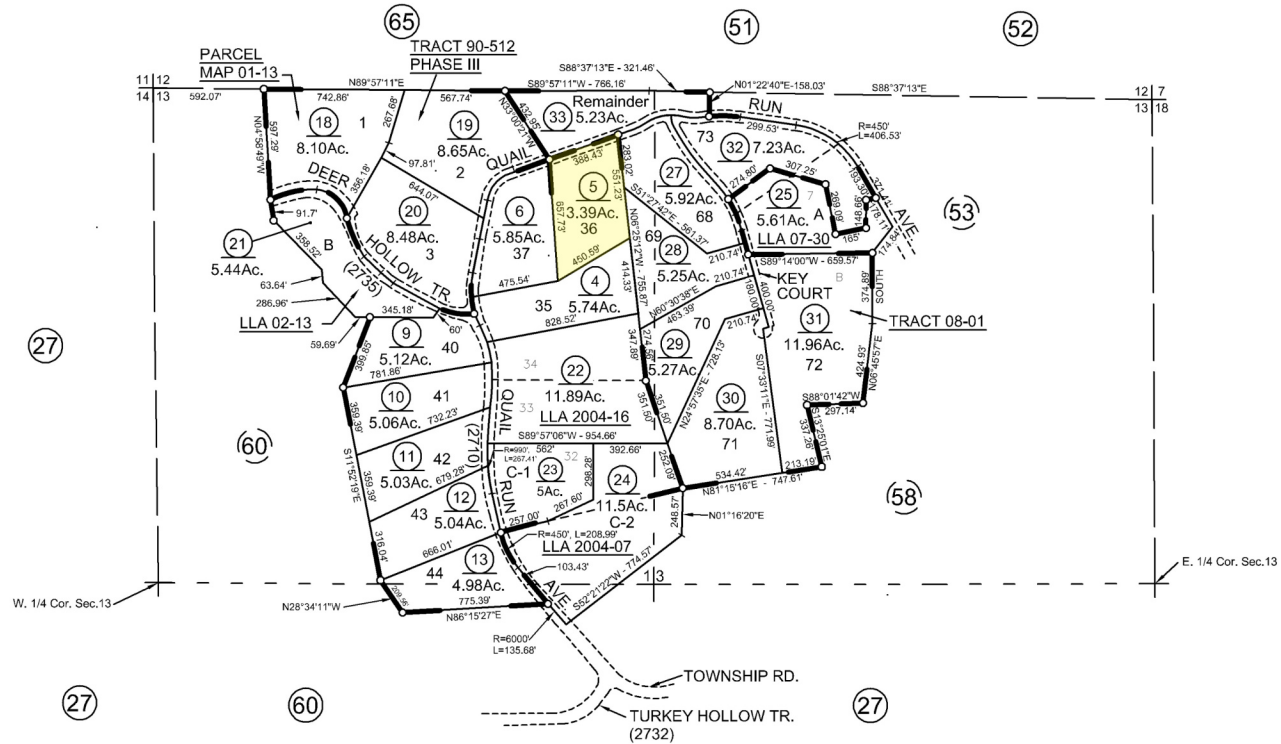


**PEORIA RIDGE ESTATES - PHASE III, TRACT 90-512
POR. SEC. 13, T.16N., R.5E., M. D. B. & M.**

Tax Rate Area
64-386

5-59



R.S. - Bk. 91, Pgs. 6 & 7 (Tract 08-01)
 R.S. - Bk. 73, Pg. 31 (Parcel Map 01-13)
 R.S. - Bk. 72, Pgs. 40 & 41 (Tract 90-512, Phase III) (LLA 02-13) (LLA 04-16) (LLA 04-07)

(LLA 07-30)

Index - 4 Formerly Por. 5-27
 NOTE - Assessor's Block Numbers Shown in Ellipses
 Assessor's Parcel Numbers Shown in Circles

**Assessor's Map Bk. 5, Pg. 59
County of Yuba, Calif.**

(04/09) (4/2002)

NOTE: This map was prepared for assessment purposes only, and is not intended to illustrate legal building sites or establish precedence over local ordinances. Official information concerning size or use of any parcel should be obtained from recorded documents and local governing agencies.