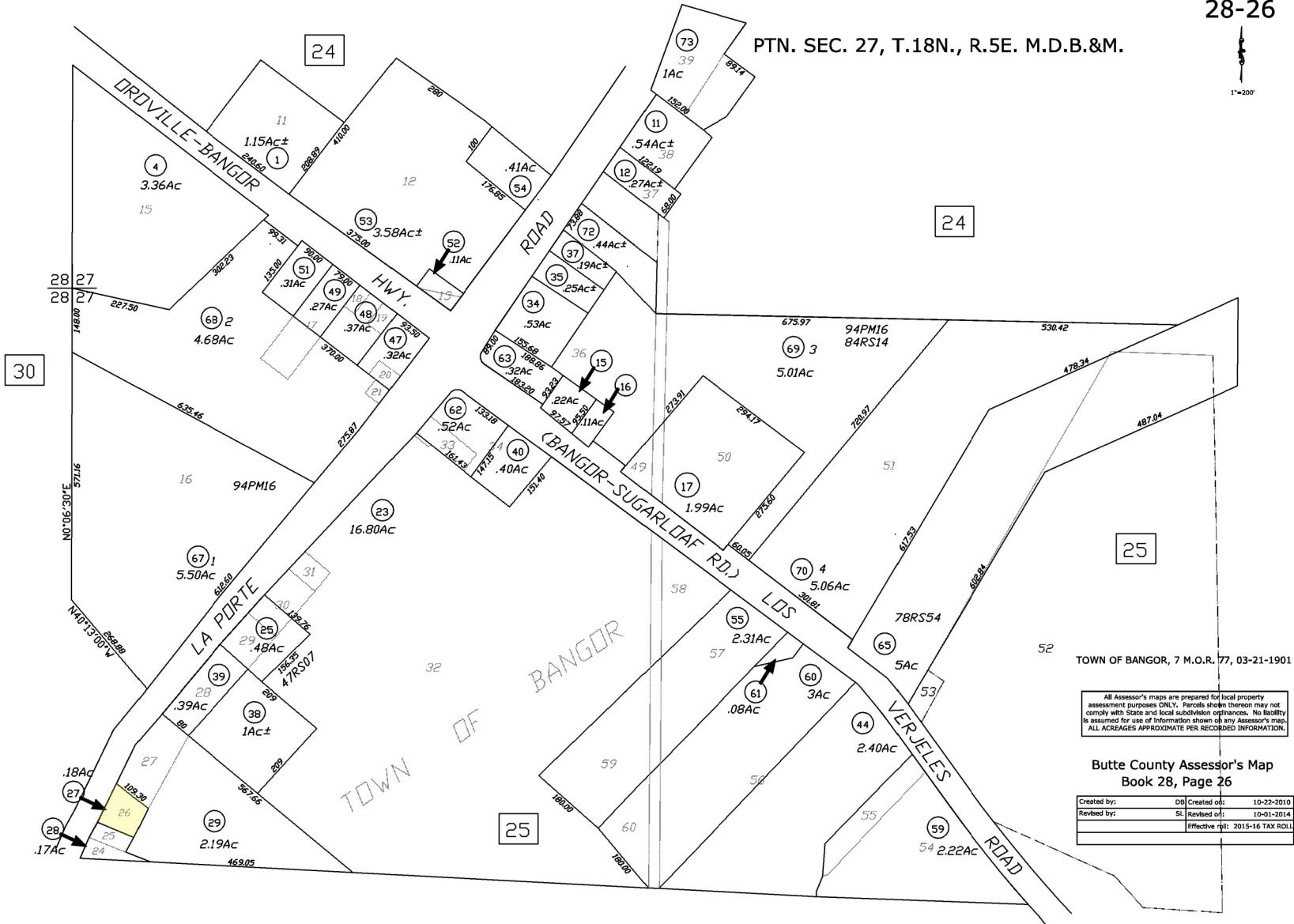


PTN. SEC. 27, T.18N., R.5E. M.D.B.&M.



TOWN OF BANGOR, 7 M.O.R. 77, 03-21-1901

All Assessor's maps are prepared for local property assessment purposes ONLY. Parcels shown thereon may not comply with State and local subdivision ordinances. No liability is assumed for use of information shown on any Assessor's map. ALL ACRESAGES APPROXIMATE PER RECORDED INFORMATION.

Butte County Assessor's Map
Book 28, Page 26

Created by:	DB	Created on:	10-22-2010
Revised by:	SL	Revised on:	10-01-2014
		Effective roll:	2015-16 TAX ROLL