

THIS MAP WAS PREPARED FOR ASSESSMENT PURPOSES ONLY. NO LIABILITY IS ASSUMED FOR THE ACCURACY OF THE DATA SHOWN. ASSESSOR'S PARCELS MAY NOT COMPLY WITH LOCAL SUBDIVISION OR BUILDING ORDINANCES.

12-6-78
INCAUS
SAN DIEGO COUNTY
ASSESSOR'S MAP
BOOK 186 PAGE 61 SHT 2 OF 2

186-61
SHT 2 OF 2



12/15/07 DEP

CHANGES

BLK	OLD	NEW	YR	CUT
612	982	1-17	79	10070
612	1-4-79	AC 2AL	79	5772
612	2-17	CHANGE	79	5772
612	7	18-20	82	2313
612	6	21-24	83	2642
612	5	25-28	84	3013
612	15	27-32	85	1319
612	4-4-87	83-36	88	1125
612	22-23	97-138	88	1636
612	13	SAFE & AC CHG	97	9533
612	25-28	39-42	00	1071
	37	438-44	05	1028
	378-38	438-44	05	1028
	98-14	45-48	08	1389

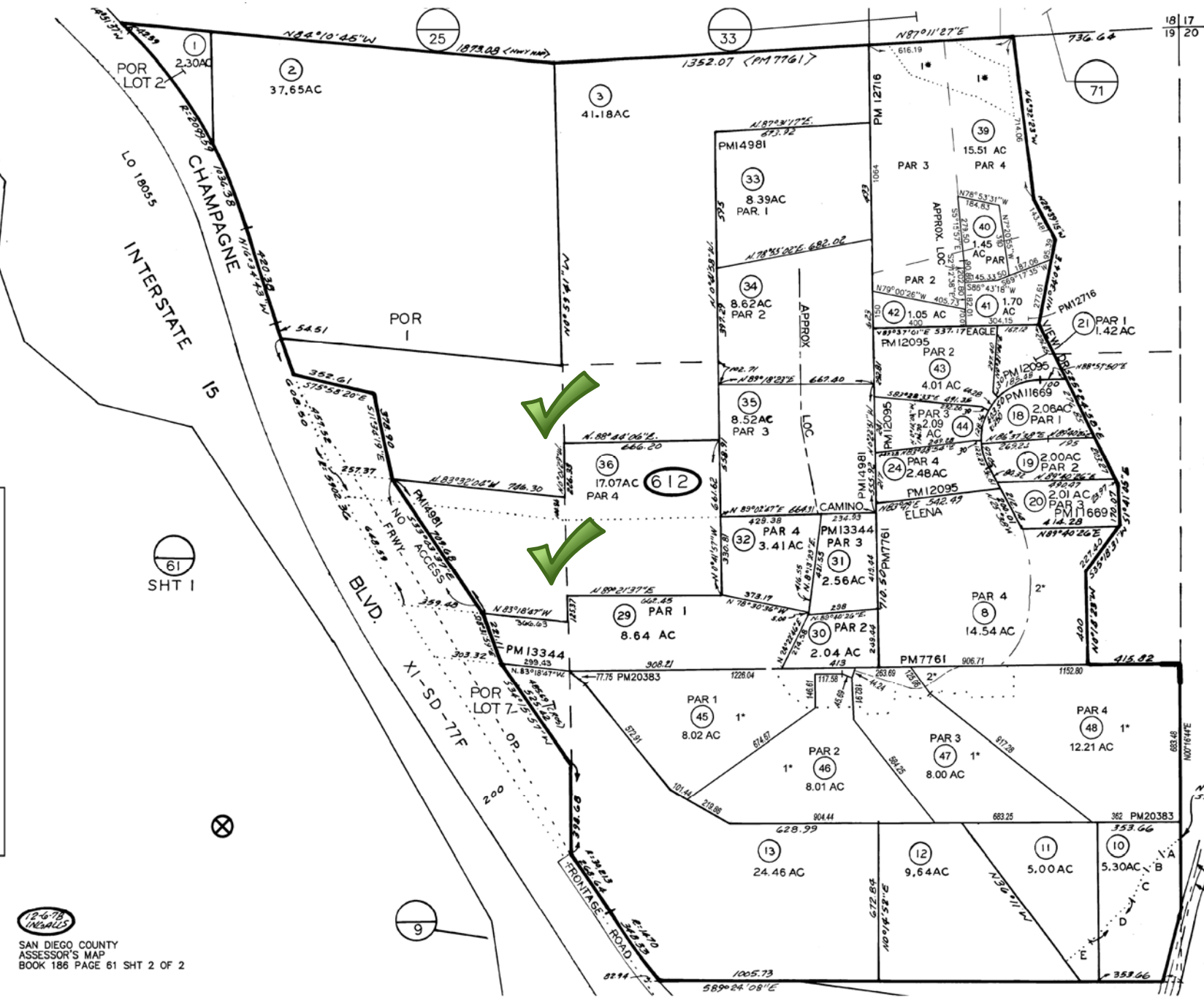
10
SHT 2

- 1* OPEN SPACE
- 2* APPROX LOC HIGH VISTA DR

- A - 558°59'30"W 100.63
- B - 548°50'30"W 90.51
- C - 528°09'20"W 145.21
- D - 543°20'38"W 250.81
- E - 582°39'14"W 130.99

N 1918.55 FT PR.
S.E. COR. SEC. 19
MOUNTAIN MEADOW
RD
C/L R.S. 603
C/L R.S. 603-66

SEC 19 - T11S - R2W - POR
ROS 8912, 15188



61
SHT 1

9

612

29

45

13

12

11

10

48

47

30

32

31

35

34

33

39

40

41

42

43

44

46

49

50

51

52

53

54

55

56

57

58

59

60

61

62

63

64

65

66

67

68

69

70

71

72

73

74

75

76

77

78

79

80

81

82

83

84

85

86

87

88

89

90

91

92

93

94

95

96

97

98

99

100