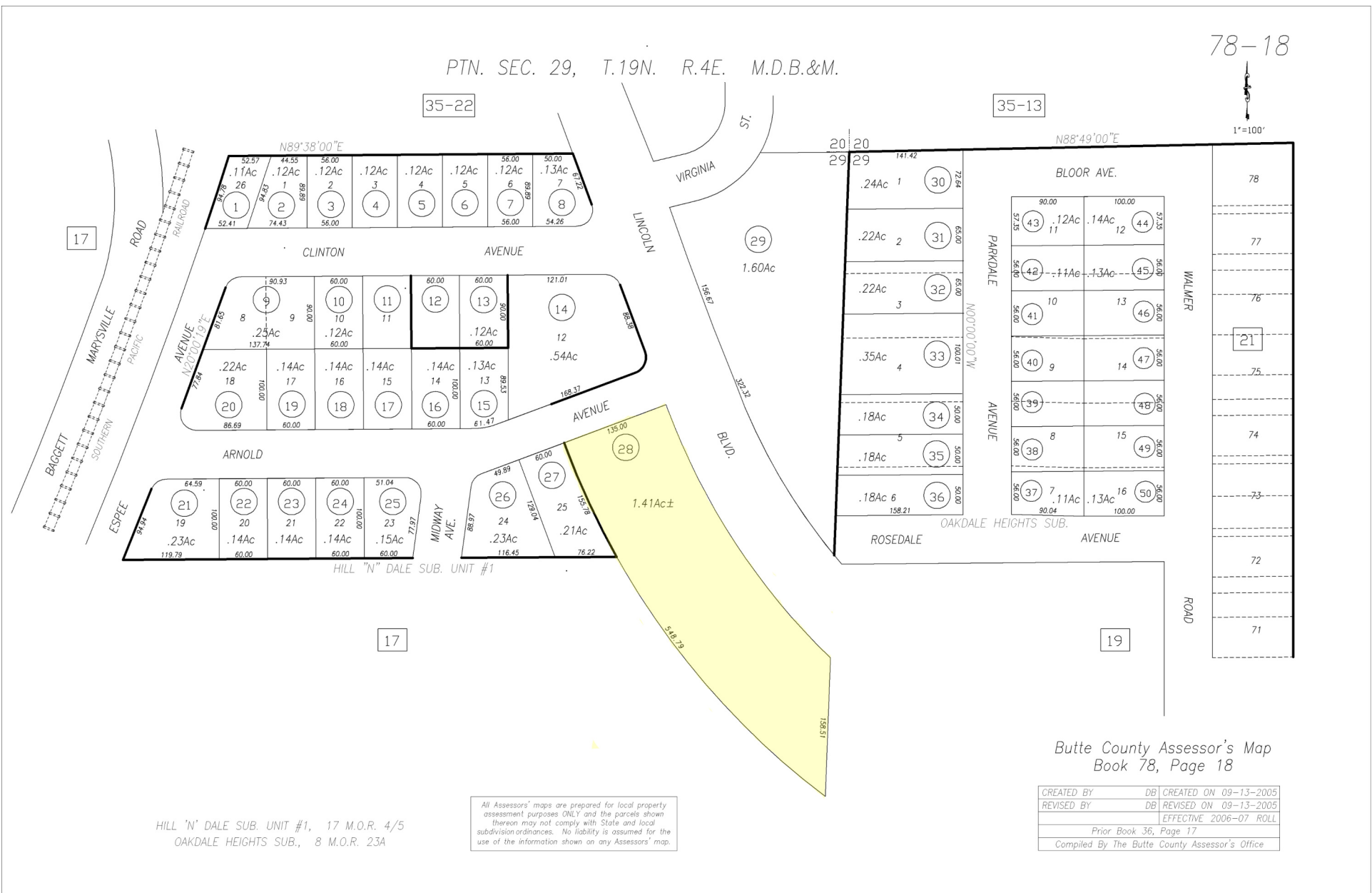


PTN. SEC. 29, T.19N. R.4E. M.D.B.&M.



1"=100'



35-22

35-13

17

17

19

HILL 'N' DALE SUB. UNIT #1, 17 M.O.R. 4/5
OAKDALE HEIGHTS SUB., 8 M.O.R. 23A

All Assessors' maps are prepared for local property assessment purposes ONLY and the parcels shown thereon may not comply with State and local subdivision ordinances. No liability is assumed for the use of the information shown on any Assessors' map.

Butte County Assessor's Map
Book 78, Page 18

CREATED BY	DB	CREATED ON	09-13-2005
REVISED BY	DB	REVISED ON	09-13-2005
		EFFECTIVE	2006-07 ROLL
		Prior Book	36, Page 17
Compiled By The Butte County Assessor's Office			