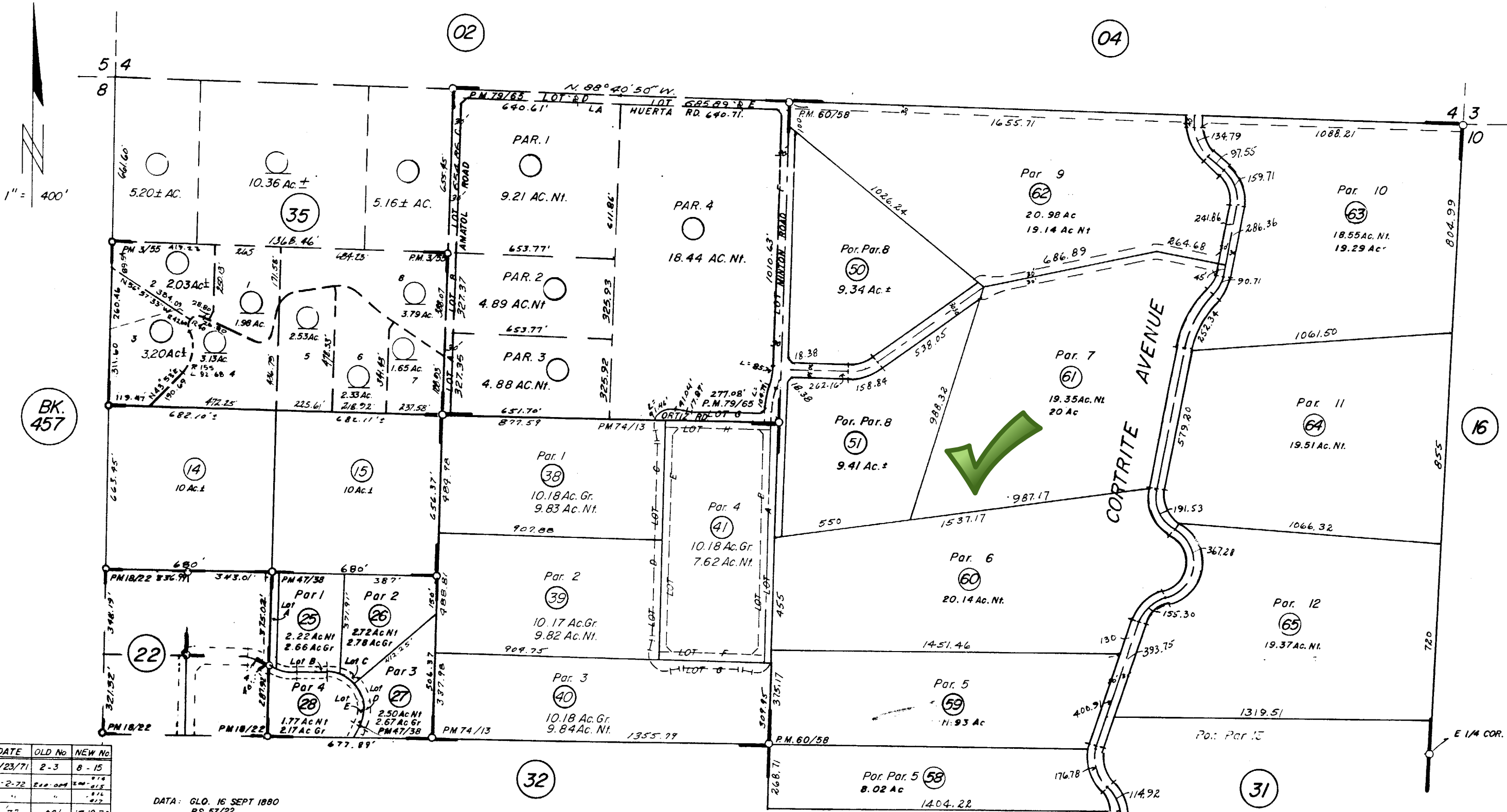


THIS MAP IS FOR  
ASSESSMENT PURPOSES ONLY



BK. 457

DATE	OLD NO.	NEW NO.
5/81	43	47, TST
"	44	48, TST
"	45	49, TST
8/82	32	50, 51, 52
1/86	02	54, 55
"	13	52, 53
"	53, 54	56
"	52, 55	57
"	56, 57, 03	PG. 35
"	8-12, 18-20	"
"	46-49	"
7-92	29-31	59-61, 57
"	33-37	62-65, 57

DATE	OLD No.	NEW No.
7/23/71	2-3	8-15
3-2-72	200-004	200-015
"	"	200-016
"	"	200-017
3-72	001	18, 19, 20
3-76	16	21-24
6/77	21-24	25-28
5/78	17	25-28
3/79	7	29-36
"	"	180-62
1/80	5	38-41
7/80	6	42-45
5/81	42	46, TST

DATA: GLO. 16 SEPT 1880  
RS 57/22  
RS 66/6

JULY 1971

P.M. 3/55  
P.M. 47/38 Parcel Map 9812  
" 60/58-61 " " 11367  
P.M. 79/65 Parcel Map 13701  
P.M. 74/13 Parcel Map No. 13243