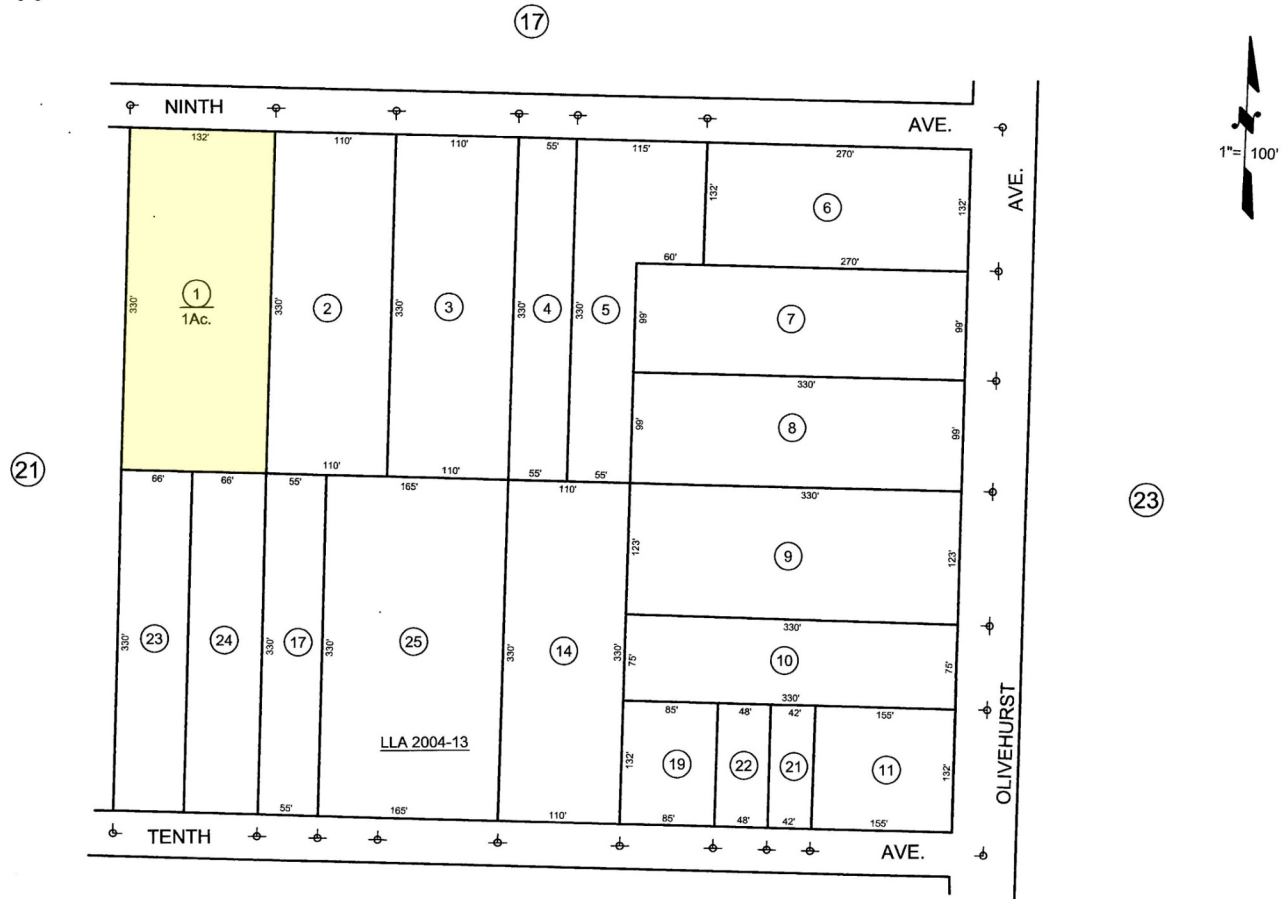


NOTE: This map was prepared for assessment purposes only, and is not intended to illustrate legal building sites or establish precedence over local ordinances. Official information concerning size or use of any parcel should be obtained from recorded documents and local governing agencies.

E. 1/2 LOT 35, OLIVEHURST TRACT

Tax Area Code
64-138

13-22



R.S. - Bk. 2, Pg. 5 (LLA 2004-13)

NOTE - Assessor's Block Numbers Shown in Ellipses
Assessor's Parcel Numbers Shown in Circles

Assessor's Map Bk.13, Pg.22
County of Yuba, Calif.

JAN 10 2005