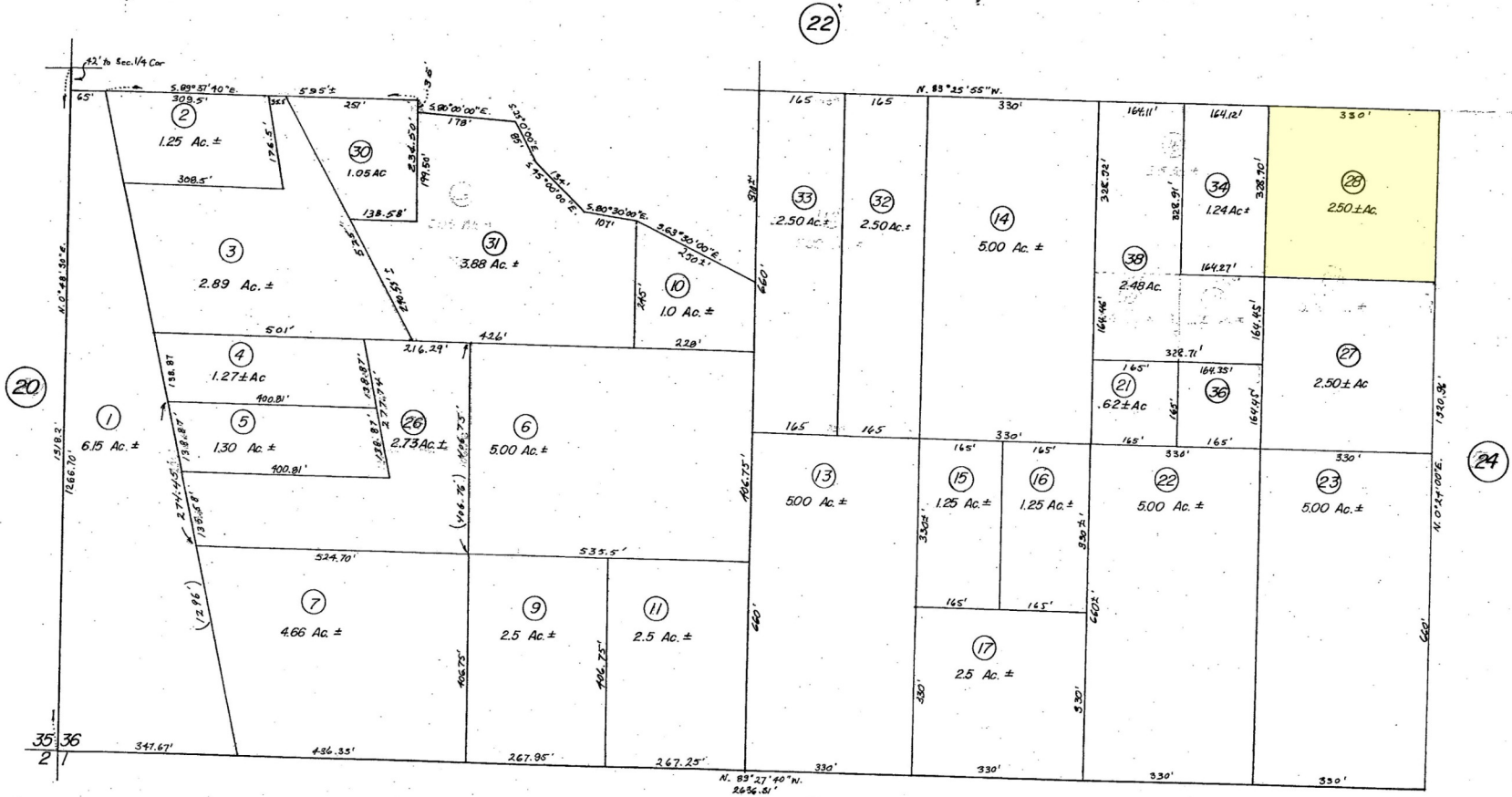


THIS MAP IS FOR
ASSESSMENT PURPOSES ONLY

POR. S.1/2 SW 1/4 SEC. 36, T.4S. R.6W.

T. R. A. 059-099 283-23 ¹⁰⁻⁴⁴

FEB 14 2006



DATA: RS. 04/03, RS. 12/76
R.S. 68/1
C.C. 2774

ASSESSOR'S MAP BK. 283 PG. 23
RIVERSIDE COUNTY, CALIF.

DATE	OLD NO.	NEW NO.
1/19/74	025	026
3/77	24	27-28
2-78	8	29, 30
1/82	29	31
4/88	12	32, 33
1/06	18	34-35
"	20	36-37
"	19, 35, 37	38

FEB 9 2006