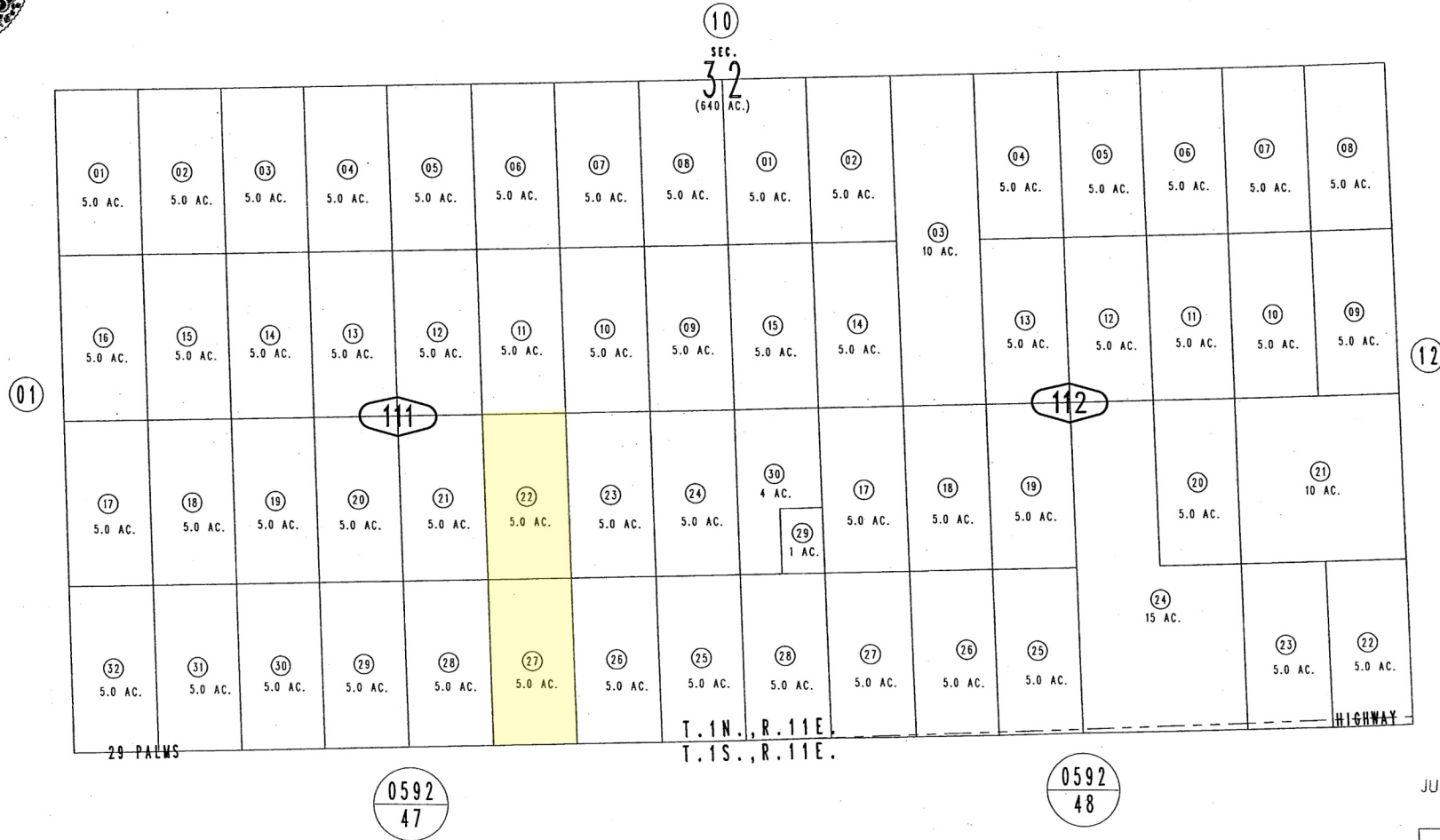
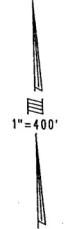


THIS MAP IS FOR THE PURPOSE
OF AD VALOREM TAXATION ONLY.

S.1/2 Sec.32, T.1N.,R.11E., S.B.B.&M.

Morongo Unified
Tax Rate Area
94095

0628-11



March 2005

Assessor's Map
Book 0628 Page 11
San Bernardino County

JUN 07 2005

REVISED