

777-42  
777-08

T.R.A. 020-160

POR. SE 9 T. 6S., R. 7E  
CITY OF LA QUINTA

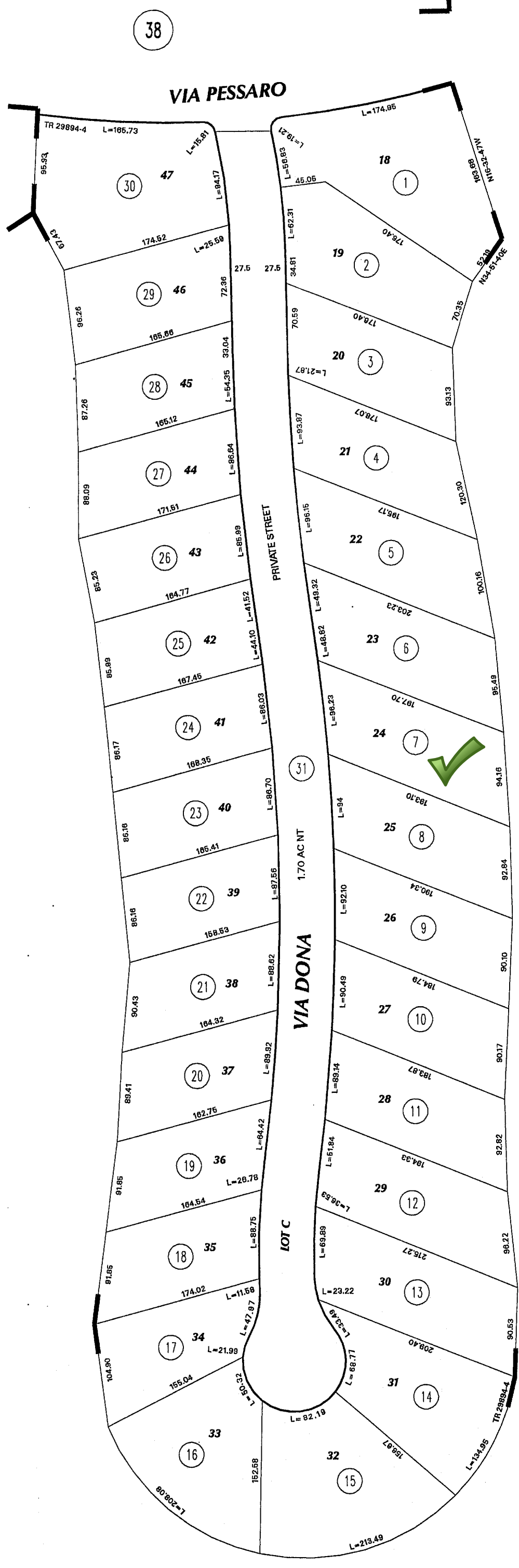
THIS MAP WAS PREPARED FOR ASSESSMENT PURPOSES ONLY. NO LIABILITY IS ASSUMED FOR THE ACCURACY OF THE DATA SHOWN. ASSESSOR'S PARCEL MAY NOT COMPLY WITH LOCAL LOT-SPLIT OR BUILDING SITE ORDINANCES.

NOV 24 2004

1" = 100'  
ANGLE = -90



08



38

39

08

DEC 02 2004

MB 351/49-57 TRACT MAP NO. 29894-4

ASSESSOR'S MAP BK777 PG. 42  
Riverside County, Calif.

8709

Oct 2004