

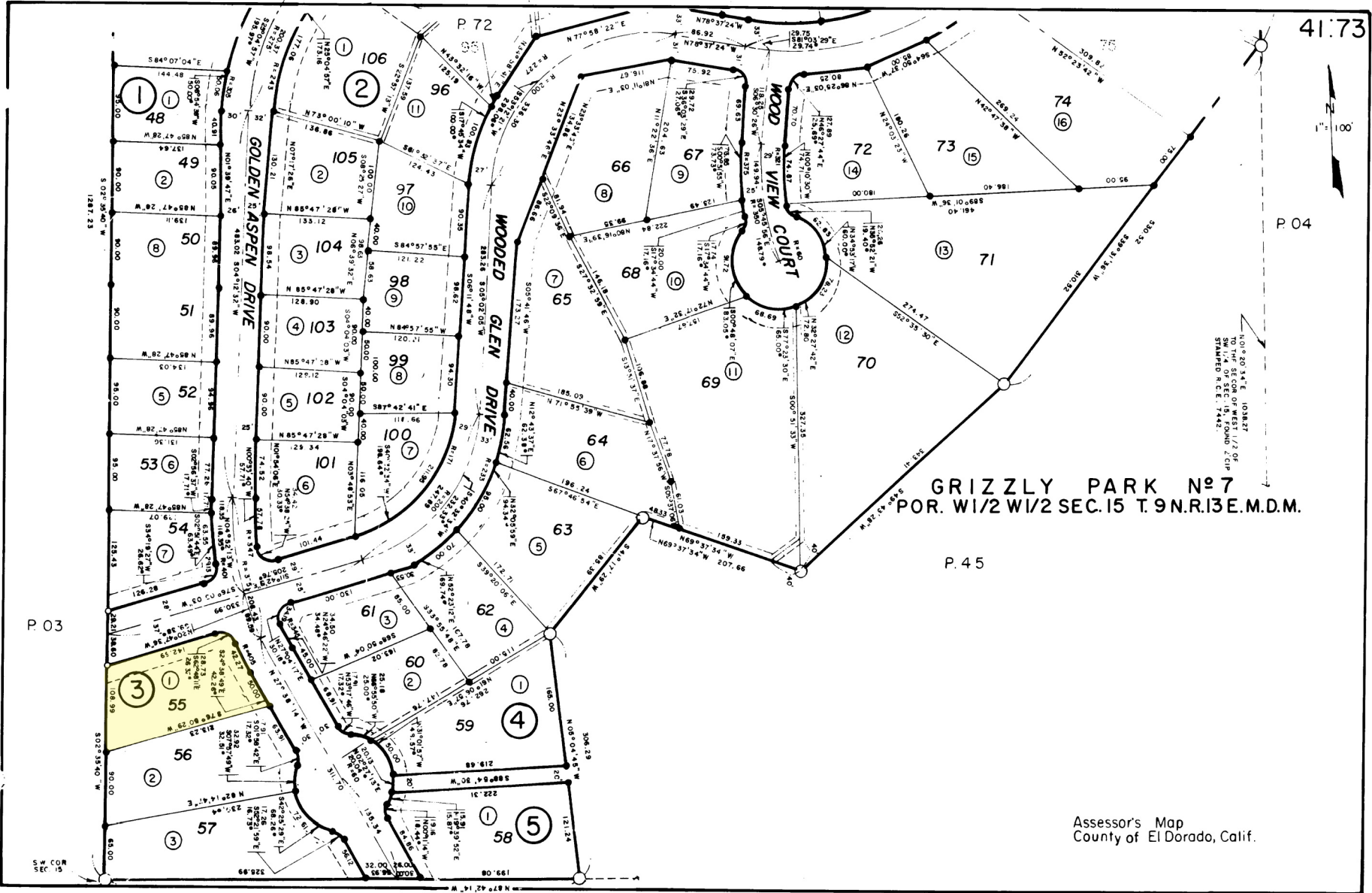
P. 04

1.01° 00' 14"E, 103.827'
TO THE SE CORNER OF WEST 1/2 OF
SW 1/4 OF SEC. 15, FOUND L.O.P.
STAMPED N.C.E. 1742.

GRIZZLY PARK No 7 POR. W1/2 W1/2 SEC. 15 T. 9 N. R. 13 E. M.D.M.

P. 45

Assessor's Map
County of El Dorado, Calif.



P. 03

P. 04

00266

S.W. COR
SEC. 15