

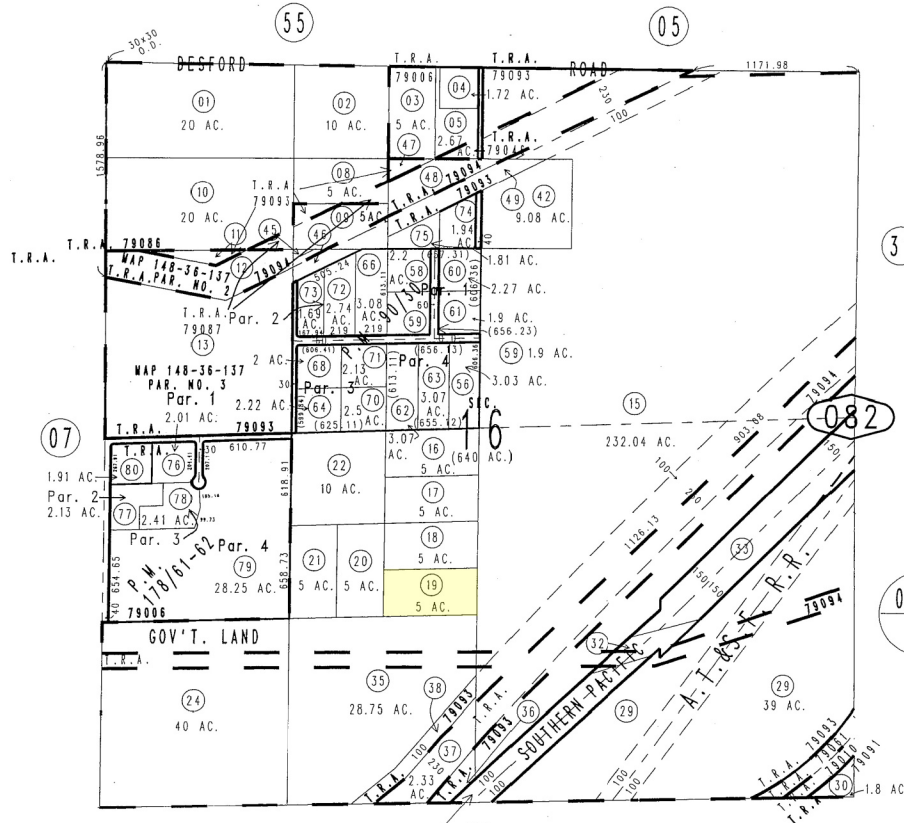
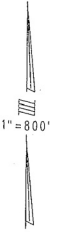
THIS MAP IS FOR THE PURPOSE
OF AD VALOREM TAXATION ONLY.



Sec.16, T.3N.,R.5W., S.B.B.&M.

Hesperia Unified
Tax Rate Area
79006 79010 79046
79091 79086 79087
79091 79093 79094

0357-08



31

082

0405
18

1
SEC.
15
(640 AC.)

- NOTE.
- 32 WAP 872-36-48F PAR. NO. 32
 - 11 WAP 148-36-137 PAR. NO. 1
 - 33 WAP 872-36-48F PAR. NO. 33

MAP 872-36-48F
PAR. NO. 31

- 37- WAP 148-36-179 PAR. NO. 18
- 38- WAP 148-36-179 PAR. NO. 17
- 45- WAP 148-36-192 PAR. NO. 18
- 46- WAP 148-36-192 PAR. NO. 19
- 47- WAP 148-36-192 PAR. NO. 15
- 48- WAP 148-36-192 PAR. NO. 17
- 49- WAP 148-36-192 PAR. NO. 16

OCT 07 2010

REVISED
09/20/10 GL

Parcel Map No. 14365, P.M. 178/61-62
Parcel Map No. 8380, P.M. 90/30

Assessor's Map
Book 0357 Page 08
San Bernardino County