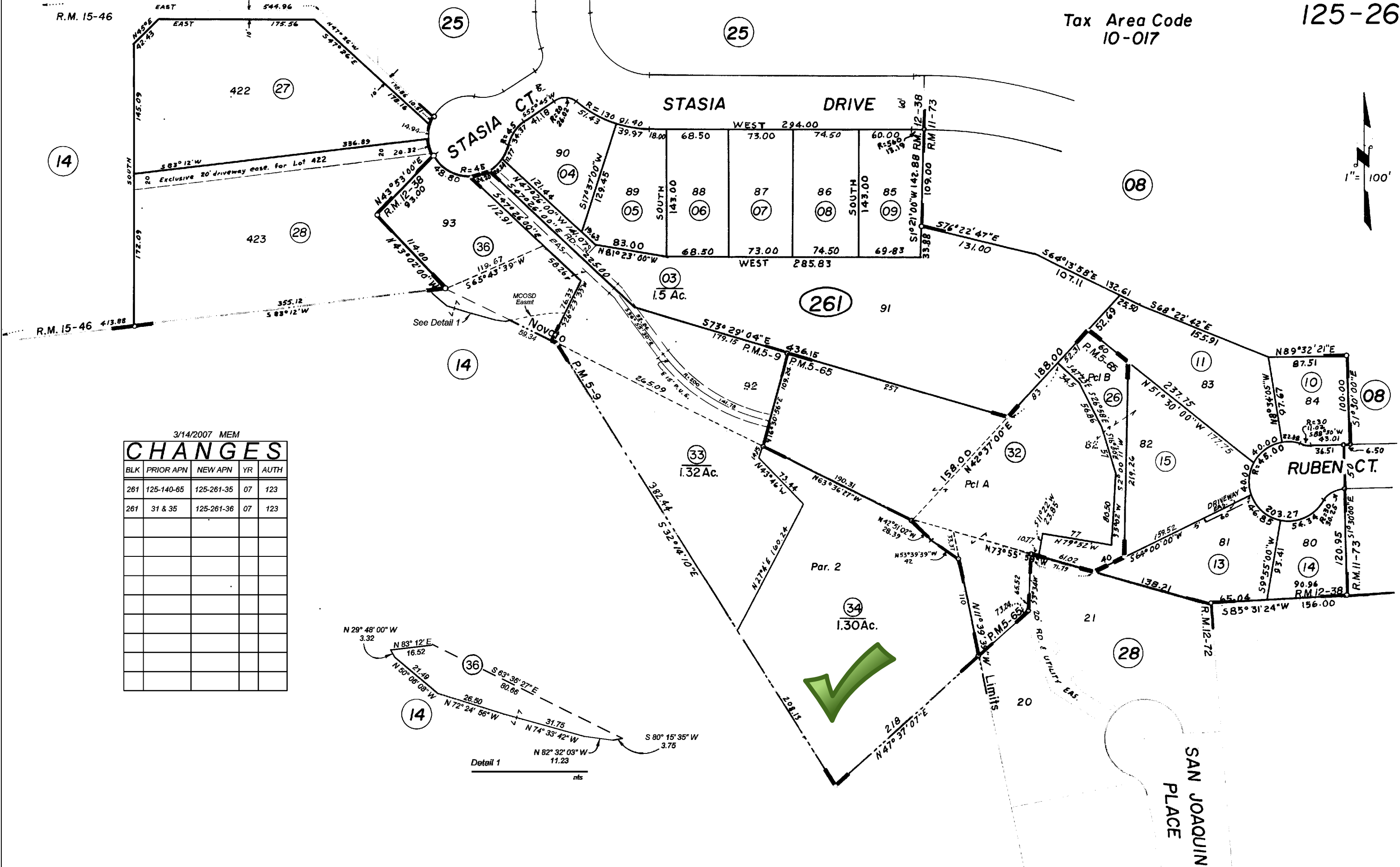


THIS MAP WAS PREPARED FOR ASSESSMENT PURPOSES ONLY. NO LIABILITY IS ASSUMED FOR THE ACCURACY OF THE DATA SHOWN. ASSESSOR'S PARCELS MAY NOT COMPLY WITH LOCAL SUBDIVISION OR BUILDING ORDINANCES.

R.M. 15-46

Tax Area Code  
10-017

125-26



3/14/2007 MEM

### CHANGES

BLK	PRIOR APN	NEW APN	YR	AUTH
261	125-140-65	125-261-35	07	123
261	31 & 35	125-261-36	07	123

NOTE - Assessor's Block Numbers Shown in Ellipses  
Assessor's Parcel Numbers Shown in Circles