

09 3E 29CB

SEE MAP 093E30

SEE MAP 093E29

40

# 09 3E 29CB MILL CITY



MARION COUNTY, OREGON  
NW1/4 SW1/4 SEC29 T9S R3E W.M.  
SCALE 1" = 100'

### LEGEND

- Line Types:
  - Taxlot Boundary
  - Road Right-of-Way
  - Railroad Right-of-Way
  - Private Road ROW
  - Subdivision/Plat Bndry
  - Waterline - Taxlot Bndry
  - Historical Boundary
  - Easement
  - Railroad Centerline
  - Taxcode Line
  - Map Boundary
  - Waterline - Non Bndry

- Corner Types:
  - + 1/16TH Section Cor.
  - ⊙ D/LC Corner
  - ⊕ 1/4 Section Cor.
  - 16 15 Section Corner
  - 21 22

NUMBERS  
Tax Code Number  
**000 00 00 0**  
Acreage All acres listed are Net Acres, excluding any portions of the taxlot within public ROW's

NOTES  
Tick Marks: A tick mark in the road indicates that the labeled dimension extends into the public ROW



### CANCELLED NUMBERS

400
500
700
1700
1800
1900
1901
2100
2101
2102
2301A1
2800

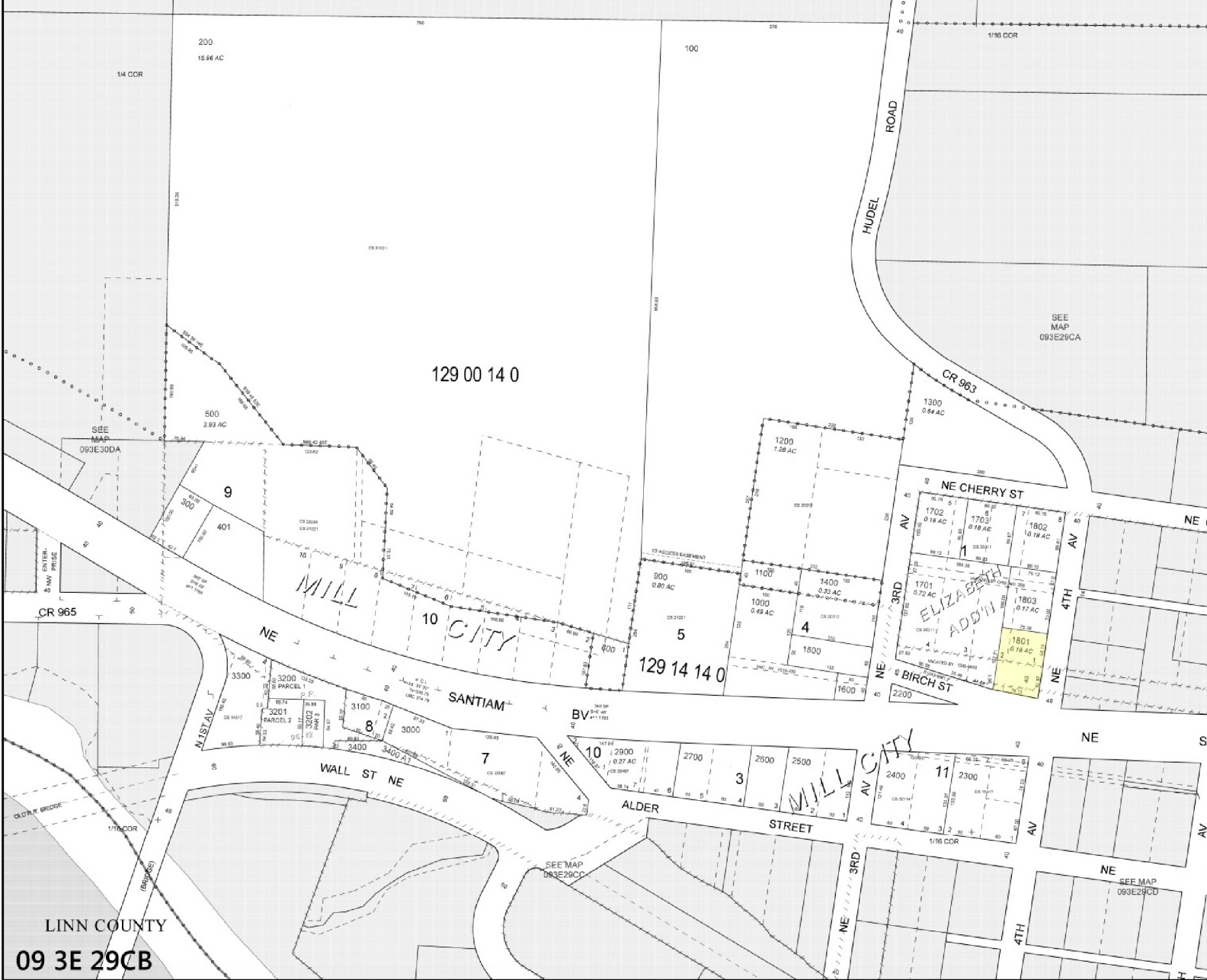
DISCLAIMER: THIS MAP WAS PREPARED FOR ASSESSMENT PURPOSES ONLY



FOR ADDITIONAL MAPS VISIT OUR WEBSITE AT [www.co.marion.or.us](http://www.co.marion.or.us)

PLOT DATE: 1/24/2018

## MILL CITY 09 3E 29CB



129 00 14 0

129 14 14 0

LINN COUNTY

09 3E 29CB