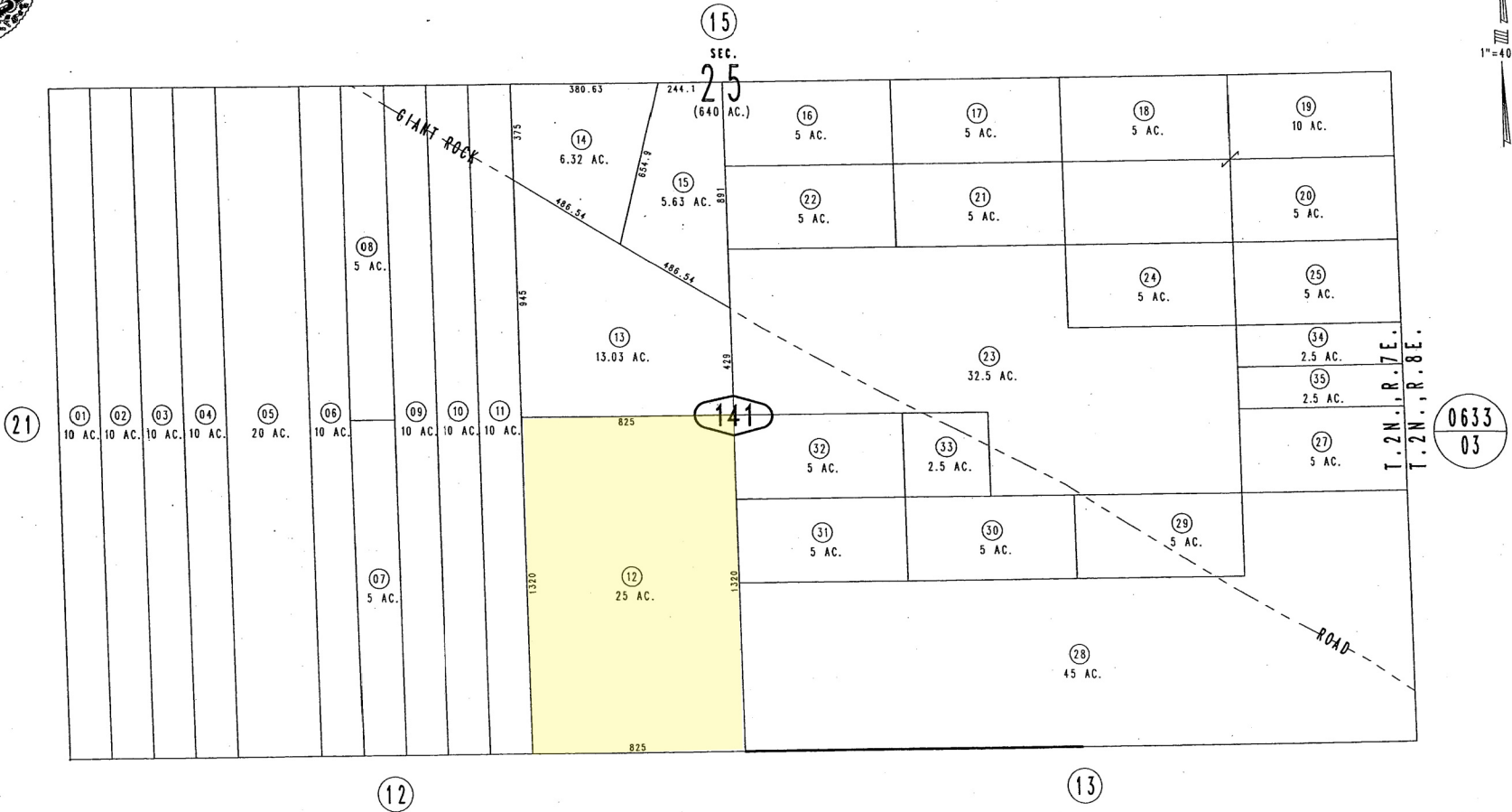
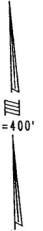


THIS MAP IS FOR THE PURPOSE  
OF AD VALOREM TAXATION ONLY.

S.1/2 Sec.25, T.2N.,R.7E., S.B.B.&M.

Morongo Unified  
Tax Rate Area  
94042

0632-14



March 2005

JUN 07 2005

REVISED

Assessor's Map  
Book 0632 Page 14  
San Bernardino County

0633  
03