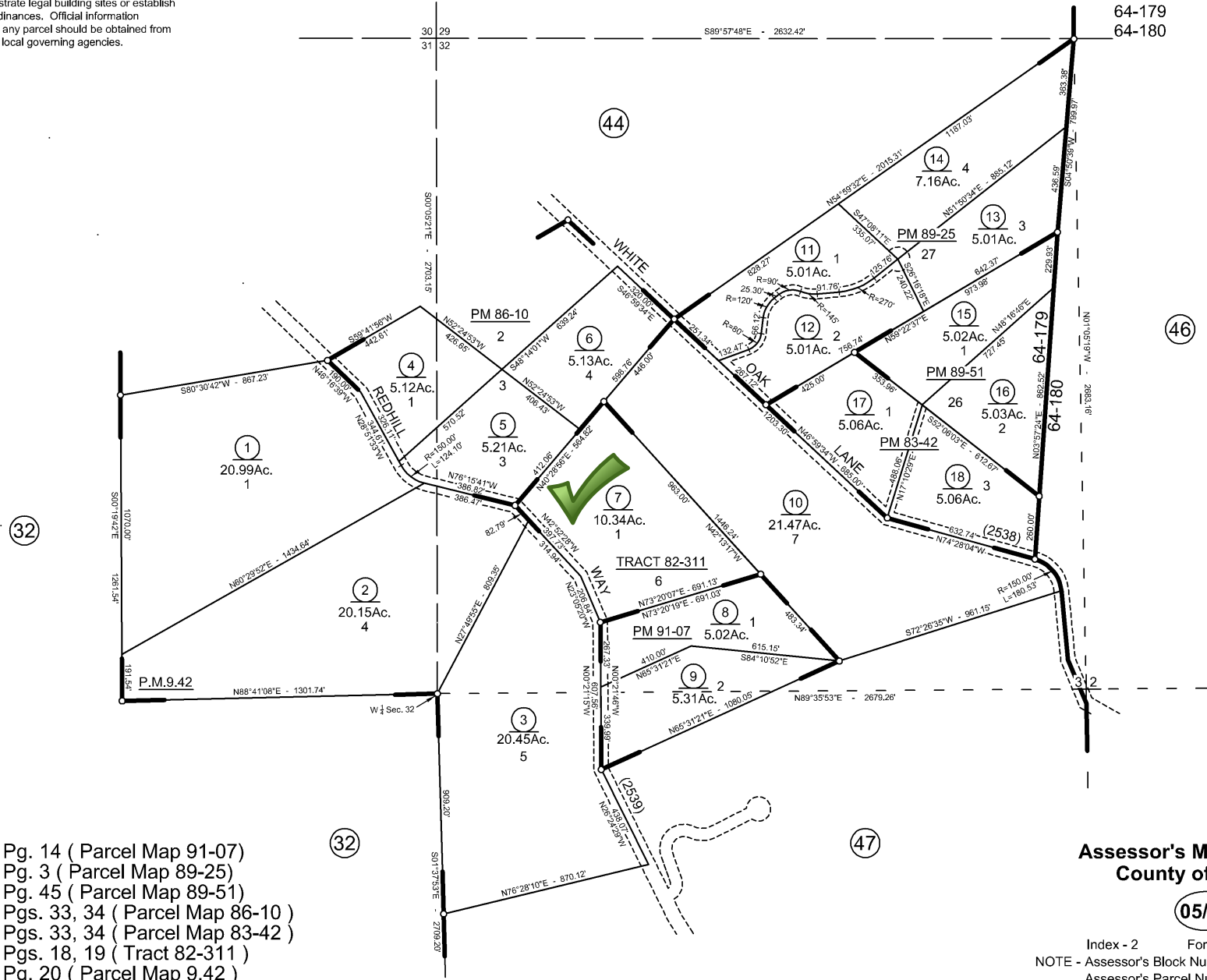
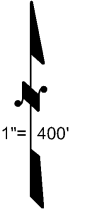


NOTE: This map was prepared for assessment purposes only, and is not intended to illustrate legal building sites or establish precedence over local ordinances. Official information concerning size or use of any parcel should be obtained from recorded documents and local governing agencies.

PORTION SECTION 31 & 32, T.17N., R.6E., M. D. B. & M.

Tax Area Code
64-179
64-180

44-45



- R.S. - Bk. 60, Pg. 14 (Parcel Map 91-07)
- R.S. - Bk. 52, Pg. 3 (Parcel Map 89-25)
- R.S. - Bk. 51, Pg. 45 (Parcel Map 89-51)
- R.S. - Bk. 45, Pgs. 33, 34 (Parcel Map 86-10)
- R.S. - Bk. 43, Pgs. 33, 34 (Parcel Map 83-42)
- R.S. - Bk. 40, Pgs. 18, 19 (Tract 82-311)
- R.S. - Bk. 31, Pg. 20 (Parcel Map 9.42)

Assessor's Map Bk.44, Pg. 45
County of Yuba, Calif.

05/08

Index - 2 Formerly Ptn. 044-34
NOTE - Assessor's Block Numbers Shown in Ellipses
Assessor's Parcel Numbers Shown in Circles