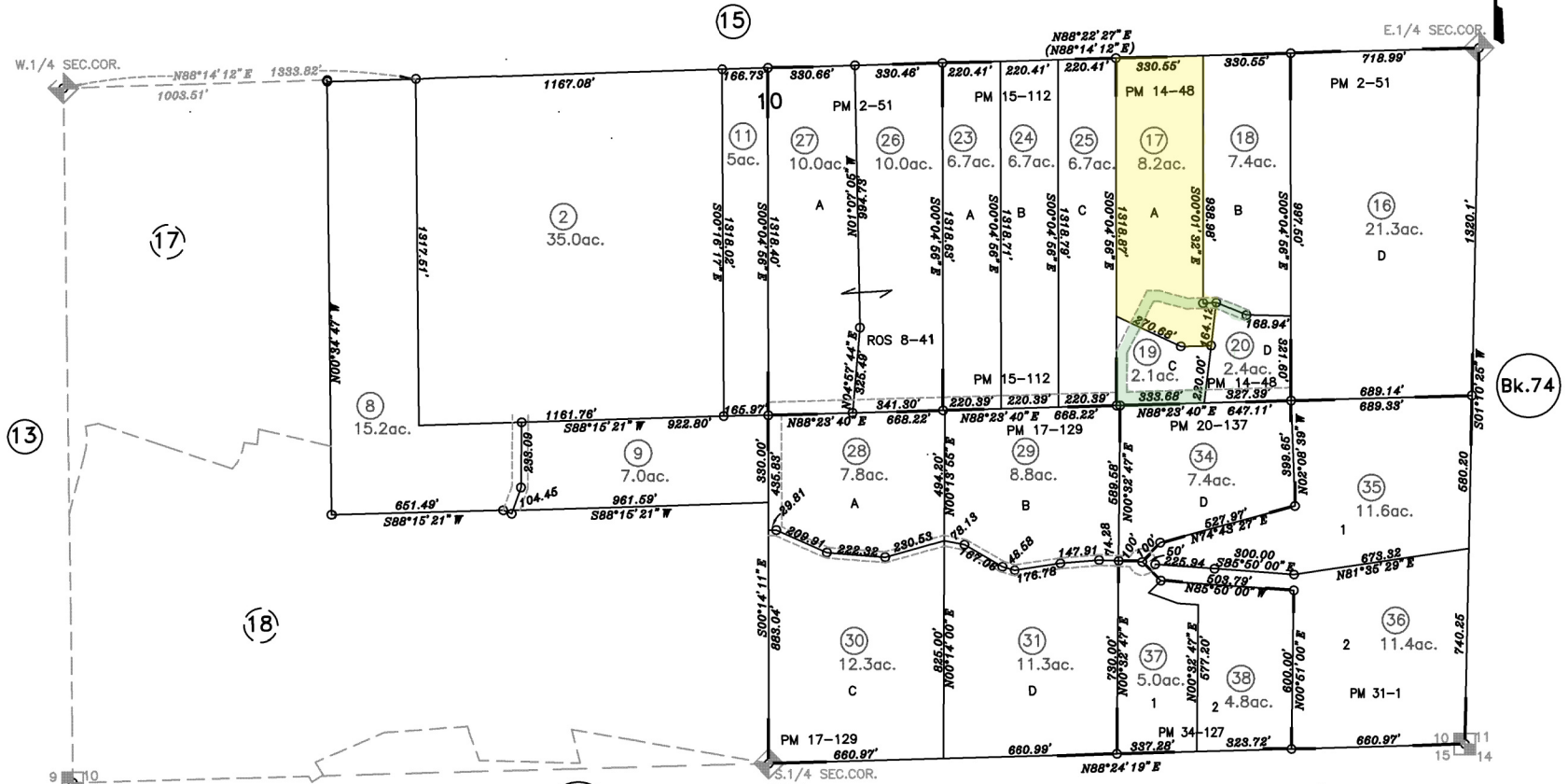
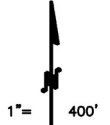


POR. S. 1/2 SEC. 10, T.13N., R.8E., M.D.B.&M.

Survey M.O.R. Bk. 1, Pg. 87
 Parcel M.O.R. Bk. 2, Pg. 51
 Survey M.O.R. Bk. 5, Pg. 69
 Parcel M.O.R. Bk. 20, Pg. 137, P-73976
 Parcel M.O.R. Bk. 17, Pg. 129, 73590

Survey M.O.R. Bk. 8, Pg. 41
 Parcel M.O.R. Bk. 15, Pg. 112, 73144
 Parcel M.O.R. Bk. 14, Pg. 156, 73330
 Parcel M.O.R. Bk. 14, Pg. 48, 72391
 Parcel M.O.R. Bk. 31, Pg. 1, No. 75805
 Parcel M.O.R. Bk. 34, Pg. 127, DPM 20070389



NOTE
 This map was prepared for assessment purposes only, and is not intended to illustrate legal building sites or establish precedence over local ordinances. Official information concerning size or use of any parcel should be obtained from recorded documents and local governing agencies.

Assessor's Map Bk.75 Pg.14
 County of Placer, Calif.
 NOTE
 Assessor's Block Numbers Shown in Ellipses.
 Assessor's Parcel Numbers Shown in Circles.