

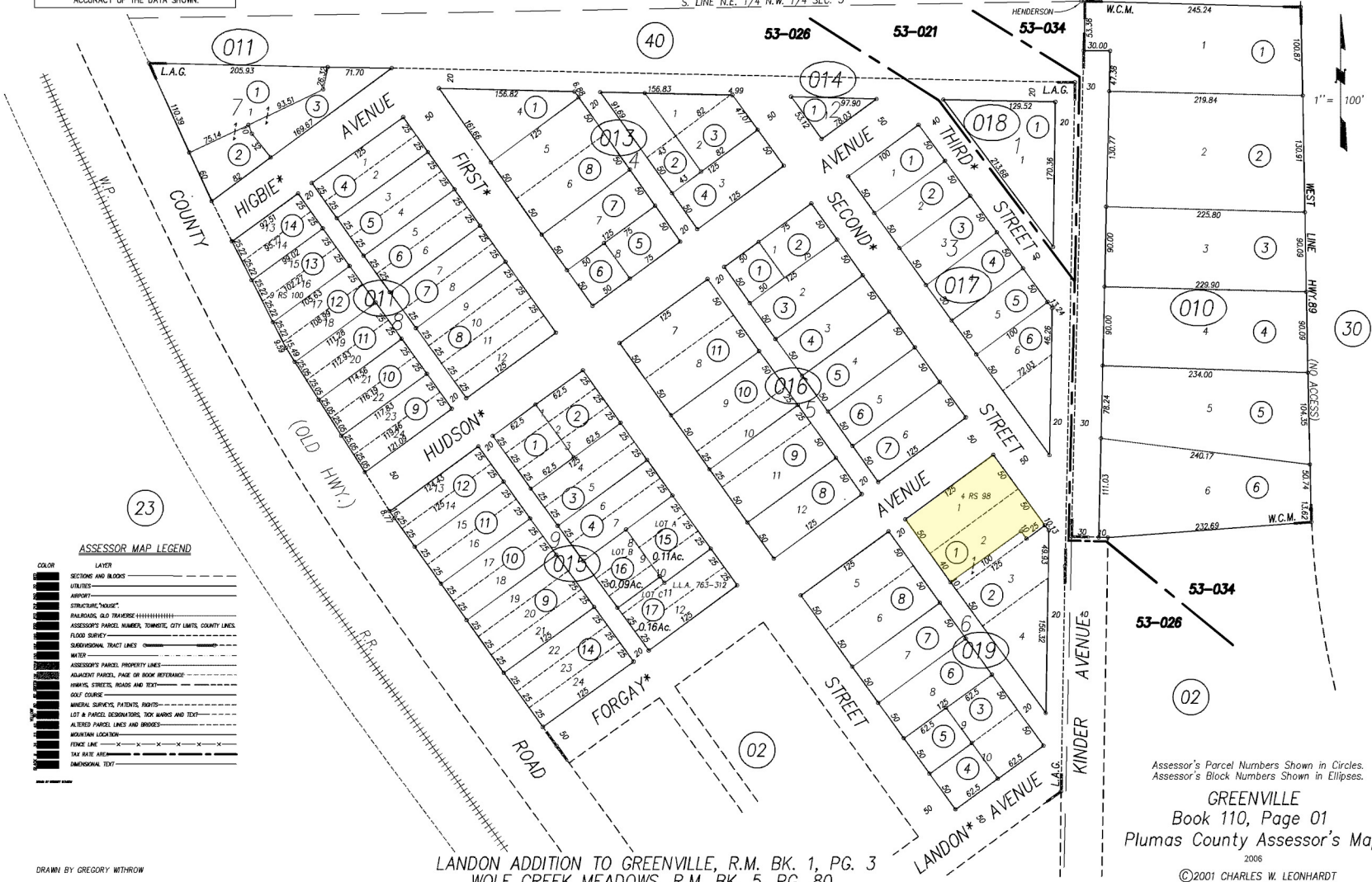
NOTE: ALL INFORMATION SHOWN ON ASSESSOR PARCEL MAPS ARE FOR ASSESSOR'S OFFICE USE AND DO NOT NECESSARILY CONSTITUTE LEGAL LOTS. NO LIABILITY IS ASSUMED FOR THE ACCURACY OF THE DATA SHOWN.

POR. SEC. 3 T. 26 N., R. 9 E., M.D.B.&M.

Tax Rate Area
53-021 53-26
53-034 1.07 BROWN

110-01

S. LINE N.E. 1/4 N.W. 1/4 SEC. 3



ASSESSOR MAP LEGEND

COLOR	LAYER
[Solid Black]	SECTIONS AND BLOCKS
[Dotted]	UTILITIES
[Thin Dashed]	ADIRIFT
[Thick Dashed]	STRUCTURAL "HOUSE"
[Dotted]	RAILROADS, OLD TRAILWISE
[Thin Dashed]	ASSESSOR'S PARCELS, NUMBER, TOWNSHIP, CITY LIMITS, COUNTY LINES
[Thin Dashed]	FLOOD SURVEY
[Thin Dashed]	SUBDIVISION TRACT LINES
[Thin Dashed]	WATER
[Thin Dashed]	ASSESSOR'S PARCELS, PROPERTY LINES
[Thin Dashed]	ADJACENT PARCELS, FACE OR REAR BOUNDARY
[Thin Dashed]	HIGHWAY, STREETS, ROADS AND TEXT
[Thin Dashed]	GOLF COURSE
[Thin Dashed]	MINEING SURVEYS, PATENTS, RIGHTS
[Thin Dashed]	LOT & PARCELS IDENTIFIERS, TOP MARKS AND TEXT
[Thin Dashed]	ALTERED PARCEL LINES AND BRIDGES
[Thin Dashed]	MOUNTAIN LOCATION
[Thin Dashed]	FENCE LINE
[Thin Dashed]	TAX RATE AREA
[Thin Dashed]	DIMENSIONAL TEXT

DRAWN BY GREGORY WITTHROW

LONDON ADDITION TO GREENVILLE, R.M. BK. 1, PG. 3
WOLF CREEK MEADOWS, R.M. BK. 5, PG. 80

Assessor's Parcel Numbers in Circles.
Assessor's Block Numbers Shown in Ellipses.
GREENVILLE
Book 110, Page 01
Plumas County Assessor's Map
2006
©2001 CHARLES W. LEONHARDT