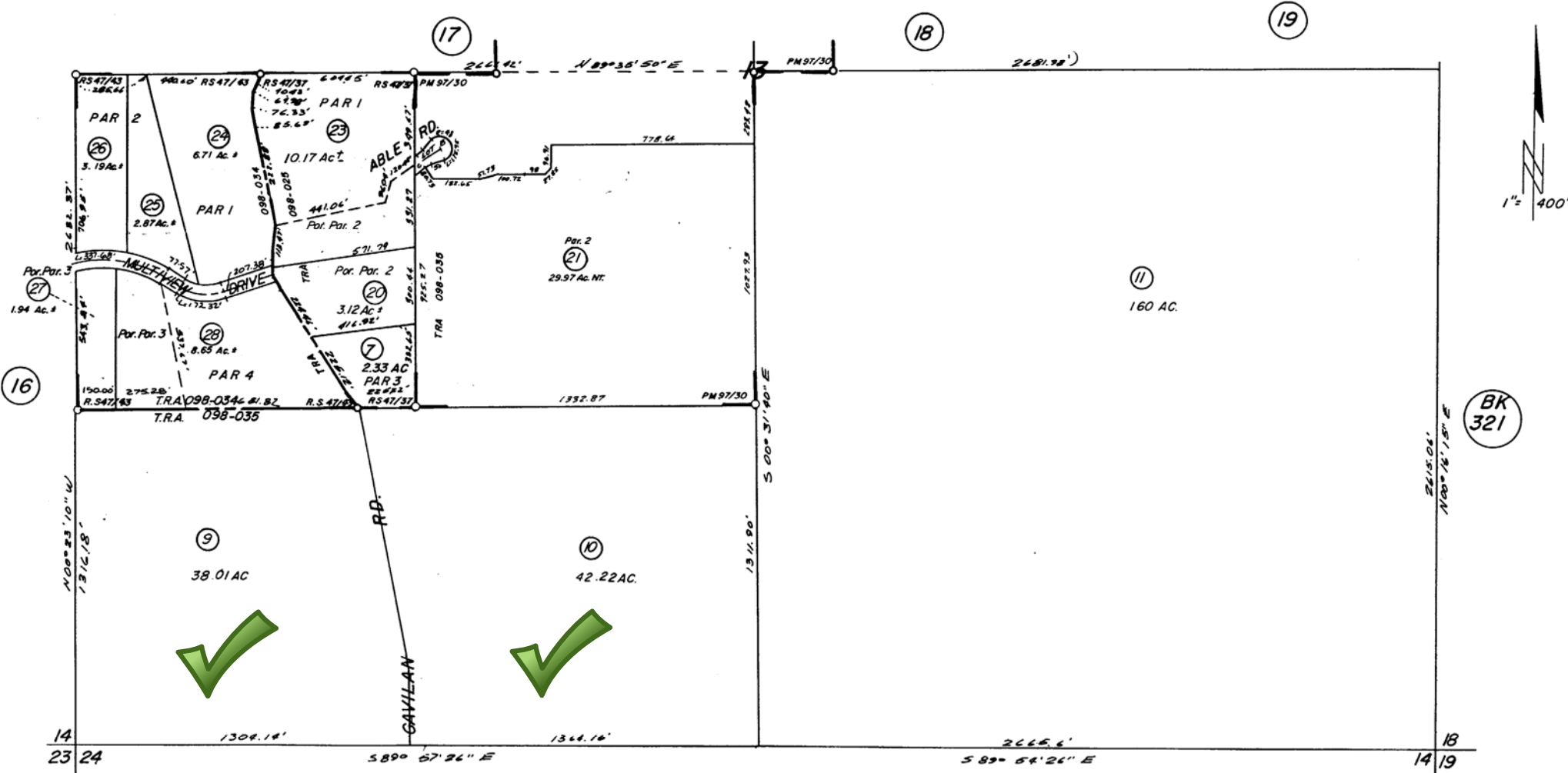


THIS MAP IS FOR
ASSESSMENT PURPOSES ONLY.

51/2 SEC.13 T.4S.R.5W
(POR. RO. EL SOBRANTE DE SAN JACINTO)

T.R.A. 098-035
098-025
098-034

287-20
10-18



DATA: R.S. 6/55
R.S. 36/93
R.S. 37/10
R.S. 56/12
M.B. 1/8 S.B.
P.M. 15/45

ASSESSOR'S MAP BK. 287 PG 20
RIVERSIDE COUNTY CALIF.

R.S. 47/37
R.S. 47/43
P.M. 97/30 Parcel Map 16808

DATE	OLD NO.	NEW NO.
07/80	004	002, 013
9/80	1	14, 51
9/80	2	15, 51
9/80	3	16, 51
9/80	12	17, 51
9/80	13	18, 51
9/81	06	19, 20
11/81	8	21, 22
4-82	5, 19	23
3/83	22	170-9
6/90	14-18	24-28

AUG 1973