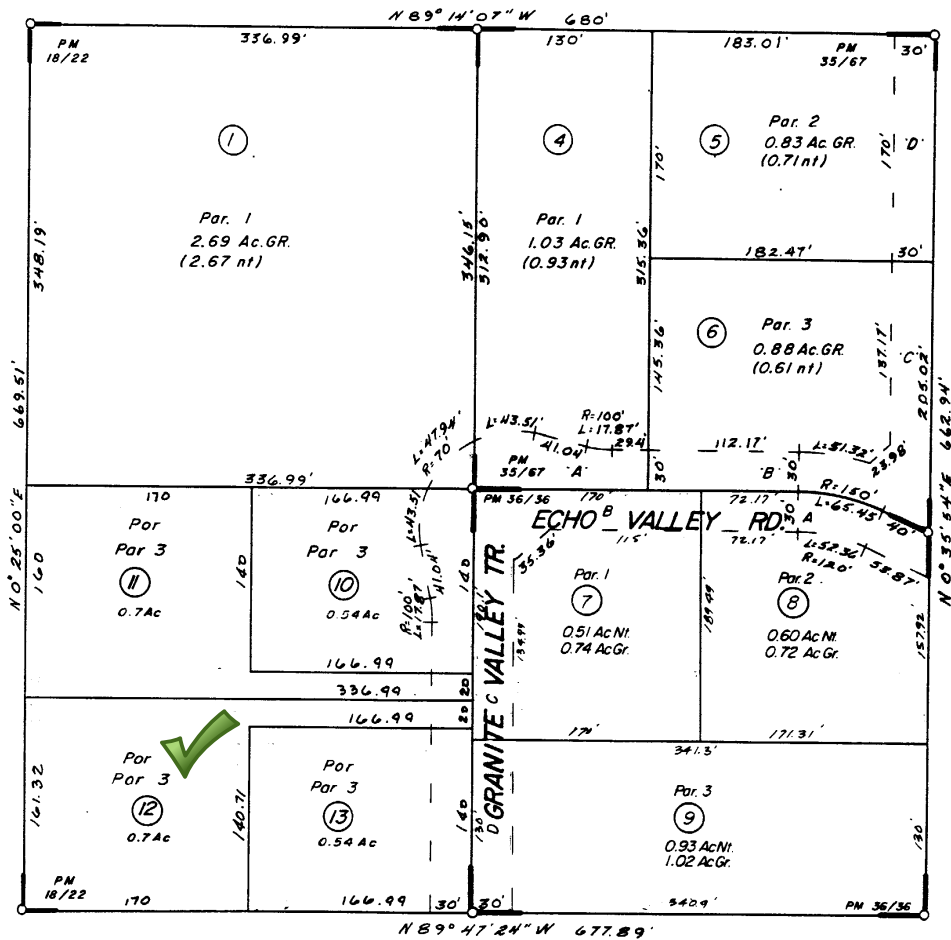


455-20
455-22

T. R. A. 8920

POR. NW 1/4 SEC. 9 T. 5 S., R. 2 W

THIS MAP IS FOR
ASSESSMENT PURPOSES ONLY



P.M. 18/22 Parcel Map No. 5350
P.M. 35/67 " " 8207
P.M. 36/36 " " 8209

(18)

DATA: COC 3197

[illegible]

JUN 1977 jss

ASSESSOR'S MAP BK. 455 PG. 22
RIVERSIDE COUNTY, CALIF.