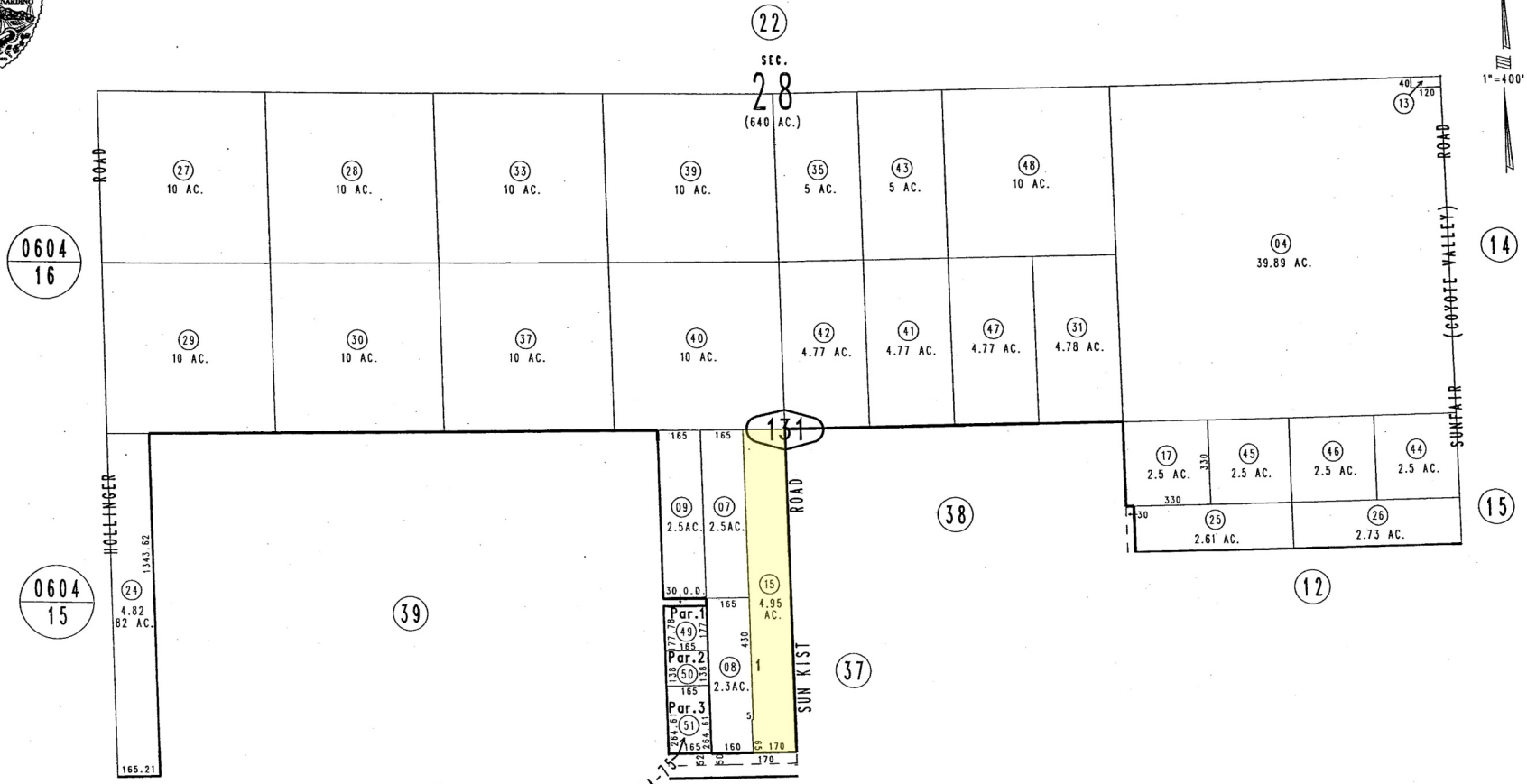


THIS MAP IS FOR THE PURPOSE
OF AD VALOREM TAXATION ONLY.

Ptn. S.1/2, Sec.28, T.1N.,R.7E., S.B.B.&M.

Morongo Unified
Tax Rate Area
94004

0607-13



P.M. 103/74-75

March 2005

Parcel Map No. 9270, P.M. 103/74-75

JUN 07 2005

REVISED

Assessor's Map
Book 0607 Page 13
San Bernardino County