

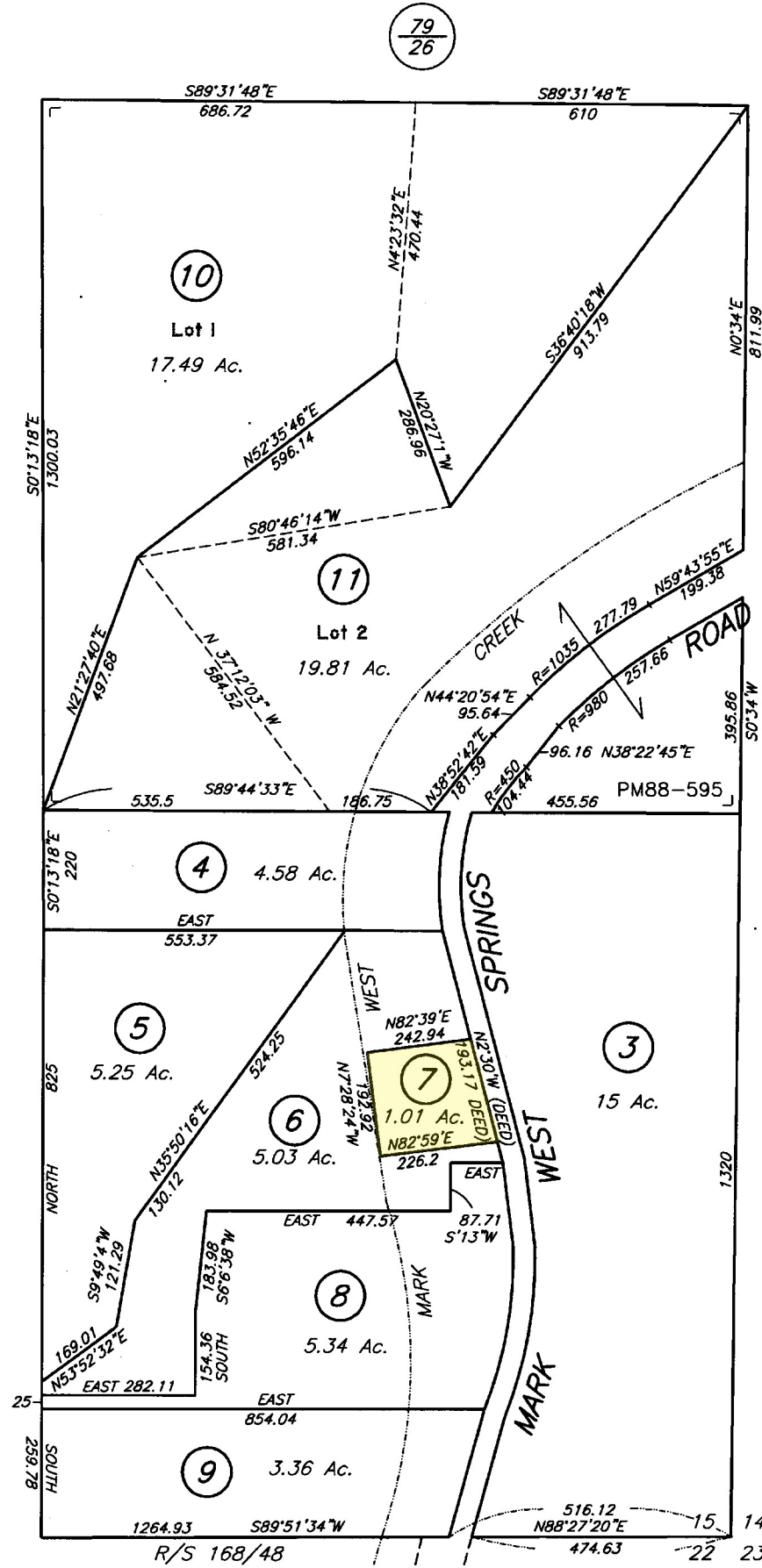
COUNTY ASSESSOR'S PARCEL MAP

TAX RATE AREA
179-032

79-29

CENTER
SEC. 15

PARCEL MAP NO. 88-595
REC. 2-15-91 IN BK. 471, MAPS, PGS. 45-47



SCALE: 1" = 300'

REVISED
4 -5 -05=9 - LSL
3 -21-06=11 - LSL

NOTE: This map was prepared for Assessment purposes only. No liability is assumed for the accuracy of the data delineated hereon.

NOTE: Assessor's parcels do not necessarily constitute legal lots. To verify legal parcel status, check with the appropriate city or county community development or planning division.

Assessor's Map Bk. 79, Pg. 29
Sonoma County, Calif. (ACAD)
KEY 4/5/05=9 LSL