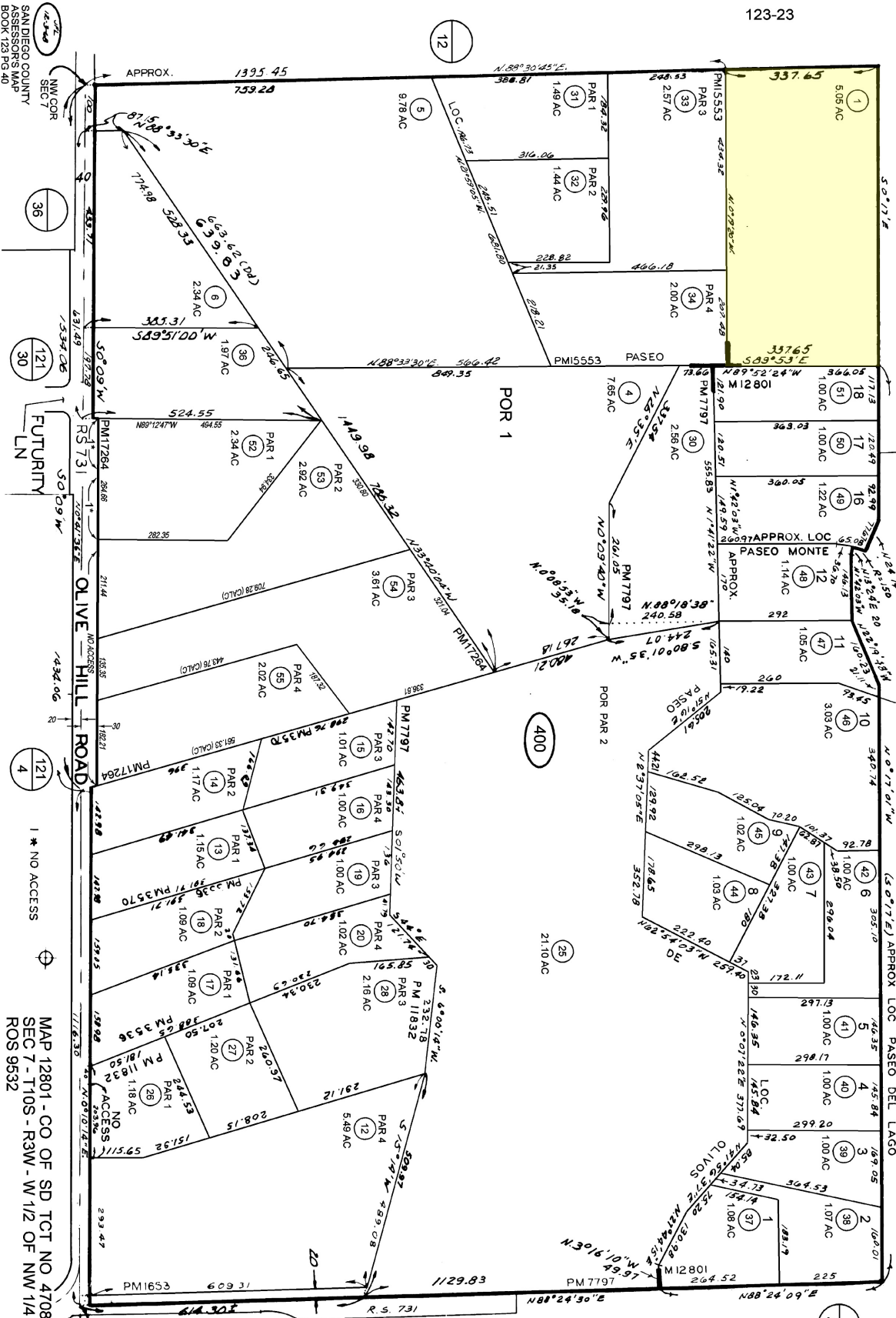


THIS MAP WAS PREPARED FOR ASSESSMENT PURPOSES ONLY. NO LIABILITY IS ASSUMED FOR THE ACCURACY OF THE DATA SHOWN. ASSESSOR'S PARCELS MAY NOT COMPLY WITH LOCAL SUBDIVISION OR BUILDING ORDINANCES.



123 - 40

123 - 23

1"=200'

01/11/2012 JGD

CHANGES	
BLK	NEW/REV CUT
9	13-16 75 244
10	17-24 75 244
2	21-22 79 2230
11	23-25 82 1572
11	26-28 82 5718
23	29-30 84 3379
3	31-32 89 2353
7	35 836 97 1436
24-29	57-57 92 9
35	92-55 94 1799
62-55	92-55 112 5555
	BLK 112 5555

SAN DIEGO COUNTY ASSESSOR'S MAP BOOK 123 PG 40

MAP 12801 - CO OF SD TCT NO 4708 SEC 7 - T10S - R3W - W 1/2 OF NW 1/4 ROS 9532

W 1/4 COR. SEC. 7