

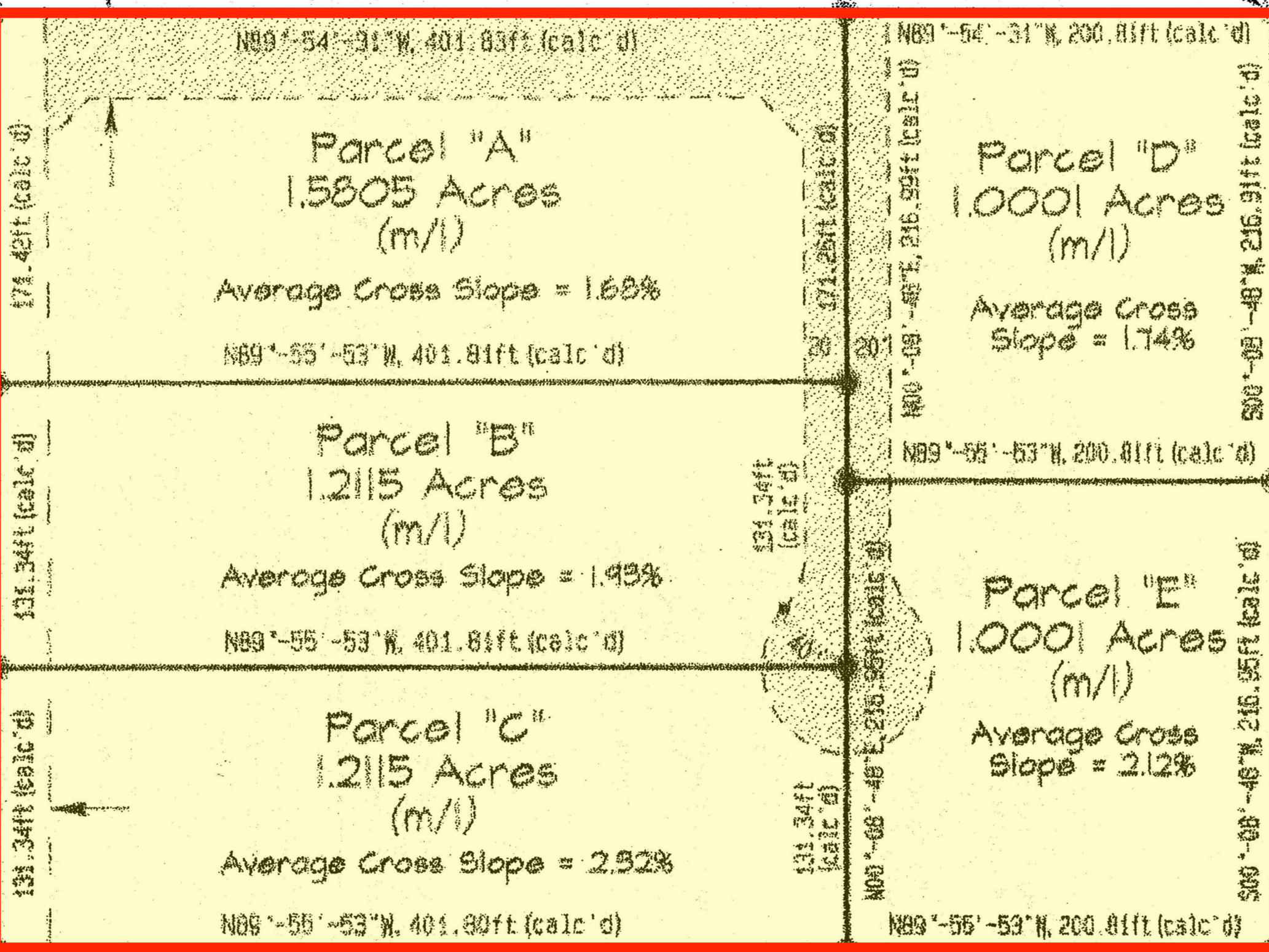
Exhibit #1

40' Ingress Egress & Utility Easement (atched area)

N89°-54'-31"W, 602.63ft (meas'd)

S00°-08'-41"W  
433.84ft (calc'd)  
(see Dkt. 12879  
Pg. 98847)

Aluminum capped rebar "RLS#10046"



N89°-54'-31"W, 401.83ft (calc'd)

Parcel "A"  
1.5805 Acres  
(m/l)

Average Cross Slope = 1.68%

N89°-55'-53"W, 401.81ft (calc'd)

Parcel "B"  
1.2115 Acres  
(m/l)

Average Cross Slope = 1.93%

N89°-55'-53"W, 401.81ft (calc'd)

Parcel "C"  
1.2115 Acres  
(m/l)

Average Cross Slope = 2.32%

N89°-55'-53"W, 401.80ft (calc'd)

N89°-54'-31"W, 200.81ft (calc'd)

Parcel "D"  
1.0001 Acres  
(m/l)

Average Cross Slope = 1.74%

N89°-55'-53"W, 200.81ft (calc'd)

Parcel "E"  
1.0001 Acres  
(m/l)

Average Cross Slope = 2.12%

N89°-55'-53"W, 200.81ft (calc'd)

N00°-08'-34"E, 434.10ft (meas'd)

25' Road and Utility Easement Per Dkt. 4986 Pg. 137 Dkt. 4890 Pg. 60

1/2" rebar w/tag stamped "RLS#10046"

N89°-55'-53"W, 602.61ft (meas'd)

1/2" rebar w/tag stamped "RLS#10046"

Aluminum capped rebar "RLS#10046"

S00°-08'-49"W, 433.85ft (meas'd)