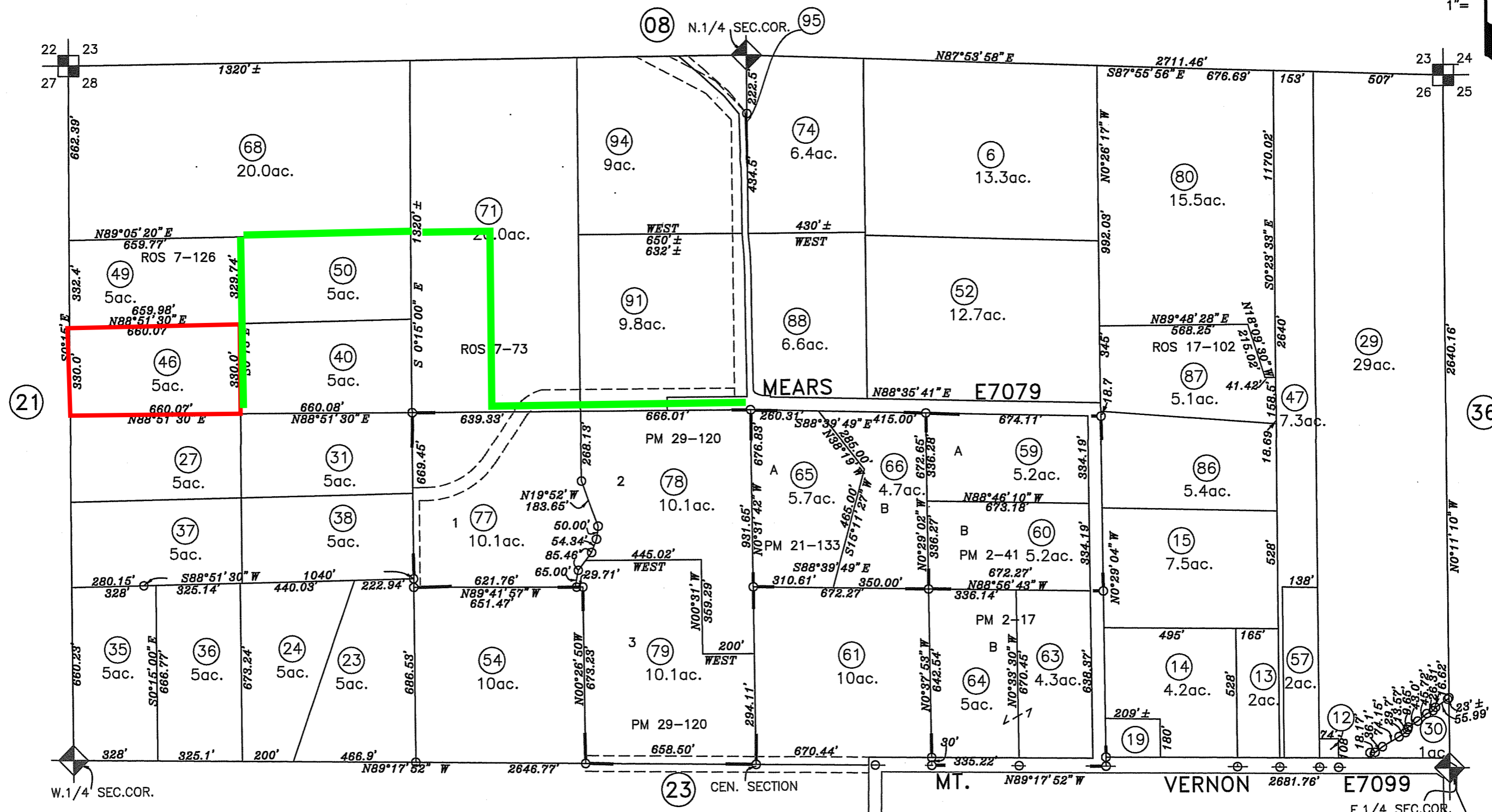


N. 1\2 SEC. 26, T.13N., R.7E., M.D.B. & M.

Parcel Map M.O.R. Bk. 2, Pgs. 17&41
Parcel M.O.R. Bk. 21, Pg. 133, P-74380
Parcel M.O.R. Bk. 29, Pg. 120, P-75530

Survey M.O.R. Bk. 5, Pg. 44
Survey M.O.R. Bk. 7, Pg. 73
Survey M.O.R. Bk. 7, Pg. 126
Survey M.O.R. Bk. 17, Pg. 102 No. 2477

1" = 400'



05-06-2014
04-24-2014
12-20-2005
11-17-2005
10-28-99
07-21-99 SKS
Page Redrawn per BaseMap Information.

NOTE
All distances on curved lines are chord measurements.

NOTE
This map was prepared for assessment purposes only, and is not intended to illustrate legal building sites or establish precedence over local ordinances. Official information concerning size or use of any parcel should be obtained from recorded documents and local governing agencies.

Assessor's Map Bk.26 Pg.22
County of Placer, Calif.
NOTE
Assessor's Block Numbers Shown in Ellipses.
Assessor's Parcel Numbers Shown in Circles.