

665-09

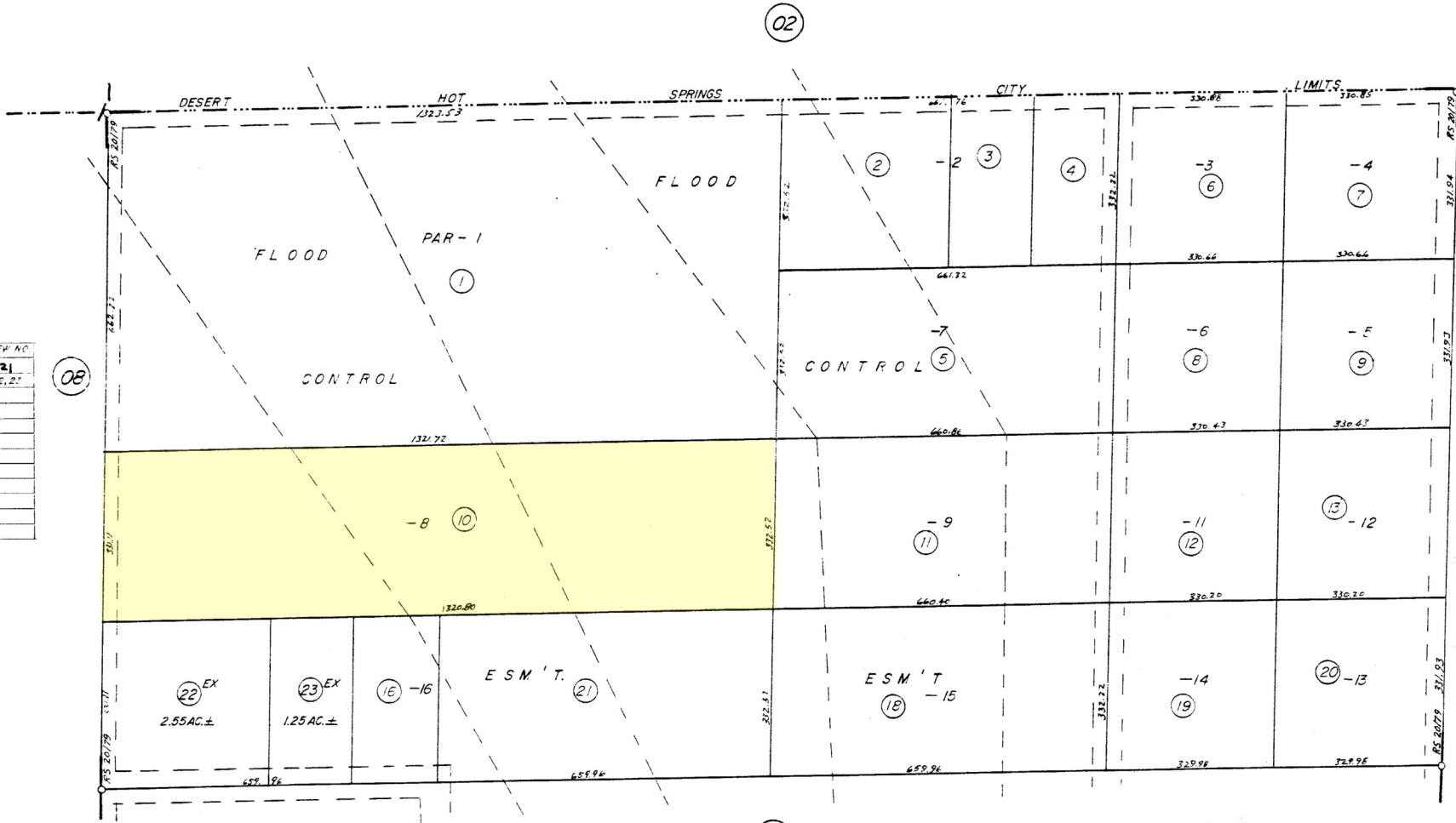
24-34-8

T. C. A 6133, 6140

N² SE⁴ SEC. 1 T.3S. R.4 E.



NOTE	OLD NO.	NEW NO.
21	80	21
22	800	22
23	800	23



08

02

BK. 656

10

R/S 20/79

MAR. 1968

ASSESSOR'S MAP BK. 665 PG 09 RIVERSIDE COUNTY, CALIF.