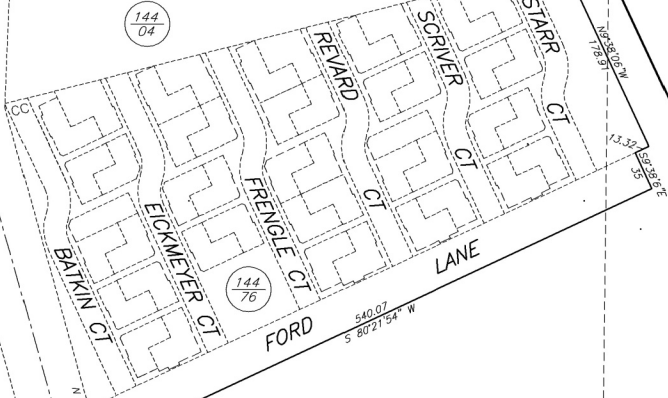


# COUNTY ASSESSOR'S PARCEL MAP

TAX RATE AREA 144-05  
8-015

Ptn. COTATI COTTAGES  
A PLANNED UNIT DEVELOPMENT  
REC. 03-19-03 IN BK. 646, MAPS, PGS. 5-13



160  
R/S 759/26

9

PARCEL A  
7.17 Ac.

159  
R/S 387/8-9  
R/S 603/30

46  
28

156

144  
03

REVISED  
12-3-04= LSL  
12-1-05= corr. LSL  
09-24-13=R/S BJ

5  
R/S 590/40  
2.51 Ac.

4  
R/S 188/18  
-R=20  
-53.07

Ptn. COTATI RANCHO NO. 7  
REC. 06-07-1893 IN BK. 10, MAPS, PG. 9

144  
11

Assessor's Map Bk. 144, Pg. 05  
Sonoma County, Calif. (ACAD)  
DSK/KEY 11-5-03=09 LSL

NOTE: Assessor's parcels do not necessarily constitute legal lots. To verify legal parcel status, check with the appropriate city or county community development or planning division.

NOTE: THIS MAP WAS PREPARED FOR ASSESSMENT PURPOSES ONLY. NO LIABILITY IS ASSUMED FOR THE ACCURACY OF THE DATA DELINEATED HEREON.



SCALE:  
1"=100'